

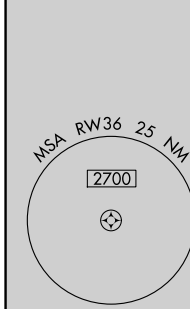
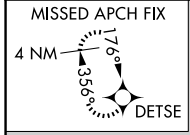
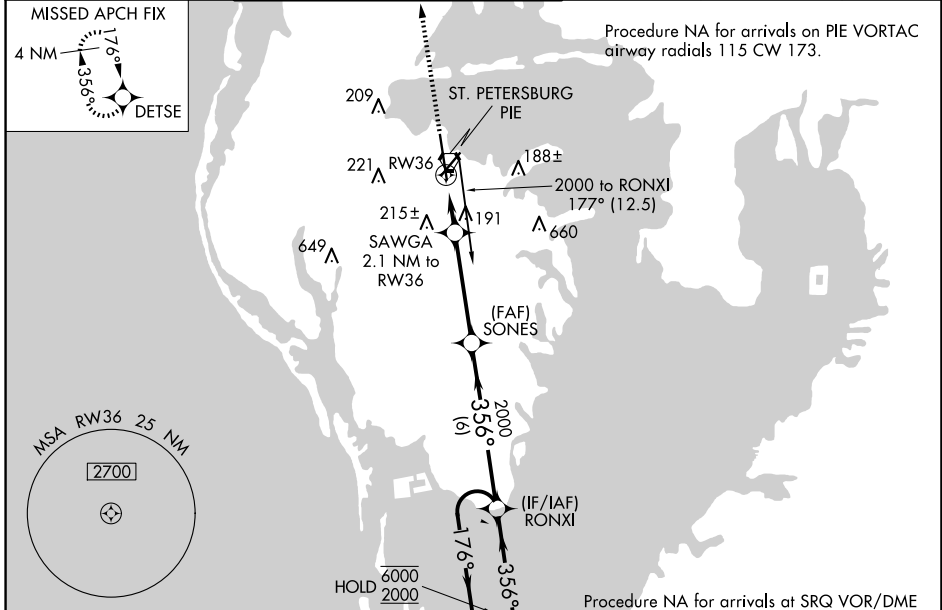
WAAS CH <b>65739</b> <b>W36A</b>	APP CRS <b>356°</b>	Rwy Idg TDZE <b>10</b> Apt Elev <b>11</b>	<b>8720</b>
--	------------------------	---	-------------

# RNAV (GPS) RWY 36

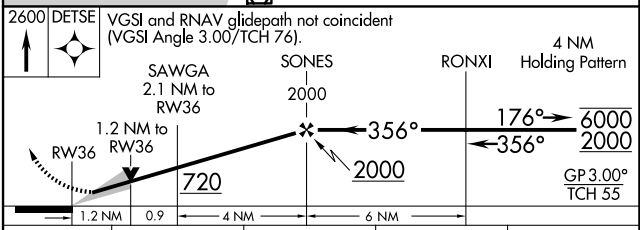
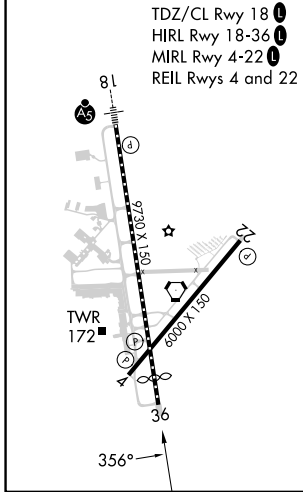
ST PETE-CLEARWATER INTL (PIE)

RNP APCH - GPS		<p><b>⚠</b> Circling to Rwy 22 NA at night. For uncompensated Baro-VNAV systems, LNAV/VNAV NA below 3°C or above 54°C.</p>		<p>MISSED APPROACH: Climb to 2600 direct DETSE and hold.</p>	
----------------	--	--	--	--	--

ATIS <b>134.5</b>	TAMPA APP CON <b>125.3 316.05</b>	ST PETERSBURG-CLEARWATER TOWER ★ <b>118.3 (CTAF) 0 257.8</b>	GND CON <b>121.9 348.6</b>	CLNC DEL <b>120.6 350.2</b>	UNICOM <b>122.95</b>
----------------------	--------------------------------------	---	-------------------------------	--------------------------------	-------------------------



ELEV 11	<b>D</b>	TDZE 10
---------	----------	---------



CATEGORY	A	B	C	D
LPV DA	210/40 200 (200-¾)			
LNAV/VNAV DA	315/45 305 (400-⅞)			
LNAV MDA	460/55	450 (500-1)	460-1⅓	450 (500-1⅓)
<b>C</b> CIRCLING	520-1	509 (600-1)	600-1½ 589 (600-1½)	620-2 609 (700-2)

SE-3, 23 JAN 2025 to 20 FEB 2025

SE-3, 23 JAN 2025 to 20 FEB 2025