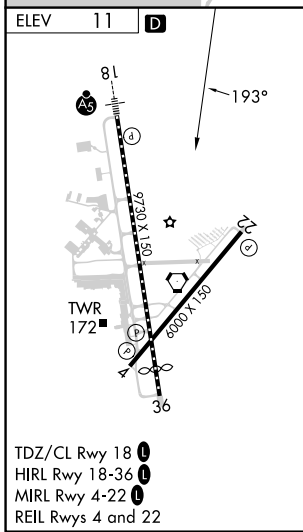
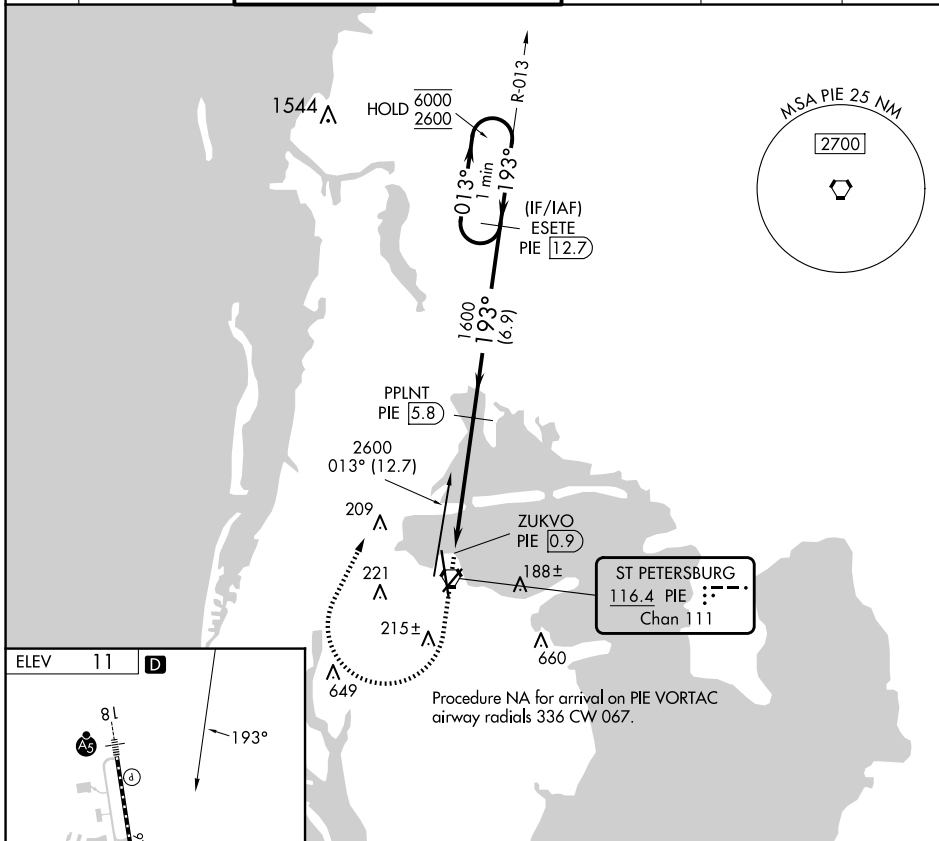


VORTAC PIE 116.4 Chan 111	APP CRS 193°	Rwy Idg TDZE Apt Elev	N/A N/A 11
---	------------------------	-----------------------------	-------------------------

VOR-B
ST PETE-CLEARWATER INTL (PIE)

DME required.		MISSED APPROACH: Climb to 700 then climbing right turn to 2600 on heading 030° and PIE VORTAC R-013 to ESETE/PIE 12.7 DME and hold.			
ATIS 134.5	TAMPA APP CON 125.3 316.05	ST PETERSBURG-CLEARWATER TOWER ★ 118.3 (CTAF) 0 257.8	GND CON 121.9 348.6	CLNC DEL 120.6 350.2	UNICOM 122.95



700 ↑ hdg 030° 2600 PIE R-013 ESETE PIE 12.7 One Minute Holding Pattern	PPLNT PIE 5.8 1600 4.9 NM		013° → 6000 ← 193° 2600 6.9 NM	
	ZUKVO PIE 0.9 PIE VORTAC		ESETE PIE 12.7	
CATEGORY	A	B	C	D
CIRCLING	520-1	509 (600-1)	600-1½ 589 (600-1½)	620-2 609 (700-2)

SE-3, 23 JAN 2025 to 20 FEB 2025

SE-3, 23 JAN 2025 to 20 FEB 2025