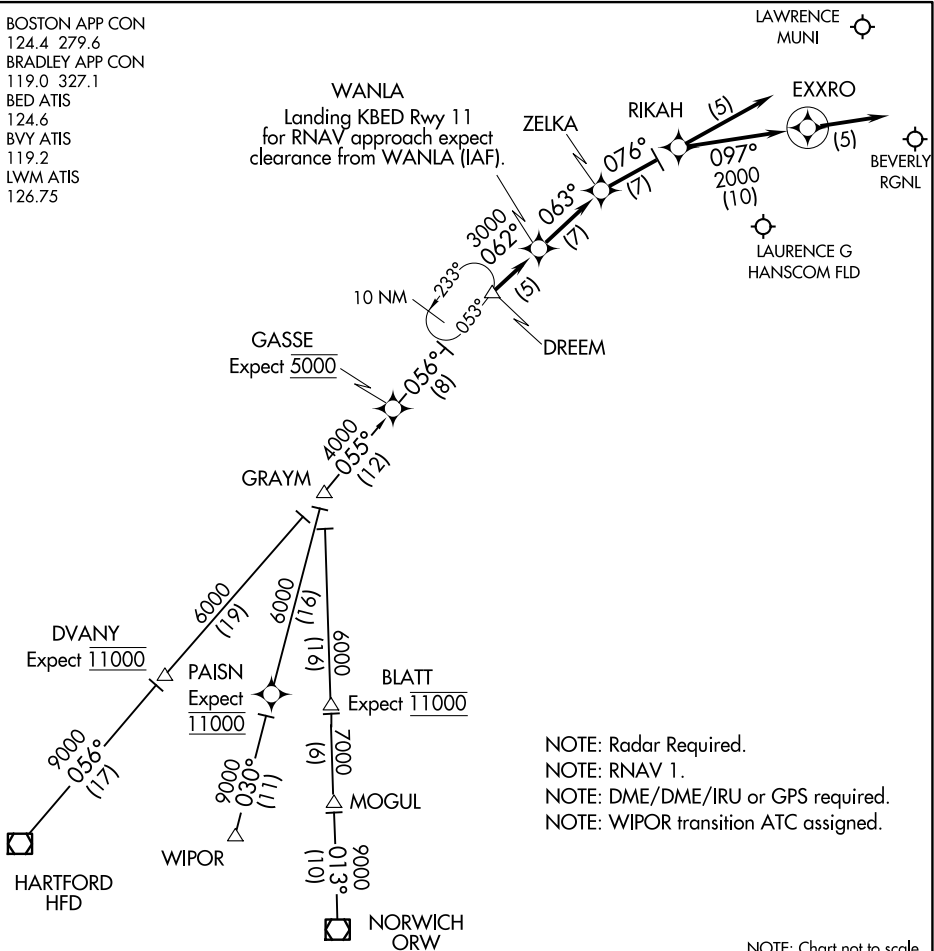


DREEM TWO ARRIVAL (RNAV)

BEDFORD, MASSACHUSETTS

BOSTON APP CON
124.4 279.6
BRADLEY APP CON
119.0 327.1
BED ATIS
124.6
BVY ATIS
119.2
LWM ATIS
126.75

WANLA
Landing KBED Rwy 11
for RNAV approach expect
clearance from WANLA (IAF).



NOTE: Radar Required.
NOTE: RNAV 1.
NOTE: DME/DME/IRU or GPS required.
NOTE: WIPOR transition ATC assigned.

NOTE: Chart not to scale.

HARTFORD TRANSITION (HFD.DREEM2):
NORWICH TRANSITION (ORW.DREEM2):
WIPOR TRANSITION (WIPOR.DREEM2):

LANDING BVY ALL RWYS, BED RWY 23 & 29: From DREEM on track 062° to WANLA , then on track 063° to ZELKA, then on track 076° to RIKAH, then on track 097° to EXXRO, then on track 097°. Expect radar vectors to destination airport and final approach course.

LANDING BED RWY 11: From DREEM on track 062° to WANLA, then on track 063° to ZELKA. Expect ILS approach.

LANDING LWM ALL RWYS: From DREEM on track 062° to WANLA, then on track 063° to ZELKA, then on track 076° to RIKAH, then on track 076°, expect radar vectors to final approach course.

DREEM TWO ARRIVAL (RNAV)

BEDFORD, MASSACHUSETTS