

LOC/DME I-ULJ <b>111.15</b> Chan <b>48(Y)</b>	APP CRS <b>293°</b>	Rwy Idg <b>7011</b> TDZE <b>128</b> Apt Elev <b>132</b>
---	------------------------	---

# ILS or LOC RWY 29

LAURENCE G HANSCOM FLD (BED)

RADAR required for procedure entry. DME or RADAR required.

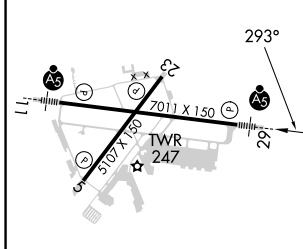
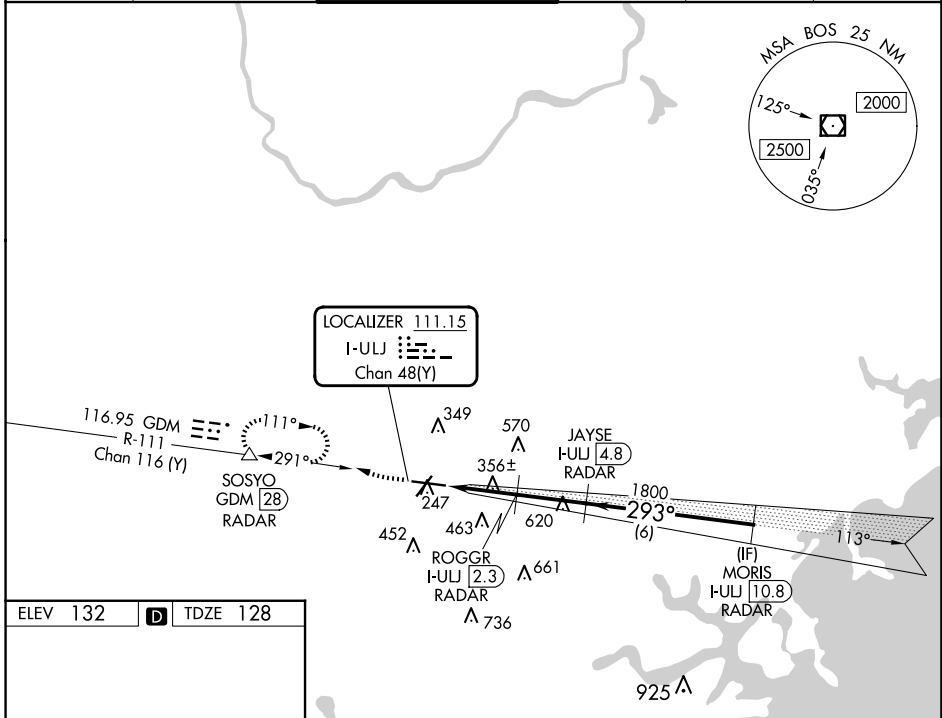
For inop ALS, increase S-LOC 29 Cats C and D to 1½ SM.

MALSR

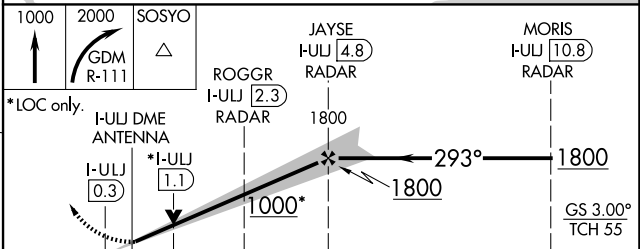


MISSED APPROACH: Climb to 1000 then climbing right turn to 2000 on GDM VOR/DME R-111 to SOSYO/GDM 28 DME/RADAR and hold.

ATIS <b>124.6</b>	BOSTON APP CON <b>124.4 279.6</b>	HANSCOM TOWER ★ <b>118.5 (CTAF) 257.2</b>	GND CON <b>121.7</b>	CLNC DEL <b>121.85</b>	UNICOM <b>122.95</b>
----------------------	--------------------------------------	--	-------------------------	---------------------------	-------------------------



ELEV 132	D	TDZE 128			
MIRL Rwy 5-23					
HIRL Rwy 11-29					
REIL Rwys 5 and 23					
FAF to MAP 5.1 NM					
Knots	60	90	120	150	180
Min:Sec	5:06	3:24	2:33	2:02	1:42



CATEGORY	A	B	C	D
S-ILS 29	328-½ 200 (200-½)			
S-LOC 29	620-½ 492 (500-½)		620-1 492 (500-1)	
CIRCLING	720-1 588 (600-1)		880-2¼ 920-2½ 748 (800-2¼) 788 (800-2½)	

NE-1, 23 JAN 2025 to 20 FEB 2025

NE-1, 23 JAN 2025 to 20 FEB 2025