

APP CRS	Rwy Idg	5107
233°	TDZE	128
	Apt Elev	132

RNAV (GPS) RWY 23

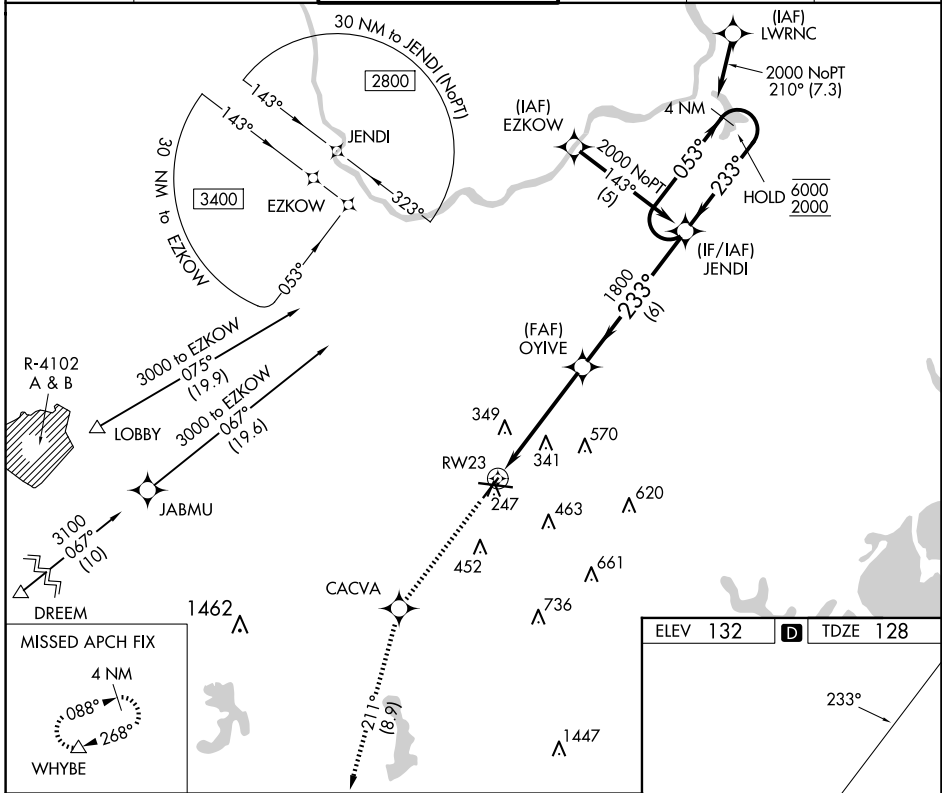
LAURENCE G HANSCOM FLD (BED)

RNP APCH - GPS.

⚠ Rwy 23 helicopter visibility reduction below 3/4 SM NA.

MISSED APPROACH: Climb to 3000 direct CACVA and on track 211° to WHYBE and hold.

ATIS 124.6	BOSTON APP CON 124.4 279.6	HANSCOM TOWER ★ 118.5 (CTAF) 257.2	GND CON 121.7	CLNC DEL 121.85	UNICOM 122.95
----------------------	--------------------------------------	--	-------------------------	---------------------------	-------------------------



3000	CACVA	tr 211°	WHYBE	VGSI and descent angles not coincident (VGSI Angle 3.20/TCH 55).	4 NM Holding Pattern
↑	✧		△		
RW23		1.6 NM to RW23	OYIVE	053° → 6000	← 233° 2000
		3.04° TCH 53	1800		
		1.6 NM	3.5 NM	6 NM	

ELEV 132	D	TDZE 128
----------	----------	----------

The inset chart provides a detailed view of the RWY 23 holding pattern and missed approach. It shows the holding pattern at JENDI (2000 ft) with a 233° inbound and 053° outbound. The missed approach procedure is shown as a climb to 3000 ft, track 211° to WHYBE, and hold. The chart also shows the runway layout, taxiway, and various navigation aids.

CATEGORY	A	B	C	D
LNAV MDA	640-1	512 (600-1)	640-1 3/8	512 (600-1 3/8)
C CIRCLING	740-1 608 (700-1)	800-1 668 (700-1)	880-2 1/4 748 (800-2 1/4)	920-2 1/2 788 (800-2 1/2)

MIRL Rwy 5-23 **!**
HIRL Rwy 11-29 **!**
REIL Rws 5 and 23 **!**

NE-1, 23 JAN 2025 to 20 FEB 2025

NE-1, 23 JAN 2025 to 20 FEB 2025