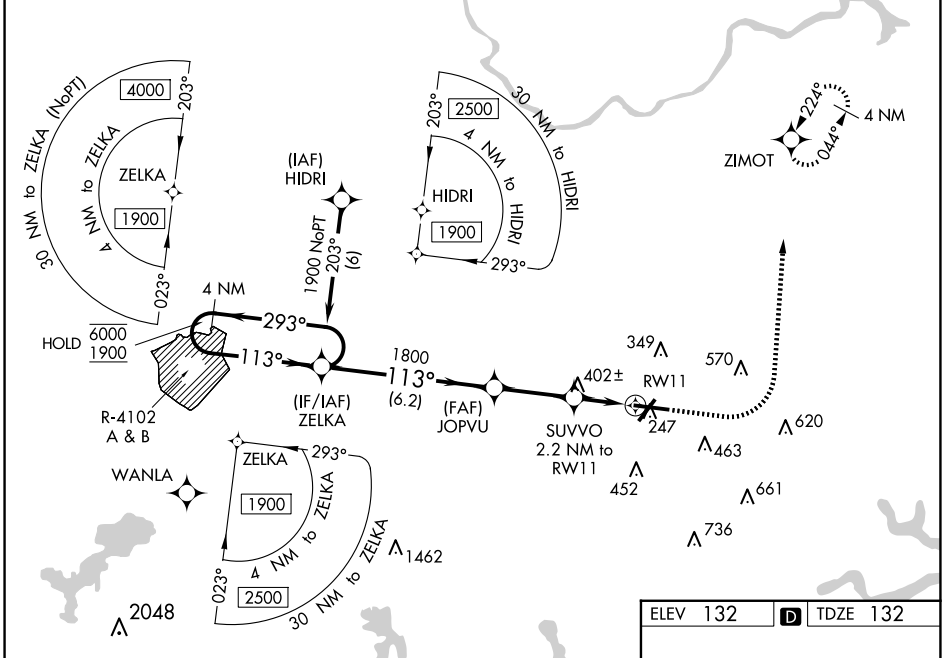


WAAS CH 87000 W11A	APP CRS 113°	Rwy Idg TDZE 132 Apt Elev 132	7011
--	------------------------	---	-------------

RNAV (GPS) Z RWY 11

LAURENCE G HANSCOM FLD (BED)

RNP APCH-GPS.			MALSR		
<p>▼ For uncompensated Baro-VNAV systems, LNAV/VNAV NA below -19° C or above 54° C.</p> <p>▲ For inop ALS, increase all LNAV/VNAV Cats visibility to RVR 5500.</p>			<p>MISSED APPROACH: Climb to 1000 then climbing left turn to 2000 direct ZIMOT and hold.</p>		
ATIS 124.6	BOSTON APP CON 124.4 279.6	HANSCOM TOWER ★ 118.5 (CTAF) 0 257.2	GND CON 121.7	CLNC DEL 121.85	UNICOM 122.95



NE-1, 23 JAN 2025 to 20 FEB 2025

NE-1, 23 JAN 2025 to 20 FEB 2025

VGSi and RNAV glidepath not coincident (VGSi Angle 3.00/TCH 67).		1000	2000	ZIMOT
4 NM Holding Pattern				
6000	← 293°	ZELKA	JOPVU	SUVVO
1900	→ 113°		1800	2.2 NM to RW11
GP 3.00° TCH 50			880	1.5 NM to RW11
		6.2 NM	2.9 NM	0.7 NM
CATEGORY	A	B	C	D
LPV DA		384/24	252 (300-½)	
LNAV/VNAV DA		474/30	342 (400-¾)	
LNAV MDA	660/24	528 (600-½)	660/55	528 (600-1)
CIRCLING	720-1	588 (600-1)	880-2¼ 748 (800-2¼)	920-2½ 788 (800-2½)

