

LOC/DME I-VXO 110.55 Chan 42 (Y)	APP CRS 133°	Rwy Idg TDZE 344 Apt Elev 344
---	------------------------	---

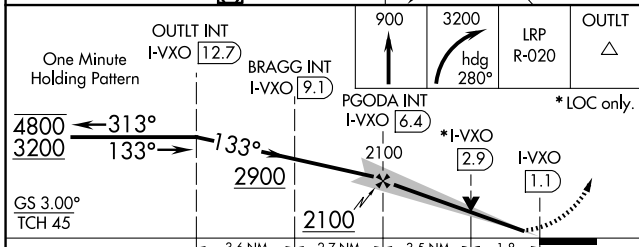
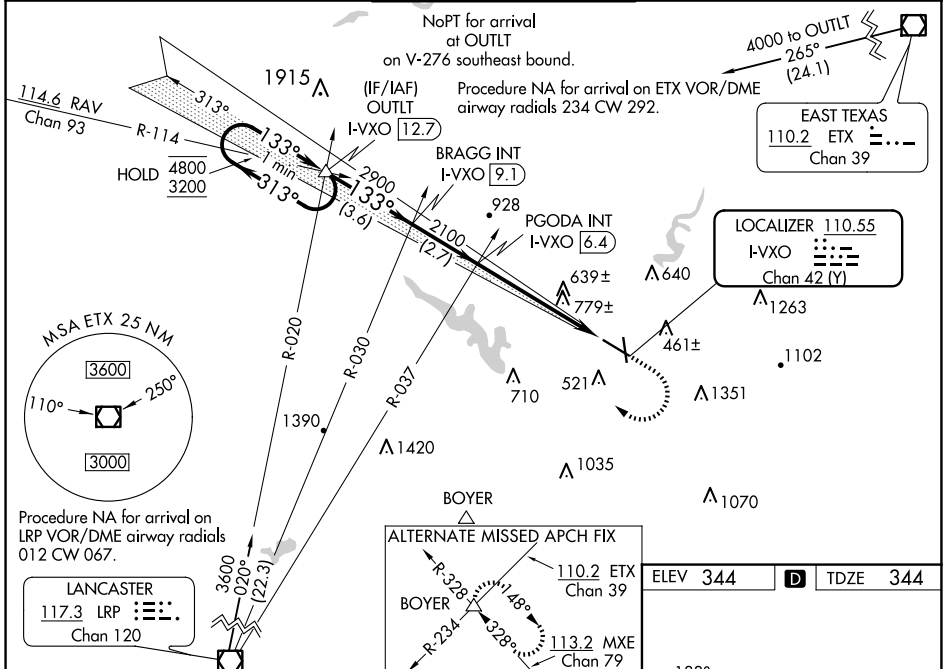
ILS or LOC RWY 13

READING RGNL/CARL A SPAATZ FLD (RDG)

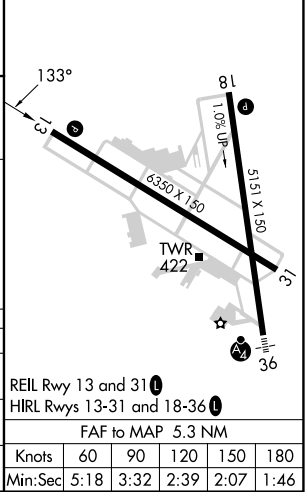
⚠ Circling Rwy 18, 31 NA at night. Helicopter visibility reduction below 3/4 SM NA. VDP NA when using Harrisburg Intl altimeter setting. When local altimeter setting not received, use Harrisburg Intl altimeter setting and increase S-ILS 13 Cat A DA to 637 feet and visibility 1/2 SM, Cat B DA to 652 feet and visibility 1/2 SM, Cat C and D DA to 687 feet and visibility 1/4 SM, and increase all MDA 100 feet and S-LOC 13 Cat C visibility 1/4 SM, Circling Cats B and C visibility 1/4 SM.

MISSED APPROACH: Climb to 900 then climbing right turn to 3200 on heading 280° and LRP VOR/DME R-020 to OUTLT INT/I-VXO 12.7 DME and hold.

ATIS 127.1	READING APP CON ★ 125.15 257.9	READING TOWER ★ 119.9 (CTAF) 288.3	GND CON 121.9	UNICOM 122.95
----------------------	--	--	-------------------------	-------------------------



ELEV 344	D	TDZE 344
----------	----------	----------



CATEGORY	A	B	C	D
S-ILS 13	544-3/4 200 (200-3/4)	559-3/4 215 (300-3/4)	594-3/4	250 (300-3/4)
S-LOC 13	980-1 636 (700-1)	980-1 636 (700-1)	980-2 636 (700-2)	980-2 636 (700-2)
CIRCLING	1020-1 676 (700-1)	1080-1 736 (800-1)	1280-2 3/4 936 (1000-2 3/4)	1660-3 1316 (1400-3)

REIL Rwy 13 and 31
HIRL Rws 13-31 and 18-36
FAF to MAP 5.3 NM

Knots	60	90	120	150	180
Min:Sec	5:18	3:32	2:39	2:07	1:46

NE-4, 23 JAN 2025 to 20 FEB 2025

NE-4, 23 JAN 2025 to 20 FEB 2025