

# RNAV (GPS) RWY 18

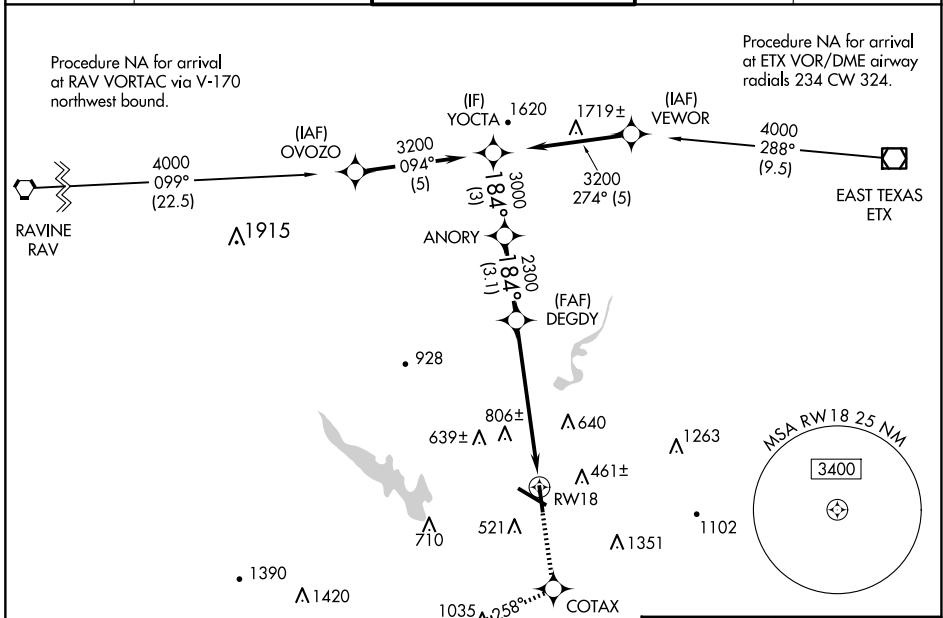
READING RGNL/CARL A SPAATZ FLD (RDG)

APP CRS	Rwy Idg	<b>5151</b>
<b>184°</b>	TDZE	<b>319</b>
	Apt Elev	<b>344</b>

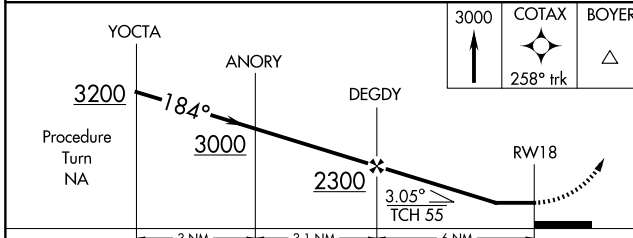
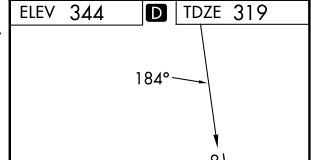
**⚠** Night landing: Rwy 18, 31 NA. DME/DME RNP-0.3 NA. Helicopter visibility reduction below 1 SM NA. When local altimeter setting not received, use Harrisburg Intl altimeter setting and increase all MDAs 100 feet, and increase LNAV Cat B visibility ¼ SM and Cat C and D visibility ½ SM, and increase Circling Cats B and C visibility ¼ SM.

**MISSED APPROACH:** Climb to 3000 direct COTAX and via 258° track to BOYER and hold, continue climb-in-hold to 3000.

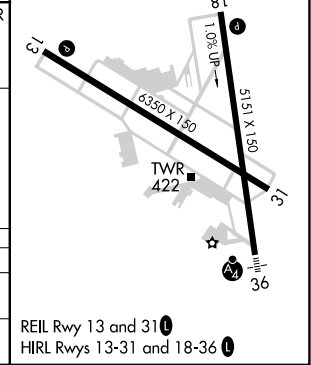
ATIS	READING APP CON *	READING TOWER *	GND CON	UNICOM
<b>127.1</b>	<b>125.15 257.9</b>	<b>119.9 (CTAF) 0 288.3</b>	<b>121.9</b>	<b>122.95</b>



ELEV 344	<b>D</b> TDZE 319
----------	-------------------



CATEGORY	A	B	C	D
LNAV MDA	980-1	661 (700-1)	980-1¾ 661 (700-1¾)	980-2 661 (700-2)
CIRCLING	1020-1 676 (700-1)	1080-1 736 (800-1)	1280-2¾ 936 (1000-2¾)	1660-3 1316 (1400-3)



NE-4, 23 JAN 2025 to 20 FEB 2025

NE-4, 23 JAN 2025 to 20 FEB 2025