


VOR/DME CNG 113.1 Chan 78	APP CRS 042°	Rwy Idg 6500 TDZE 411 Apt Elev 411
---	------------------------	---

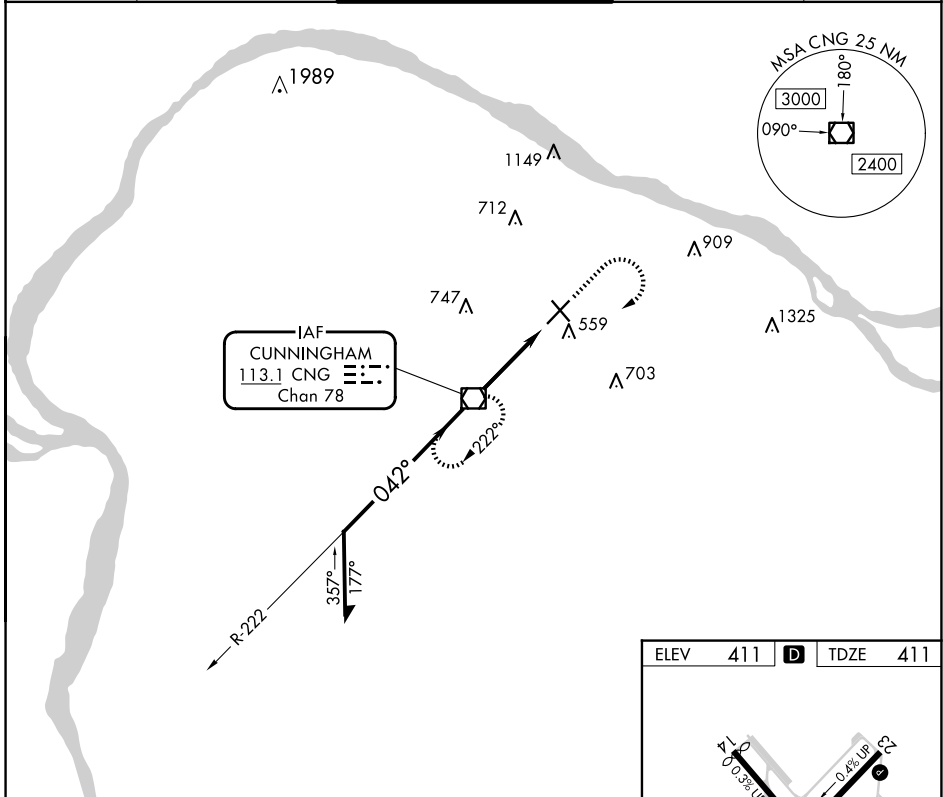
VOR RWY 5

BARKLEY RGNL (PAH)

▼ When local altimeter setting not received, use Mayfield altimeter setting and increase all MDAs 80 feet, and increase S-5 Cat C and D visibility ¼ SM and increase Circling Cat D visibility ¼ SM. VDP NA when using Mayfield altimeter setting.

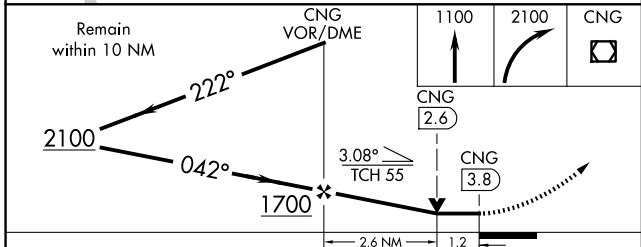
MALS  MISSED APPROACH: Climb to 1100 then climbing right turn to 2100 direct CNG VOR/DME and hold.

ASOS 118.375	MEMPHIS CENTER 133.65 292.15	PADUCAH TOWER ★ 119.6 (CTAF) 306.9	GND CON 121.7 306.9	UNICOM 122.95
------------------------	--	---	-------------------------------	-------------------------

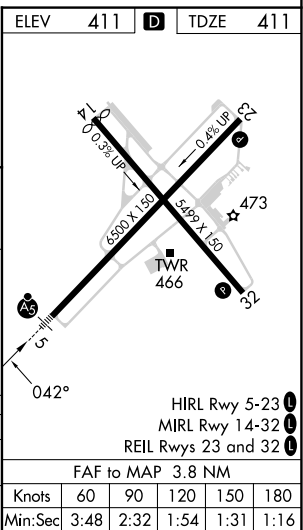


SE-1, 23 JAN 2025 to 20 FEB 2025

SE-1, 23 JAN 2025 to 20 FEB 2025



CATEGORY	A	B	C	D
S-5	860-½	449 (500-½)	860-¾ 449 (500-¾)	860-1 449 (500-1)
C CIRCLING	900-1	489 (500-1)	920-1½ 509 (600-1½)	1100-2¼ 689 (700-2¼)



FAF to MAP 3.8 NM	Knots	60	90	120	150	180
	Min:Sec	3:48	2:32	1:54	1:31	1:16