

# HI-TACAN Y RWY 22

VORTAC HRV <b>114.1</b> Chan <b>88</b>	APCH CRS <b>237°</b>	Rwy ldg TDZE Arprt Elev <b>10,000</b> <b>-1</b> <b>2</b>
--	-------------------------	---

AL-630 [USN]

NEW ORLEANS NAS JRB (ALVIN CALLENDER FLD) (KNBG)

RNAV or ATC RADAR monitoring required.

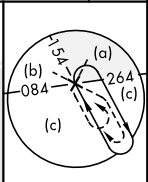
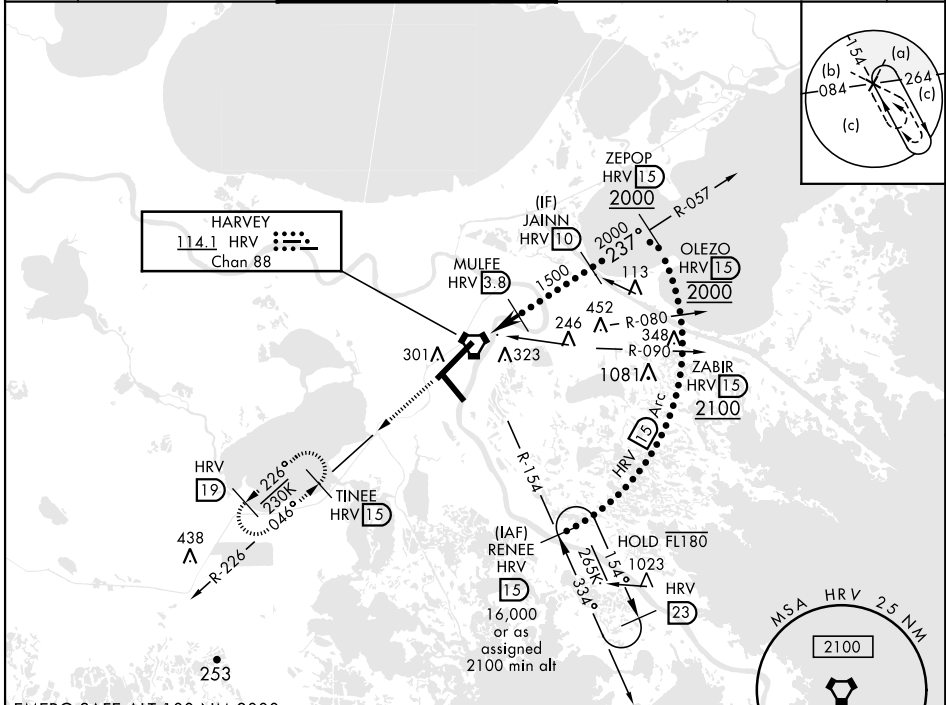
ALSF-1



MISSED APPROACH: Climb to 2000 via R-226 to TINEE and hold.

\* When ALS inop, increase vis CAT CDE vis to 1½ miles.  
\*\* Circling NA for CAT E NW of Rwy 4-22.

ATIS ★ <b>279.55</b>	APP CON <b>123.85 256.9</b>	NAVY NEW ORLEANS TOWER ★ <b>123.8 340.2</b> (CTAF)	GND CON <b>121.6 270.35</b>	CLNC DEL <b>128.35 263.0</b>	ASR/ PAR
-------------------------	--------------------------------	---	--------------------------------	---------------------------------	----------

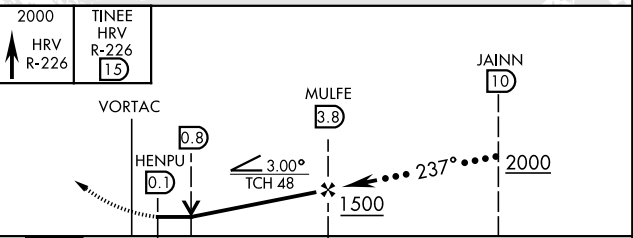
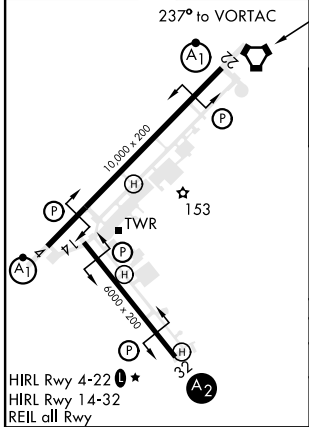


SC-4, 23 JAN 2025 to 20 FEB 2025

SC-4, 23 JAN 2025 to 20 FEB 2025

EMERG SAFE ALT 100 NM 3000

ELEV 2	TDZE -1
--------	---------



CATEGORY	C	D	E
S-22 *	540-1	540 (600-1)	
CIRCLING **	640-1¼ 638 (700-1¾)	640-2 638 (700-2)	640-2¼ 638 (700-2¼)

# HI-TACAN Y RWY 22