

HI-TACAN Y RWY 4

VORTAC HRV 114.1 Chan 88	APCH CRS 046°	Rwy ldg 10,000 TDZE Arprt Elev -2
--	-------------------------	---

AL-630 [USN]

NEW ORLEANS NAS JRB (ALVIN CALLENDER FLD) (KNBG)

RNAV or ATC RADAR monitoring required.

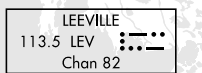
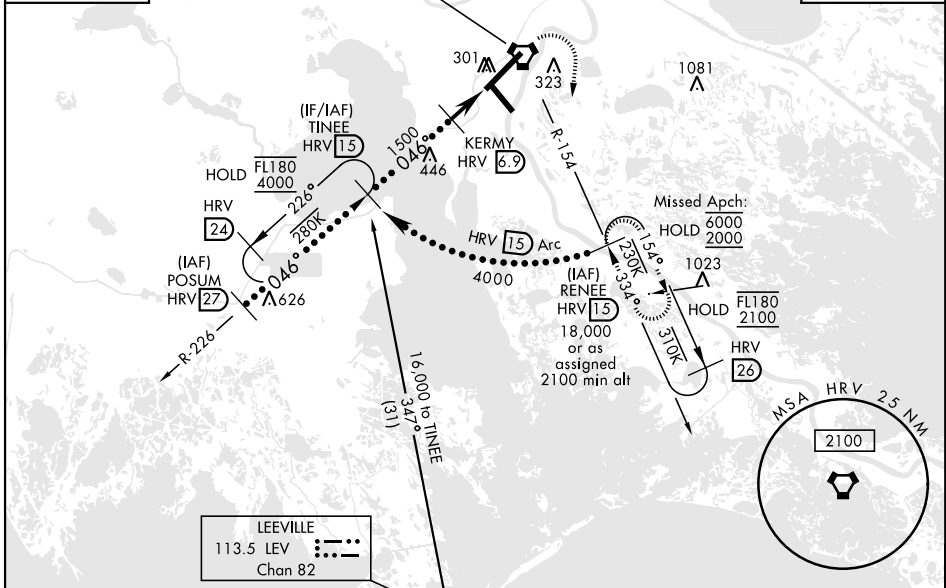
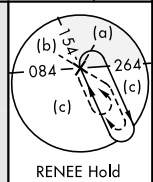
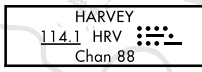
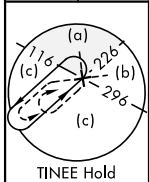
ALSF-1

MISSED APPROACH: Execute climbing right turn to 2100, intercept HRV VORTAC R-154 to RENEE. Cross 10 DME at 2000. Hold at RENEE.

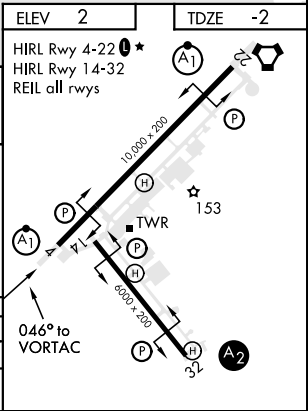
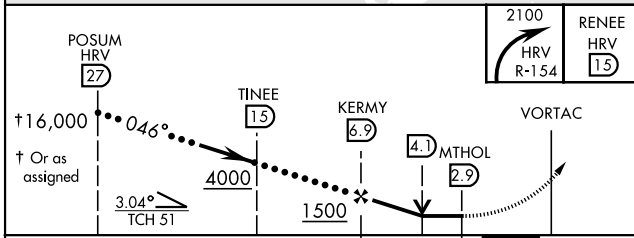
* When ALS inop, increase CAT CDE vis to 1¾ miles.
** Circling NA for CAT E NW of Rwy 4-22.



ATIS ★ 279.55	APP CON 123.85 256.9	NAVY NEW ORLEANS TOWER ★ 0 123.8 340.2 (CTAF)	GND CON 121.6 270.35	CLNC DEL 128.35 263.0	ASR/ PAR
-------------------------	--------------------------------	---	--------------------------------	---------------------------------	-------------



EMERG SAFE ALT 100 NM 3000



CATEGORY	C	D	E
S-4 *	600-1¾	602	(600-1¾)
CIRCLING **	640-1¾ 638 (700-1¾)	640-2 638 (700-2)	640-2¼ 638 (700-2¼)

NEW ORLEANS, LOUISIANA 29°50'N-90°02'W NEW ORLEANS NAS JRB (ALVIN CALLENDER FLD) (KNBG)

Orig 04NOV21

HI-TACAN Y RWY 4

SC-4, 23 JAN 2025 to 20 FEB 2025

SC-4, 23 JAN 2025 to 20 FEB 2025