

NEW ORLEANS, LOUISIANA

RNAV (GPS) RWY 14

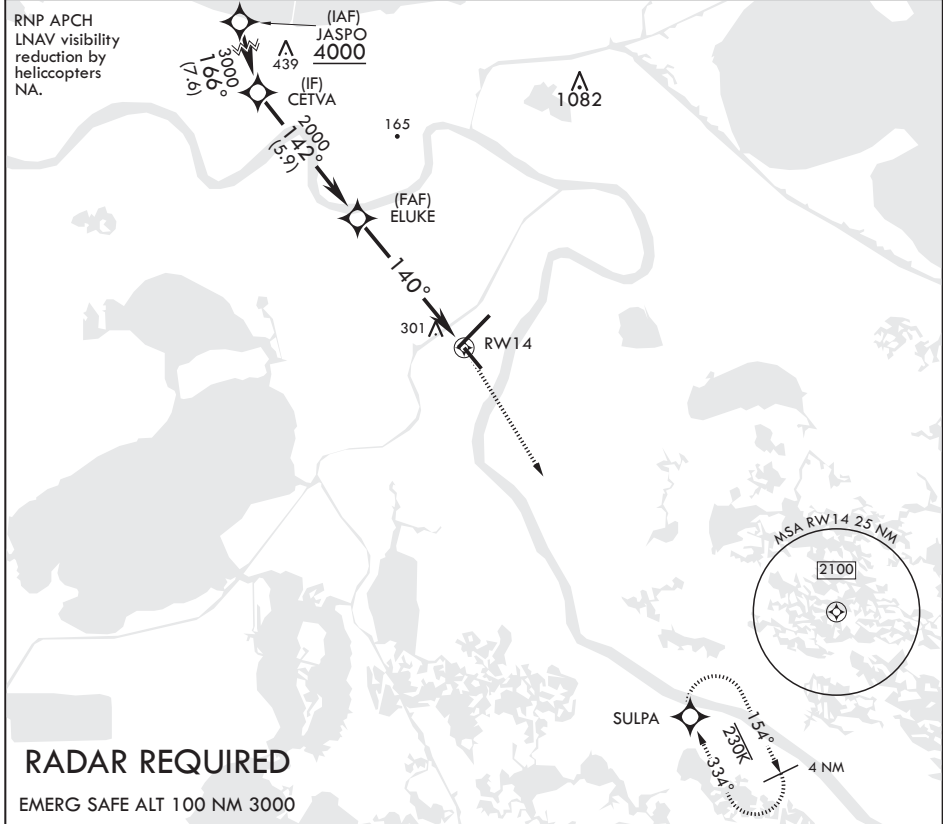
APCH CRS	Rwy Idg	6000
140°	TDZE	2
	Arprt Elev	2

AL-630 (USN)

NEW ORLEANS NAS JRB (ALVIN CALLENDER FLD) (KNBG)

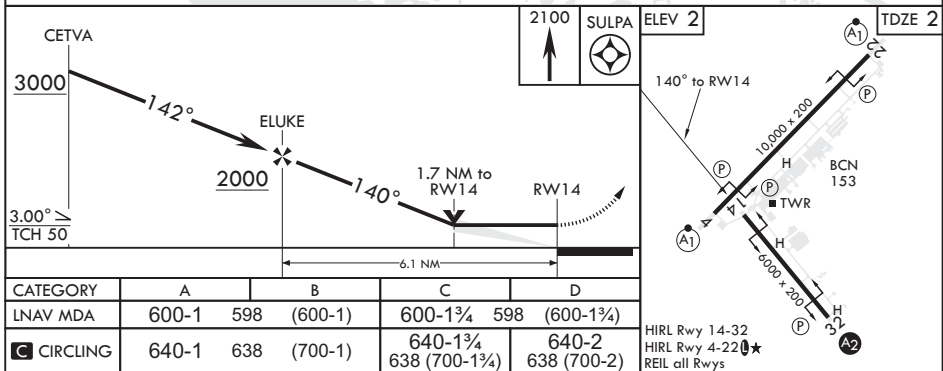
		MISSED APPROACH: Climbing right turn to 2100 direct SULPA and hold.			
--	--	---	--	--	--

ATIS★	APP CON/DEP CON	NAVY NEW ORLEANS TOWER★	GND CON	CLNC DEL	ASR/PAR
279.55	123.85 256.9	123.8 0★ 340.2 (CTAF)	121.6 270.35	128.35 263.0	



RADAR REQUIRED

EMERG SAFE ALT 100 NM 3000



CATEGORY	A		B		C		D	
LNAV MDA	600-1	598	(600-1)		600-1¾	598	(600-1¾)	
CIRCLING	640-1	638	(700-1)		640-1¾	638	(700-1¾)	

HIRL Rwy 14-32
 HIRL Rwy 4-22 0★
 REIL all Rwys

NEW ORLEANS, LOUISIANA

29°50'N - 90°02'W NEW ORLEANS NAS JRB (ALVIN CALLENDER FLD) (KNBG)

Amdt 2 04NOV21

RNAV (GPS) RWY 14

SC-4, 23 JAN 2025 to 20 FEB 2025

SC-4, 23 JAN 2025 to 20 FEB 2025