

NEW ORLEANS, LOUISIANA

RNAV (GPS) RWY 22

AL-630 (USN)

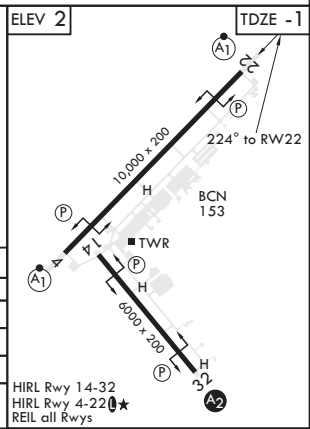
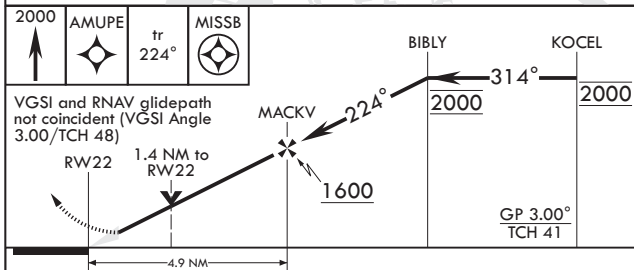
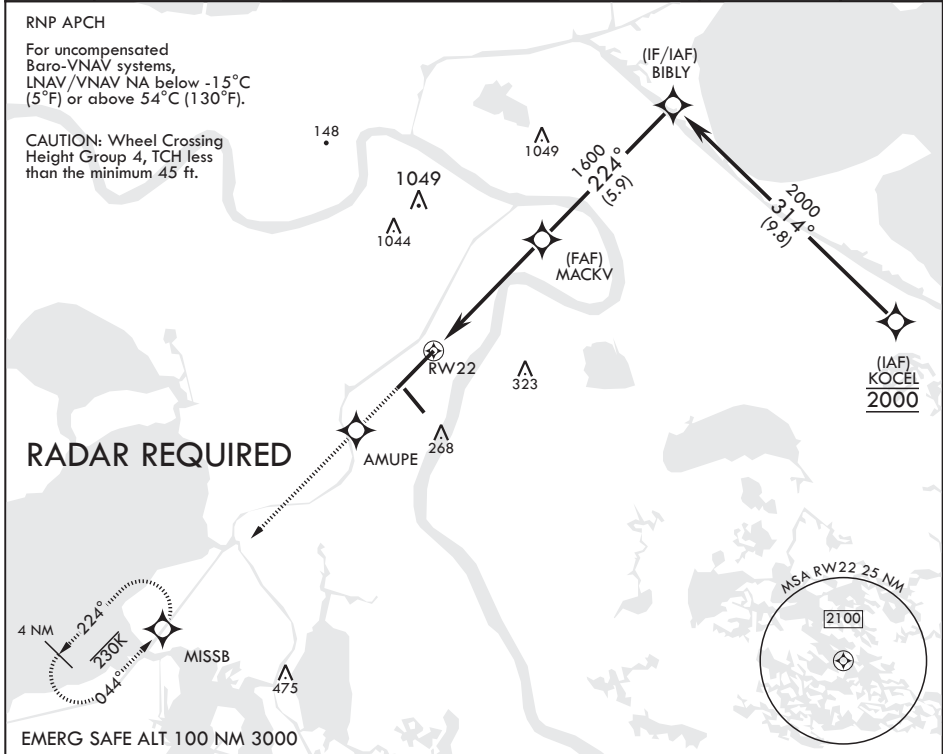
NEW ORLEANS NAS JRB (ALVIN CALLENDER FLD) (KNBG)

WAAS CH 60141 W22A	APCH CRS 224°	Rwy ldg TDZE Arprt Elev	10,000 -1 2
---------------------------------	-------------------------	-------------------------------	--------------------------

* When ALS inop, increase CAT ABCD vis to 3/4 mile.
 ** When ALS inop, increase CAT ABCD vis to 1 mile.
 *** When ALS inop, increase CAT AB vis to 1 mile; CAT CD vis to 1 3/8 miles.

ALSF-1 MISSED APPROACH: Climb to 2000 direct AMUPE track 224° to MISSB and hold.

ATIS* 279.55	APP CON/DEP CON 123.85 256.9	NAVY NEW ORLEANS TOWER* 123.8 0* 340.2 (CTAF)	GND CON 121.6 270.35	CLNC DEL 128.35 263.0	ASR/PAR
------------------------	--	---	--------------------------------	---------------------------------	---------



CATEGORY	A	B	C	D
LPV DA*	200-1/2	200	(200-1/2)	
LNAV/VNAV DA**	378-5/8	378	(400-5/8)	
LNAV MDA***	480-1/2 480 (500-1/2)	480-1 480 (500-1)	480-1 480 (500-1)	
CIRCLING	640-1 638 (700-1)	640-1 3/4 638 (700-1 3/4)	640-2 638 (700-2)	

HIRL Rwy 14-32
 HIRL Rwy 4-22 **0***
 REIL all Rwys

NEW ORLEANS, LOUISIANA
Amdt 3 04NOV21

29°50'N - 90°02'W NEW ORLEANS NAS JRB (ALVIN CALLENDER FLD) (KNBG)

RNAV (GPS) RWY 22

SC-4, 23 JAN 2025 to 20 FEB 2025

SC-4, 23 JAN 2025 to 20 FEB 2025