

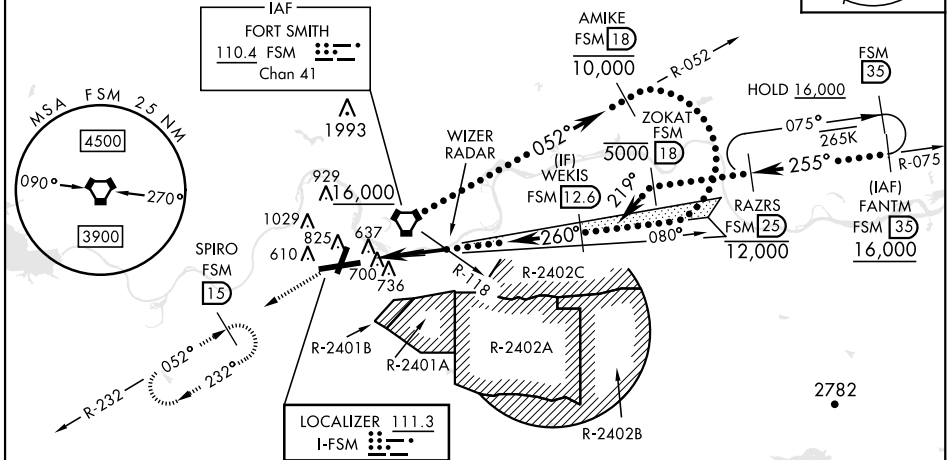
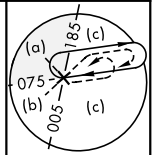
# HI-ILS Y or LOC Y RWY 26

LOC I-FSM <b>111.3</b>	APCH CRS <b>260°</b>	Rwy ldg TDZE Arprt Elev <b>9318</b> <b>448</b> <b>469</b>	[USAF] FORT SMITH RGNL (EBBING FLD ANGB) (KFSM)
DME required			MALSR
<p>▼ * When ALS inop, increase CAT E RVR to 40.                  ** When ALS inop, increase CAT CDE vis to 1 1/8 miles.                  ▲ NA when control tower closed.</p>			MISSED APPROACH: Climb to 1400 then climbing left turn to 4000 on heading 224° and FSM VORTAC R-232 to SPIRO/FSM (15 DME) and hold. Continue climb in hold to 4000.

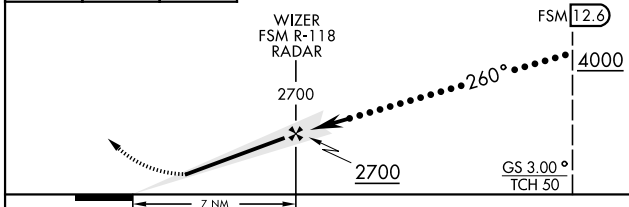
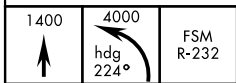
ATIS <b>124.775</b>	RAZORBACK APP CON * <b>120.9 343.75</b>	TOWER * <b>118.3 (CTAF) 0 323.175</b>	GND CON <b>121.9 275.8</b>	CLNC DEL <b>133.85 278.3</b>
------------------------	--	--	-------------------------------	---------------------------------

\*\*\* Circling not authorized for CAT E NW of Rwy 8 and Rwy 20.  
 Circling not authorized for CAT E when R-2401B active.  
 Circling Rwy 20 and Rwy 26 not authorized at night.  
 RVR 1800 Authorized with use of FD or AP or HUD to DA.

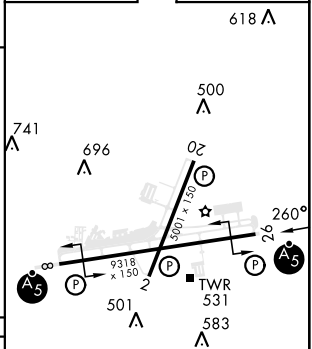
Procedure not authorized for arrivals on FSM VORTAC Airway Radials 359 CW 105.



EMERG SAFE ALT 100 NM 4500 FROM FSM VORTAC



ELEV 469	TDZE 448
----------	----------



CATEGORY	C	D	E
S-ILS 26 *	648/24	200	(200-1/2)
S-LOC 26 **	960-55	512	(600-1)
CIRCLING ***	1400-234 931 (1000-234)	1400-3	931 (1000-3)

HIRL Rwy 8-26				
MIRL Rwy 2-20				
FAF to MAP 7 NM				
Knots	120	140	160	180
Min:Sec	3:30	3:00	2:38	2:20

# HI-ILS Y or LOC Y RWY 26

SC-1, 23 JAN 2025 to 20 FEB 2025

SC-1, 23 JAN 2025 to 20 FEB 2025