

WAAS CH 77917 W08A	APP CRS 080°	Rwy Idg TDZE Apt Elev	9318 469 469
--	------------------------	-----------------------------	---

RNAV (GPS) RWY 8

FORT SMITH RGNL (F'SM)

RNP APCH - GPS.

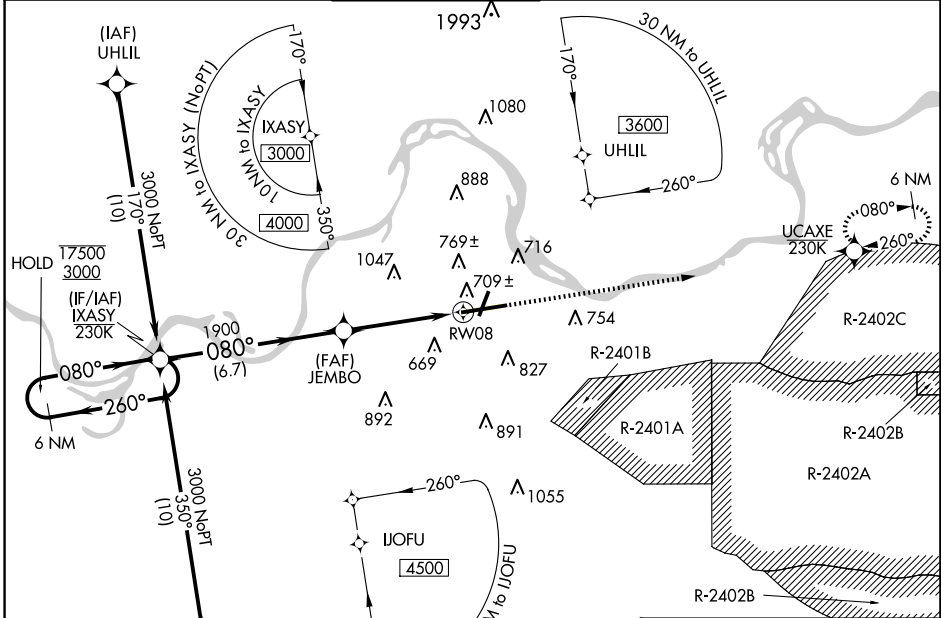
⚠ Circling NA for Cat E northwest of Rwy 8 and 20. Circling Rwy 20, 26 NA at night. For uncompensated Baro-VNAV systems, LNAV/VNAV NA below -1.1°C or above 54°C. For inop ALS, increase LPV Cat E visibility to 3/4 SM, LNAV/VNAV all Cats visibility to 1 3/8 SM and LNAV Cat C/D/E visibility to 1 3/8 SM. Circling NA for Cat E when restricted area R-2401B active.

MALSR



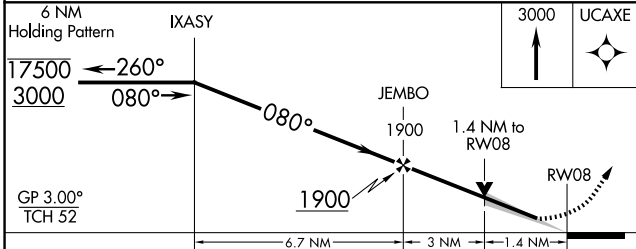
MISSED APPROACH:
Climb to 3000 direct UCAXE and hold.

ATIS 124.775	RAZORBACK APP CON * 120.9 343.75	FORT SMITH TOWER * 118.3 (CTAF) 0 323.175	GND CON 121.9 275.8	CLNC DEL 133.85 278.3	UNICOM 122.95
------------------------	--	---	-------------------------------	---------------------------------	-------------------------



SC-1, 23 JAN 2025 to 20 FEB 2025

SC-1, 23 JAN 2025 to 20 FEB 2025



ELEV 469	D TDZE 469
----------	-------------------

CATEGORY	A	B	C	D	E
LPV DA			669-1/2	200 (200-1/2)	
LNAV/VNAV DA			945-1	476 (500-1)	
LNAV MDA	960-1/2	491 (500-1/2)		960-1	491 (500-1)
C CIRCLING	1140-1	671 (700-1)	1400-2 3/4 931 (1000-2 3/4)	1400-3	931 (1000-3)

