

# RNAV (GPS) RWY 6

COLUMBUS (CSG)

WAAS CH <b>40001</b> <b>W06A</b>	APP CRS <b>056°</b>	Rwy Idg <b>6997</b>
		TDZE <b>380</b>
		Apt Elev <b>398</b>

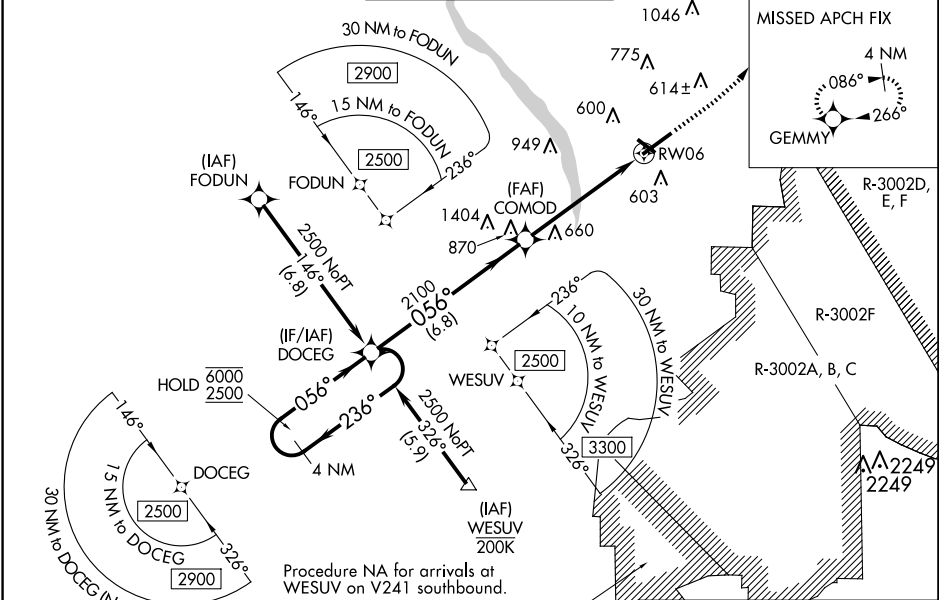
RNP APCH - GPS.

**⚠** Circling to Rwy 13, 31 and 24 NA at night. Rwy 6 helicopter visibility reduction below 3/4 SM NA. For uncompensated Baro-VNAV systems, LNAV/VNAV NA below -4°C or above 54°C. For inop ALS, increase LPV all Cats visibility to RVR 4500. For inop ALS, increase LNAV Cats A and B visibility to RVR 5500 and Cats C and D visibility to 1 1/2 SM.



**MISSED APPROACH:** Climb to 900, then climbing left turn to 2500 direct GEMMY and hold.

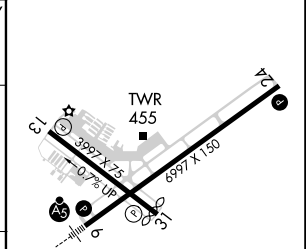
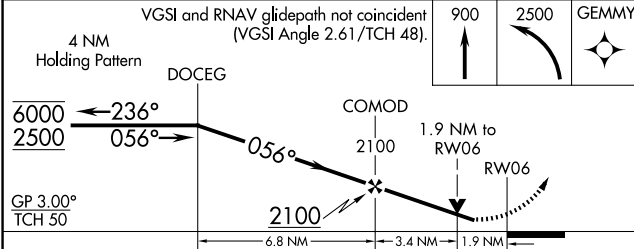
ATIS <b>127.75</b>	ATLANTA APP CON * <b>125.5 323.1</b>	COLUMBUS TOWER * <b>120.1 (CTAF) 257.8</b>	GND CON <b>121.9 348.6</b>	UNICOM <b>122.95</b>
-----------------------	---	---	-------------------------------	-------------------------



Procedure NA for arrivals at WESUV on V241 southbound.

ELEV 398 **D** TDZE 380

VGSI and RNAV glidepath not coincident (VGSI Angle 2.61/TCH 48).



CATEGORY	A	B	C	D
LPV DA		659/40	279 (300-3/4)	
LNAV/VNAV DA		832/45	452 (500-3/4)	
LNAV MDA	960/40	580 (600-3/4)	960-1 1/4	580 (600-1 1/4)
<b>C</b> CIRCLING	960-1	562 (600-1)	1140-2 1/4 742 (800-2 1/4)	1300-3 902 (1000-3)

REIL Rwy 24 **Ⓛ**  
HIRL Rwy 6-24 **Ⓛ**  
MRL Rwy 13-31 **Ⓛ**  
REIL Rws 13 and 31

SE-4, 23 JAN 2025 to 20 FEB 2025

SE-4, 23 JAN 2025 to 20 FEB 2025