

| | | | |
|--|------------------------|-----------------------------|---------------------------------------|
| WAAS CH 56331 W04A | APP CRS 043° | Rwy Idg TDZE Apt Elev | 8748 37 40 |
|--|------------------------|-----------------------------|---------------------------------------|

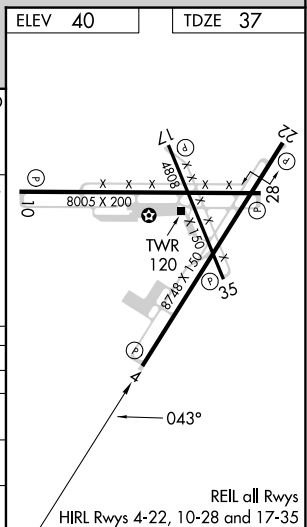
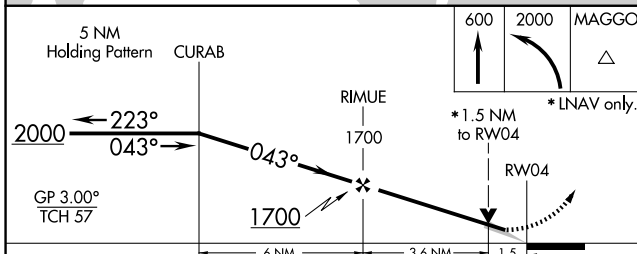
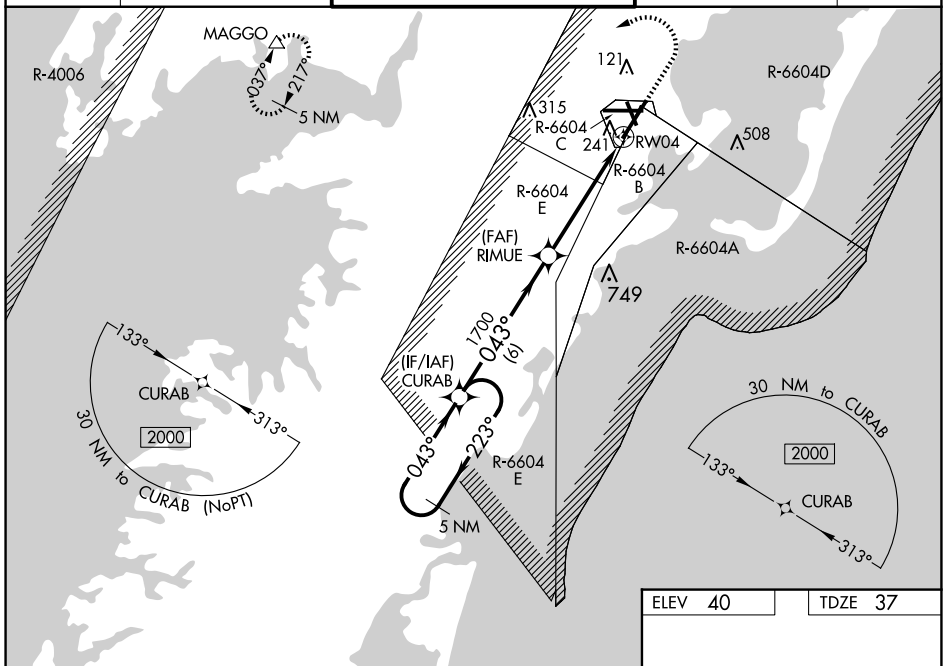
RNAV (GPS) RWY 4

WALLOPS FLIGHT FACILITY (WAL)

⚠ For uncompensated Baro-VNAV systems, LNAV/VNAV NA below -11°C (13°F) or above 54°C (130°F). DME/DME RNP-0.3 NA. When local altimeter setting not received, use Salisbury altimeter setting: increase LPV DA to 342 and all Cats visibility ¼ mile; increase LNAV/VNAV DA to 510 and all Cats visibility ¼ mile; increase all MDA 60 feet and LNAV Cats C/D and Circling Cat C visibility ¼ mile. Baro-VNAV and VDP NA when using Salisbury altimeter setting.

MISSED APPROACH: Climb to 600 then climbing left turn to 2000 direct MAGGO and hold.

| | | | | |
|------------------------|---|---|-----------------------------------|--------------------------|
| ASOS 119.175 | PATUXENT APP CON * 127.95 314.0 | WALLOPS TOWER * 126.5 (CTAF) 0 306.975 (CTAF) 0 | GND CON 127.875 269.325 | CLNC DEL 121.7 |
|------------------------|---|---|-----------------------------------|--------------------------|



| CATEGORY | A | B | C | D |
|-------------------|-------|-------------|------------------------|------------------------|
| LPV DA | | 287-¾ | 250 (300-¾) | |
| LNAV/VNAV DA | | 455-1⅞ | 418 (500-1⅞) | |
| LNAV MDA | 560-1 | 523 (600-1) | 560-1½ | 523 (600-1½) |
| C CIRCLING | 600-1 | 560 (600-1) | 620-1½ 580 (600-1½) | 860-2¾ 820 (900-2¾) |

NE-3, 23 JAN 2025 to 20 FEB 2025

NE-3, 23 JAN 2025 to 20 FEB 2025