

| | | |
|--|---------------------------|---|
| VORTAC SBY 111.2 Chan 49 | APP CRS SBY [24.1] Arc | Rwy Idg 8005 TDZE 38 Apt Elev 40 |
|--|---------------------------|---|

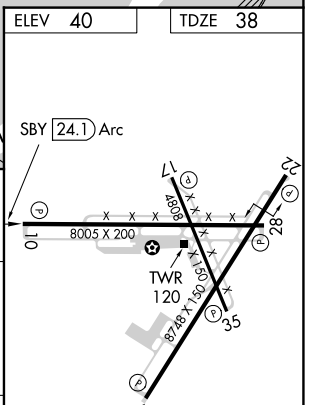
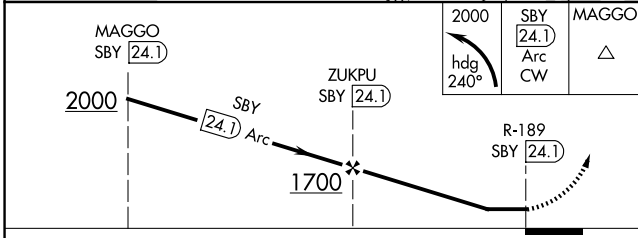
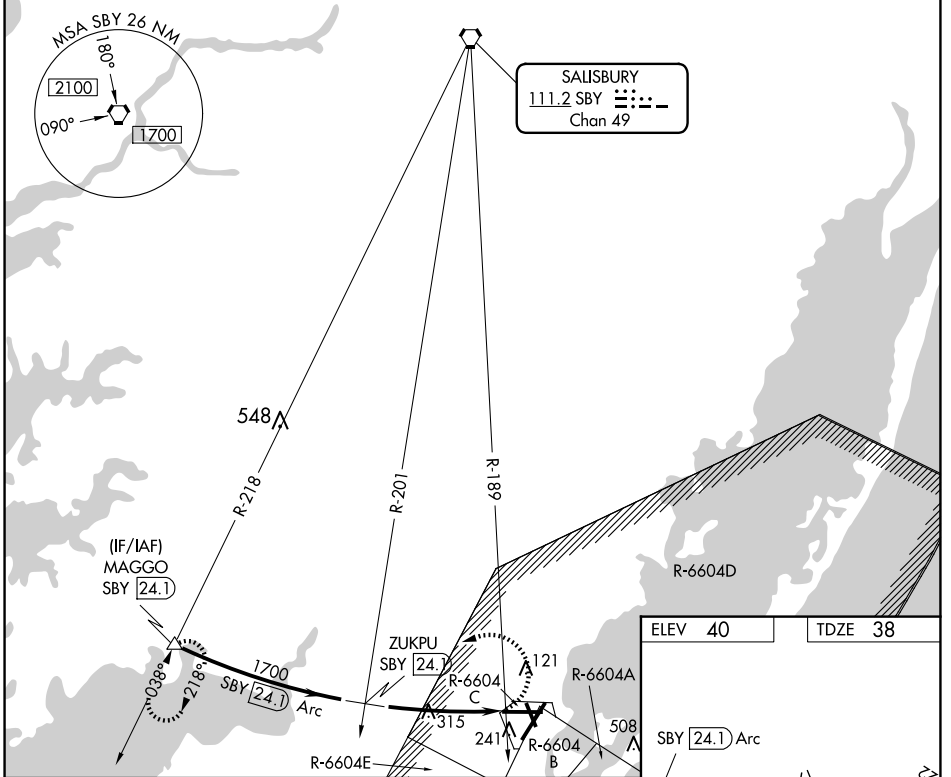
VOR/DME or TACAN RWY 10

WALLOPS FLIGHT FACILITY (WAL)

⚠ When local altimeter setting not received, use Salisbury altimeter setting and increase all MDA 60 feet and Circling Cts C/D visibility ¼ mile. Helicopter visibility reduction below ¾ SM NA.

MISSED APPROACH: Climbing left turn to 2000 on heading 240° and SBY VORTAC 24.1 DME Arc clockwise to MAGGO/SBY 24.1 DME and hold.

| | | | | |
|------------------------|---|---|-----------------------------------|--------------------------|
| ASOS 119.175 | PATUXENT APP CON ★ 127.95 314.0 | WALLOPS TOWER ★ 126.5 (CTAF) 0 306.975 (CTAF) 0 | GND CON 127.875 269.325 | CLNC DEL 121.7 |
|------------------------|---|---|-----------------------------------|--------------------------|



| CATEGORY | A | B | C | D |
|-------------------|--------|--------------|--------------|--------------|
| S-10 | 900-1¼ | 862 (900-1¼) | 900-2½ | 862 (900-2½) |
| C CIRCLING | 900-1¼ | 860 (900-1¼) | 900-2½ | 900-2¾ |
| | | | 860 (900-2½) | 860 (900-2¾) |

REIL all Rwys
HIRL Rws 4-22, 10-28 and 17-35

NE-3, 23 JAN 2025 to 20 FEB 2025

NE-3, 23 JAN 2025 to 20 FEB 2025