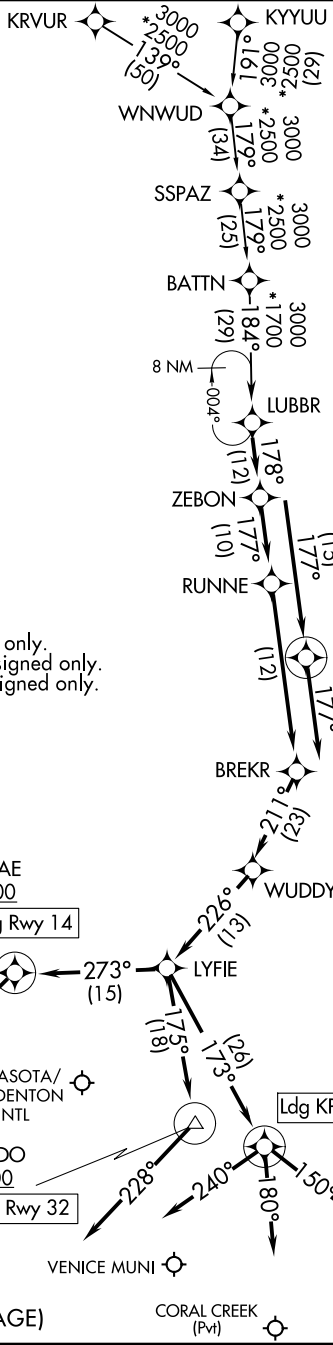


# LUBBR THREE ARRIVAL (RNAV)

SARASOTA/BRADENTON, FLORIDA

RNAV 1 - DME/DME/IRU or GPS. RADAR required.
---

TAMPA APP CON  
 135.5 279.6 (LAL/SRQ/VNC)  
 119.65 353.575 (PGD/FA54)  
 LAL ATIS 118.025  
 PGD ATIS \* 135.675  
 SRQ ATIS 124.375



NOTE: Jet and turboprop aircraft only.  
 NOTE: KRVUR Transition ATC assigned only.  
 NOTE: SSPAZ Transition ATC assigned only.

SE-3, 23 JAN 2025 to 20 FEB 2025

SE-3, 23 JAN 2025 to 20 FEB 2025

(NARRATIVE ON FOLLOWING PAGE)

# LUBBR THREE ARRIVAL (RNAV)

SARASOTA/BRADENTON, FLORIDA

NOTE: Chart not to scale.

ARRIVAL ROUTE DESCRIPTION

KRVUR TRANSITION (KRVUR.LUBBR3)

KYYUU TRANSITION (KYYUU.LUBBR3)

SSPAZ TRANSITION (SSPAZ.LUBBR3)

KSRQ: From LUBBR on track 178° to ZEBON, then on track 177° to RUNNE, then on track 177° to BREKR.

LANDING KSRQ RUNWAY 14: From BREKR on track 211° to WUDDY, then on track 226° to LYFIE, then on track 273° to cross RUTAE at or above 3000, then on heading 230° or as assigned by ATC. Expect RADAR vectors to final approach course.

LANDING KSRQ RUNWAY 32: From BREKR on track 211° to WUDDY, then on track 226° to LYFIE, then on track 175° to cross MURDO at or above 3000, then on heading 228° or as assigned by ATC. Expect RADAR vectors to final approach course.

LANDING FA54: From LUBBR on track 178° to ZEBON, then on track 177° to RUNNE, then on track 177° to BREKR, then on track 211° to WUDDY, then on track 226° to LYFIE, then on track 173° to cross ROSTY at or above 3000, then on heading 180° or as assigned by ATC. Expect RADAR vectors to final approach course.

LANDING KLAL: From LUBBR on track 178° to ZEBON, then on track 177° to cross ZEPHR at or above 3000, then on track 177°. Expect RADAR vectors to final approach course.

LANDING KPGD: From LUBBR on track 178° to ZEBON, then on track 177° to RUNNE, then on track 177° to BREKR, then on track 211° to WUDDY, then on track 226° to LYFIE, then on track 173° to cross ROSTY at or above 3000, then on heading 150° or as assigned by ATC. Expect RADAR vectors to final approach course.

LANDING KVNC: From LUBBR on track 178° to RUNNE, then on track 177° to BREKR, then on track 211° to WUDDY, then on track 226° to LYFIE, then on track 173° to cross ROSTY at or above 3000, then on heading 240° or as assigned by ATC. Expect RADAR vectors to final approach course.

SE-3, 23 JAN 2025 to 20 FEB 2025

SE-3, 23 JAN 2025 to 20 FEB 2025