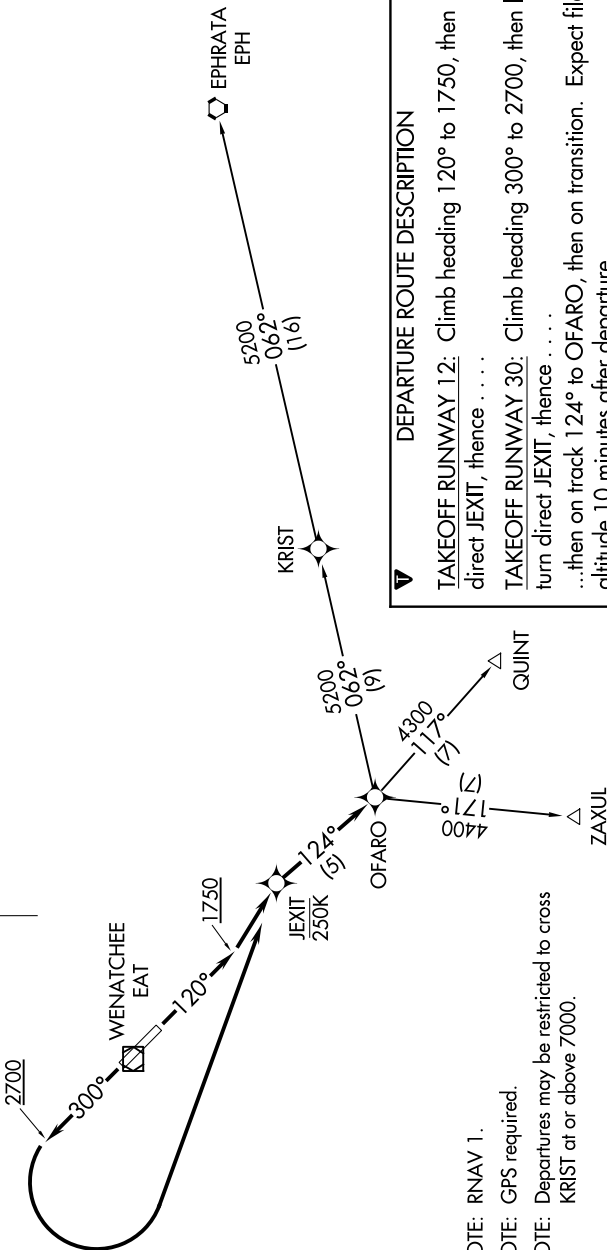


NW-1, 23 JAN 2025 to 20 FEB 2025

(NOTES CONTINUED ON FOLLOWING PAGE)

SEATTLE CENTER  
126.1  
UNICOM  
123.0  
ASOS  
119.925



**TOP ALTITUDE:  
ASSIGNED BY ATC**

**DEPARTURE ROUTE DESCRIPTION**

**TAKEOFF RUNWAY 12:** Climb heading 120° to 1750, then direct JEXIT, thence . . . .

**TAKEOFF RUNWAY 30:** Climb heading 300° to 2700, then left turn direct JEXIT, thence . . . .

...then on track 124° to OFARO, then on transition. Expect filed altitude 10 minutes after departure.

- EPHRATA TRANSITION (OFARO2.EPH)
- QUINT TRANSITION (OFARO2.QUINT)
- ZAXUL TRANSITION (OFARO2.ZAXUL)

NOTE: RNAV 1.  
NOTE: GPS required.  
NOTE: Departures may be restricted to cross KRIST at or above 7000.

**TAKEOFF MINIMUMS**  
Rwy 12: Standard with minimum climb of 550' per NM to 3200.  
Rwy 30: Standard with minimum climb of 500' per NM to 4000.

NOTE: Chart not to scale.

NW-1, 23 JAN 2025 to 20 FEB 2025