

APP CRS	Rwy Idg	<b>7000</b>
<b>120°</b>	TDZE	<b>1225</b>
	Apt Elev	<b>1249</b>

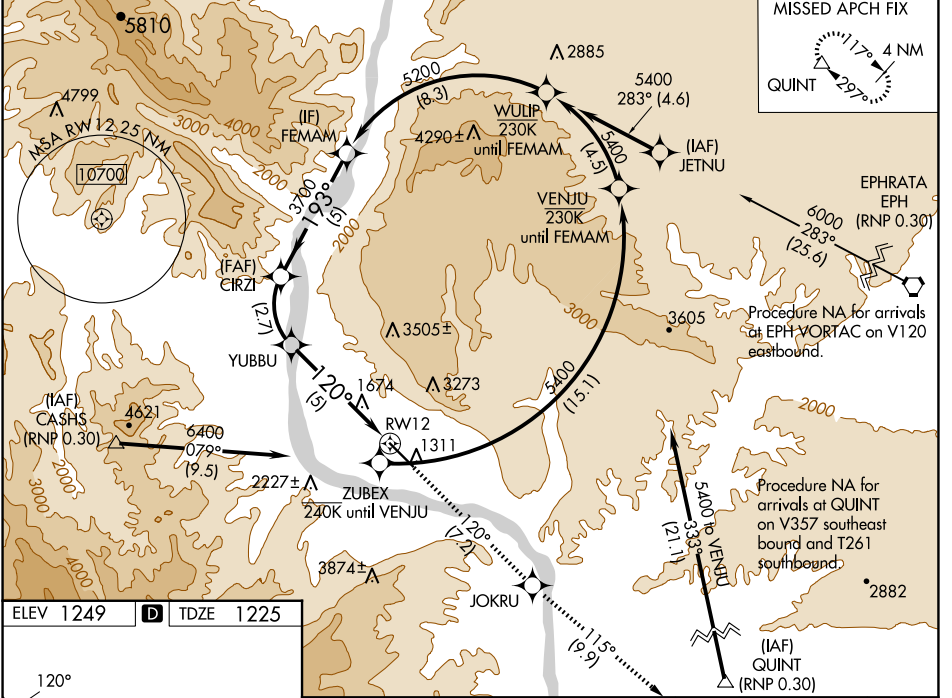
# RNAV (RNP) RWY 12

PANGBORN MEML (EAT)

**▽** For uncompensated Baro-VNAV systems, procedure NA below -10°C (14°F) or above 54°C (130°F). RF required. GPS required. FD or HUD required.

**MALSR** MISSED APPROACH: Climb to 5400 on track 120° to JOKRU and on track 115° to QUINT and hold.  
 \*Missed approach requires a minimum climb of 319 feet per NM to 3700.  
 #Missed approach requires a minimum climb of 295 feet per NM to 3700.

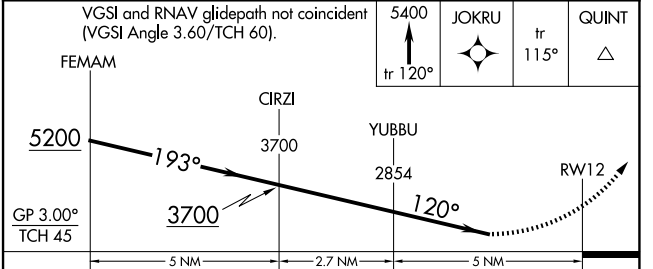
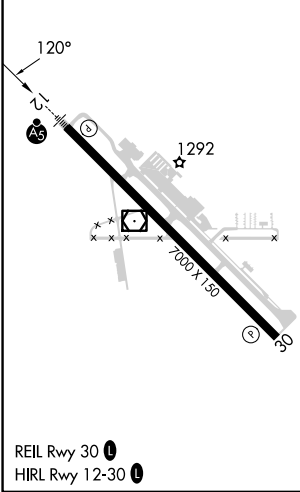
ASOS <b>119.925</b>	SEATTLE CENTER <b>126.1</b>	UNICOM <b>123.0 (CTAF) 0</b>
------------------------	--------------------------------	---------------------------------



NW-1, 23 JAN 2025 to 20 FEB 2025

NW-1, 23 JAN 2025 to 20 FEB 2025

ELEV 1249	<b>D</b>	TDZE 1225
-----------	----------	-----------



CATEGORY	A	B	C	D
RNP 0.15 DA*		1995-3	770 (800-3)	
RNP 0.19 DA#		2072-3	847 (900-3)	
RNP 0.30 DA		2417-5	1192 (1200-5)	

## AUTHORIZATION REQUIRED