

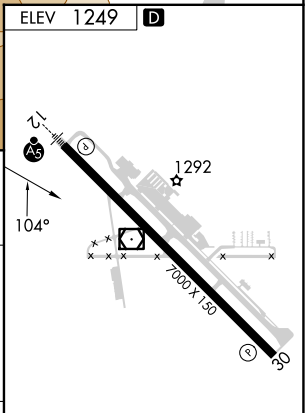
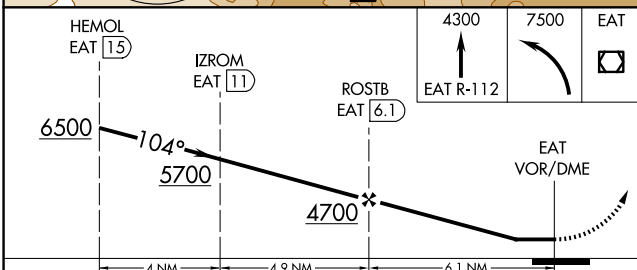
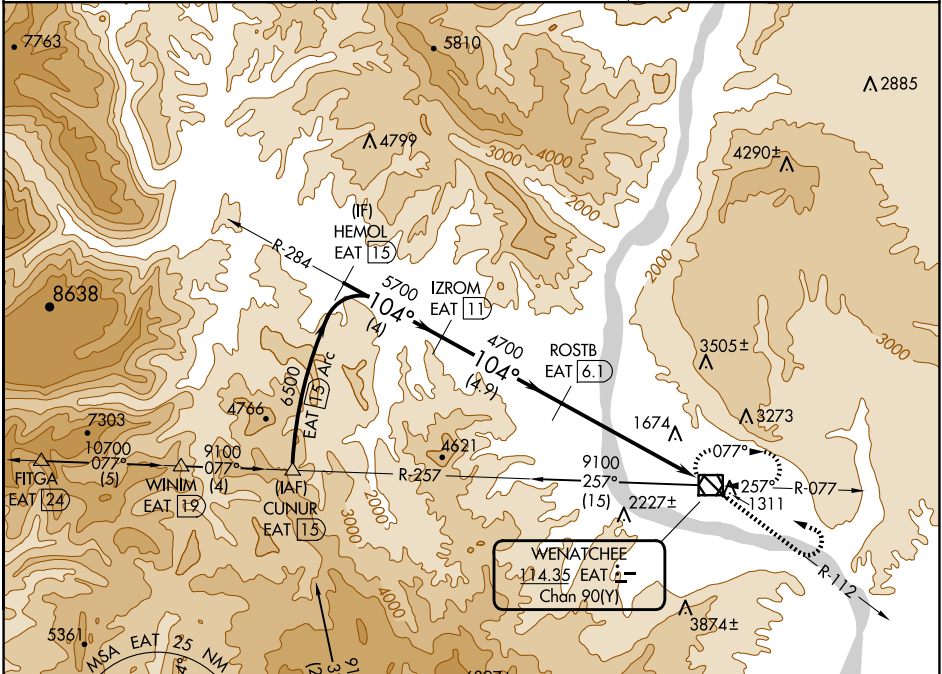
VOR/DME EAT 114.35 Chan 90(Y)	APP CRS 104°	Rwy Idg TDZE Apt Elev 1249	N/A N/A N/A
---	------------------------	--------------------------------------	-------------------

VOR-B

PANGBORN MEML (EAT)

	DME required. Circling NA northeast of Rwy 12-30.	MISSED APPROACH: Climb to 4300 on EAT VOR/DME R-112 then climbing left turn to 7500 direct EAT VOR/DME and hold, continue climb-in-hold to 7500.
--	--	--

ASOS 119.925	SEATTLE CENTER 126.1	UNICOM 123.0 (CTAF) 0
------------------------	--------------------------------	---------------------------------



CATEGORY	A	B	C	D
CIRCLING	2660-1¼ 1411 (1500-1¼)	2660-1½ 1411 (1500-1½)	3200-3 1951 (2000-3)	3900-3 2651 (2700-3)

REIL Rwy 30 0	HIRL Rwy 12-30 0
----------------------	-------------------------

NW-1, 23 JAN 2025 to 20 FEB 2025

NW-1, 23 JAN 2025 to 20 FEB 2025