

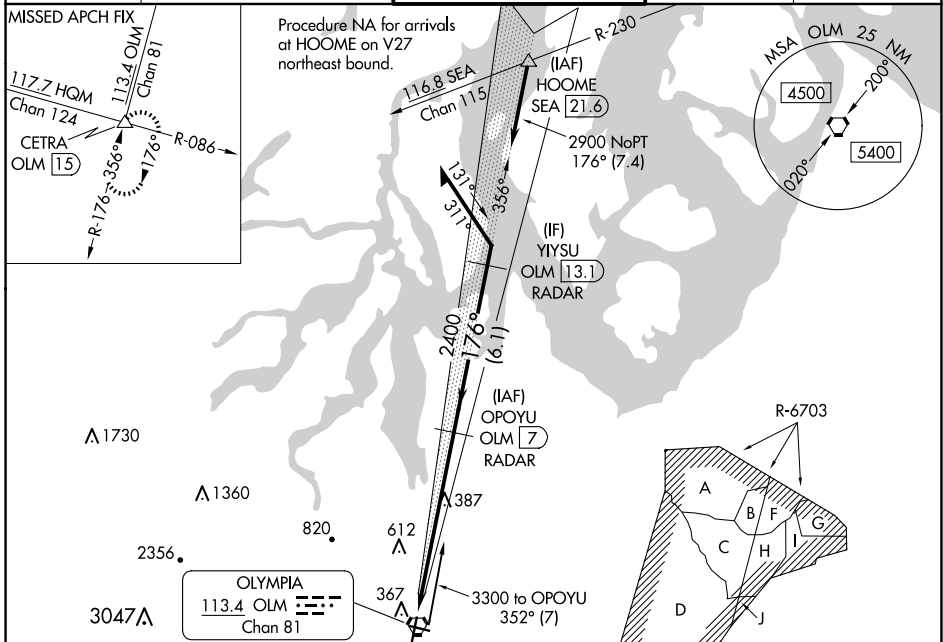
LOC I-OLM 111.9	APP CRS 176°	Rwy Idg 5500
		TDZE 207
		Apt Elev 208

ILS or LOC RWY 17

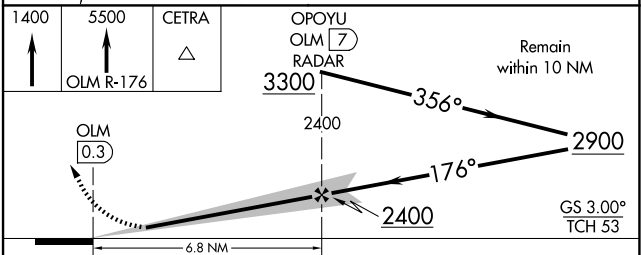
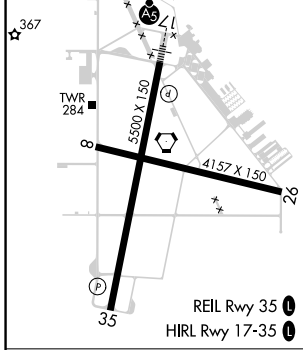
OLYMPIA RGNL (OLM)

<p>DME or RADAR required. For inop ALS, increase S-LOC 17 Cat C/D visibility to 1 3/8 SM.</p>	<p>MALS</p>	<p>MISSED APPROACH: Climb to 1400 then climb to 5500 on OLM VORTAC R-176 to CETRA INT/OLM 15 DME and hold, continue climb-in-hold to 5500.</p>

ATIS★ 135.725	SEATTLE APP CON 121.1 290.9	OLYMPIA TOWER★ 124.4(CTAF) 254.25	GND CON 121.6	UNICOM 122.95
-------------------------	---------------------------------------	---	-------------------------	-------------------------



ELEV 208	TDZE 207
----------	----------



CATEGORY	A	B	C	D
S-ILS 17	407-1/2 200 (200-1/2)			
S-LOC 17	680-1/2	473 (500-1/2)	680-1	473 (500-1)
<input checked="" type="checkbox"/> CIRCLING	720-1 512 (600-1)	860-1 652 (700-1)	1020-2 1/2 812 (900-2 1/2)	1020-2 3/4 812 (900-2 3/4)

FAF to MAP 6.8 NM

Knots	60	90	120	150	180
Min:Sec	6:48	4:32	3:24	2:43	2:16

NW-1, 23 JAN 2025 to 20 FEB 2025

NW-1, 23 JAN 2025 to 20 FEB 2025