

WAAS CH 45599 W17A	APP CRS 176°	Rwy ldg 5500 TDZE 207 Apt Elev 208
--	------------------------	---

RNAV (GPS) RWY 17

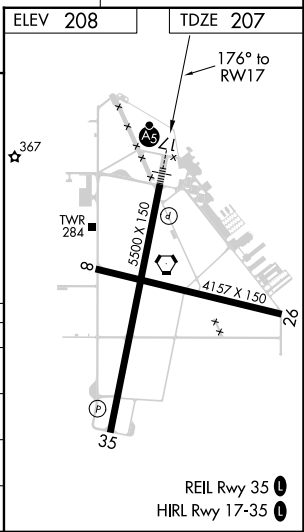
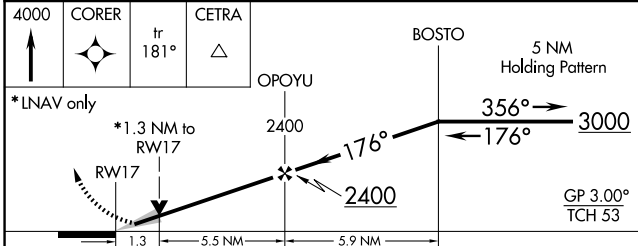
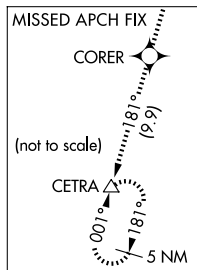
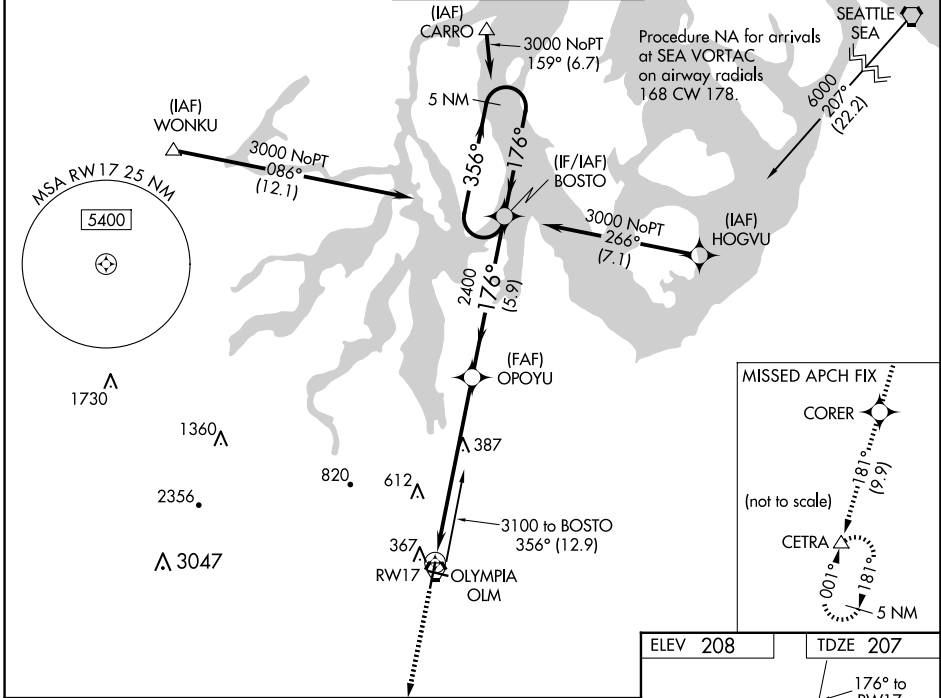
OLYMPIA RGNL (OLM)

⚠ For uncompensated Baro-VNAV systems, LNAV/VNAV NA below -9°C (16°F) or above 54°C (130°F). DME/DME RNP-0.3 NA.
For inop ALS; increase LNAV/VNAV visibility all Cats to 1½ SM.
Increase LNAV Cats C/D to 1¾ SM.



MISSED APPROACH: Climb to 4000 direct CORER and on track 181° to CETRA and hold, continue climb-in-hold to 4000.

ATIS ★ 135.725	SEATTLE APP CON 121.1 290.9	OLYMPIA TOWER ★ 124.4 (CTAF) 254.25	GND CON 121.6	UNICOM 122.95
--------------------------	---------------------------------------	---	-------------------------	-------------------------



CATEGORY	A	B	C	D
LPV DA	407-½ 200 (200-½)			
LNAV/VNAV DA	629-¾ 422 (500-¾)			
LNAV MDA	680-½ 473 (500-½)	680-1 473 (500-1)		
CIRCLING	720-1	860-1	1020-2½	1020-2¾
	512 (600-1)	652 (700-1)	812 (900-2½)	812 (900-2¾)

NW-1, 23 JAN 2025 to 20 FEB 2025

NW-1, 23 JAN 2025 to 20 FEB 2025

REIL Rwy 35
HIRL Rwy 17-35