


LOC I-PKB <b>110.7</b>	APP CRS <b>027°</b>	Rwy Idg TDZE Apt Elev	<b>6780</b> <b>830</b> <b>859</b>
---------------------------	------------------------	-----------------------------	---

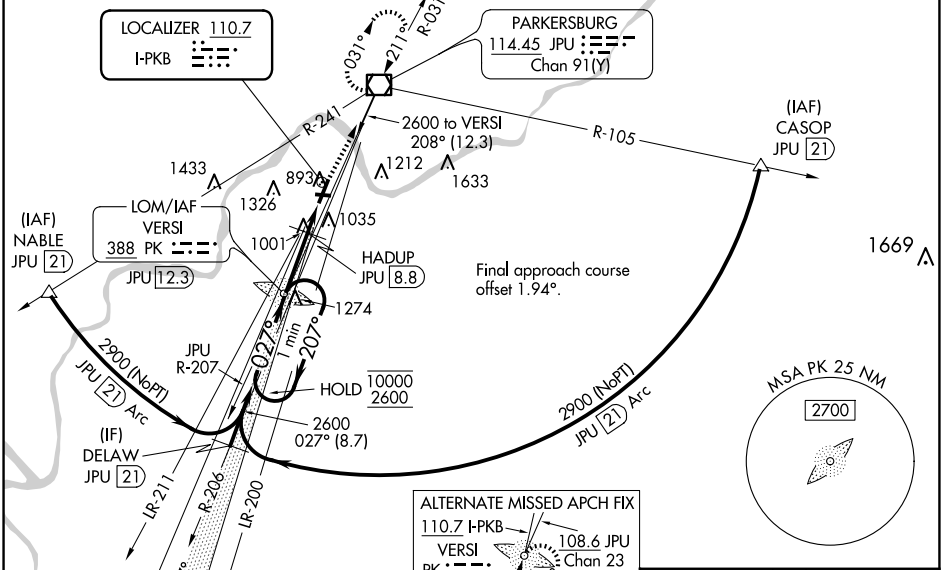
**ILS or LOC RWY 3**  
MID-OHIO VALLEY RGNL (PKB)

**NA** Circling Rwy 10, 28 NA at night. Rwy 3 helicopter visibility reduction below RVR 4000 NA. When local altimeter setting not received, use Athens/Albany altimeter setting: increase DA to 1301 feet and visibility all Cats ¼ SM; increase all MDAs 100 feet and visibility Cats C and D ½ SM. For inop ALS, increase S-LOC 3 Cat A/B and S-LOC 3 HADUP fix minimums (DME required) Cat A/B visibility to RVR 5500. For inop ALS when using Athens/Albany altimeter setting, increase S-ILS 3 all Cats visibility to 1½ SM and S-LOC 3 all Cats and S-LOC 3 HADUP fix minimums (DME required) Cat A/B visibility to RVR 5500.

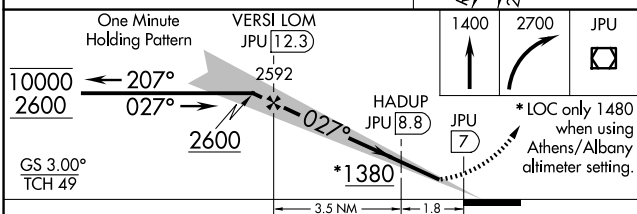
**MALSR** 

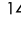
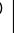
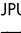
**MISSED APPROACH:** Climb to 1400 then climbing right turn to 2700 direct JPU VOR/DME and hold.

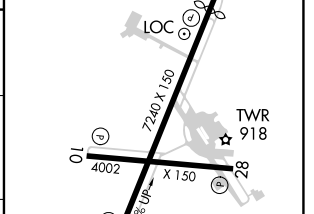
ATIS <b>124.35</b>	INDIANAPOLIS CENTER <b>125.55 317.475</b>	<b>PARKERSBURG TOWER *</b> <b>123.7 (CTAF) 257.8</b>	GND CON <b>126.45</b>	UNICOM <b>122.95</b>
-----------------------	--	---	--------------------------	-------------------------



ELEV 859	<b>D</b> TDZE 830
HIRL Rwys 3-21 and 10-28	REIL Rwy 10, 21
REIL Rwy 28	



1400	2700	JPU
		



CATEGORY	A	B	C	D
S-ILS 3	1201/40 371 (400-¾)			
S-LOC 3	1380/40	550 (600-¾)	1380/60	550 (600-1¼)
CIRCLING	1380-1	521 (600-1)	781 (800-2¼)	781 (800-2½)
HADUP FIX MINIMUMS (DME REQUIRED)				
S-LOC 3	1260/40 430 (500-¾)			
CIRCLING	1320-1 461 (500-1)	1380-1 521 (600-1)	1640-2¼ 781 (800-2¼)	1640-2½ 781 (800-2½)

FAF to MAP 5.3 NM					
Knots	60	90	120	150	180
Min:Sec	5:18	3:32	2:39	2:07	1:46

NE-4, 23 JAN 2025 to 20 FEB 2025

NE-4, 23 JAN 2025 to 20 FEB 2025