

LOC/DME I-TQR <b>108.7</b> Chan 24	APP CRS <b>233°</b>	Rwy Idg <b>8002</b> TDZE <b>661</b> Apt Elev <b>668</b>
--	------------------------	---

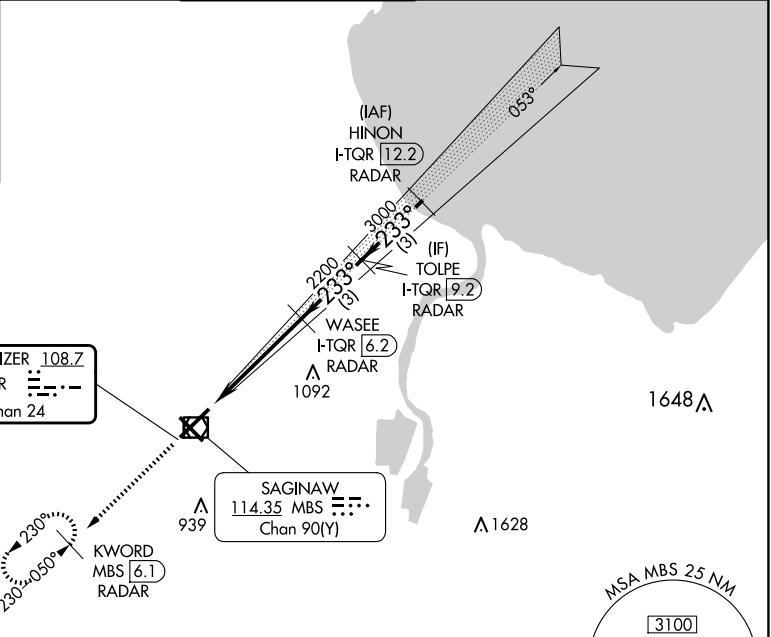
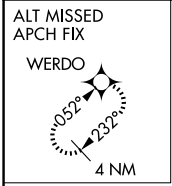
# ILS or LOC RWY 23

MBS INTL (MBS)

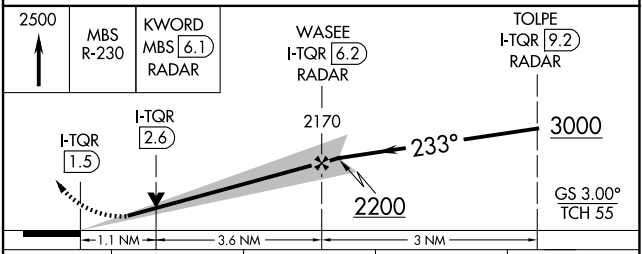
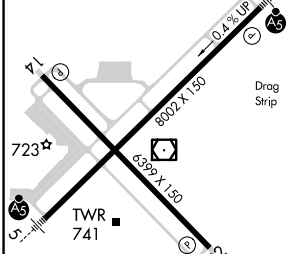
DME or RADAR required. RADAR required for procedure entry.  
 \*RVR 1800 authorized with use of FD or AP or HUD to DA.

MALS R  
 MISSED APPROACH: Climb to 2500 on MBS VOR/DME R-230 to KWORD/MBS 6.1 DME/RADAR and hold.

ATIS <b>125.925</b>	GREAT LAKES APP CON * <b>126.45 235.625</b>	SAGINAW TOWER * <b>120.1(CTAF) 257.7</b>	GND CON <b>121.7</b>	CLNC DEL <b>121.85</b>	UNICOM <b>122.95</b>
------------------------	--	---	-------------------------	---------------------------	-------------------------



ELEV 668	<b>D</b>	TDZE 661
----------	----------	----------



REIL Rwy 14 and 32	HIRL Rwy 5-23 and 14-32	FAF to MAP 4.7 NM		
Knots 60 90 120 150 180	Min:Sec 4:42 3:08 2:21 1:53 1:34			
CIRCLING	1080-1 412 (500-1)	1120-1 452 (500-1)	1240-1½ 572 (600-1½)	1240-2 572 (600-2)

EC-1, 23 JAN 2025 to 20 FEB 2025

EC-1, 23 JAN 2025 to 20 FEB 2025