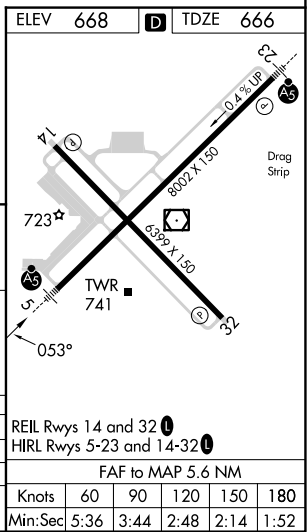
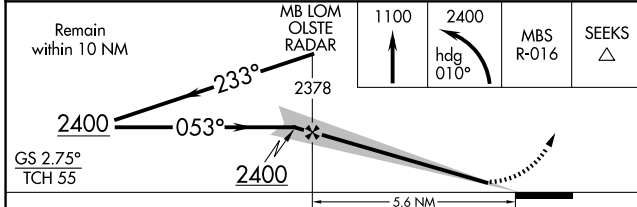
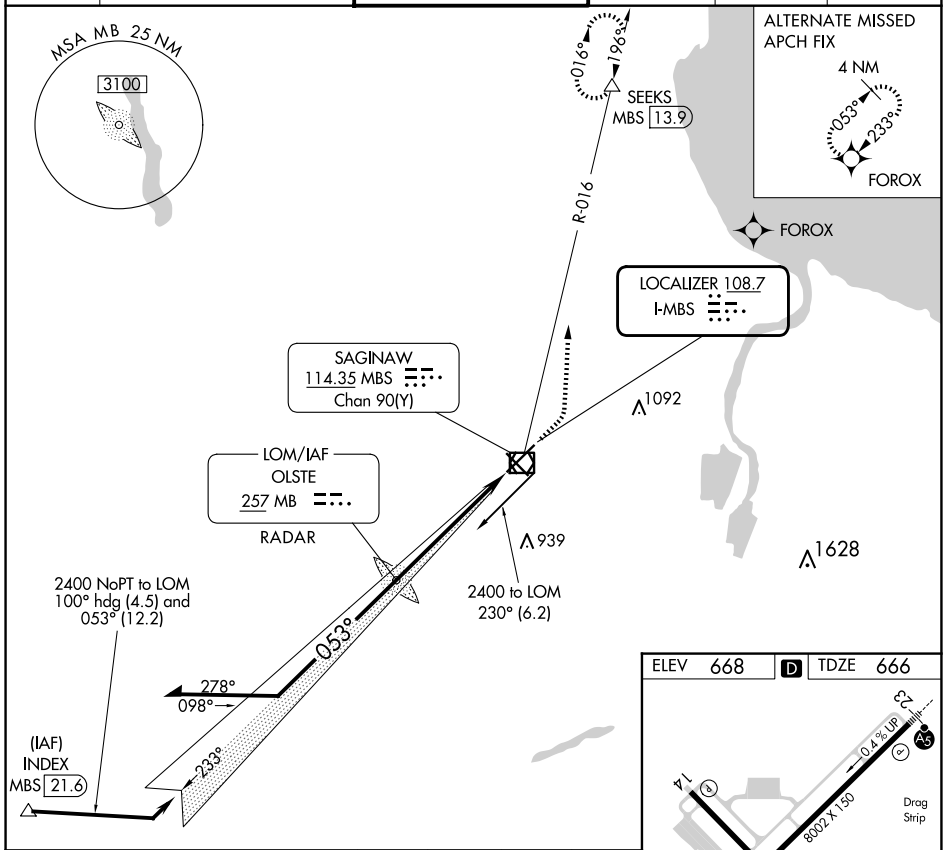


LOC I-MBS <b>108.7</b>	APP CRS <b>053°</b>	Rwy Idg <b>8002</b>
		TDZE <b>666</b>
		Apt Elev <b>668</b>

# ILS or LOC RWY 5

MBS INTL (MBS)

DME required.		MALSR	MISSED APPROACH: Climb to 1100 then climbing left turn to 2400 on heading 010° and MBS VOR/DME R-016 to SEEKS/MBS 13.9 DME and hold.					
* RVR 1800 authorized with use of FD or AP or HUD to DA.			ATIS <b>125.925</b>	GREAT LAKES APP CON * <b>126.45 235.625</b>	SAGINAW TOWER * <b>120.1 (CTAF) 257.7</b>	GND CON <b>121.7</b>	CLNC DEL <b>121.85</b>	UNICOM <b>122.95</b>



Remain within 10 NM	1100	2400	MBS R-016	SEEKS
GS 2.75°	233°	053°	hdg 010°	△
TCH 55	2378	2400	5.6 NM	

CATEGORY	A	B	C	D
S-ILS 5 *		866/24	200 (200-½)	
S-LOC 5	1100/24	434 (500-½)	1100/40	434 (500-¾)
CIRCLING	1100-1 432 (500-1)	1120-1 452 (500-1)	1240-1½ 572 (600-1½)	1240-2 572 (600-2)

REIL Rwy 14 and 32	
HIRL Rwy 5-23 and 14-32	
FAF to MAP 5.6 NM	
Knots	60 90 120 150 180
Min:Sec	5:36 3:44 2:48 2:14 1:52

EC-1, 23 JAN 2025 to 20 FEB 2025

EC-1, 23 JAN 2025 to 20 FEB 2025