

WAAS CH 82010 W05A	APP CRS 053°	Rwy Idg TDZE Apt Elev	8002 666 668
--	------------------------	-----------------------------	---

RNAV (GPS) RWY 5

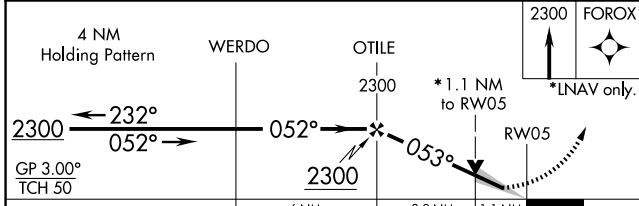
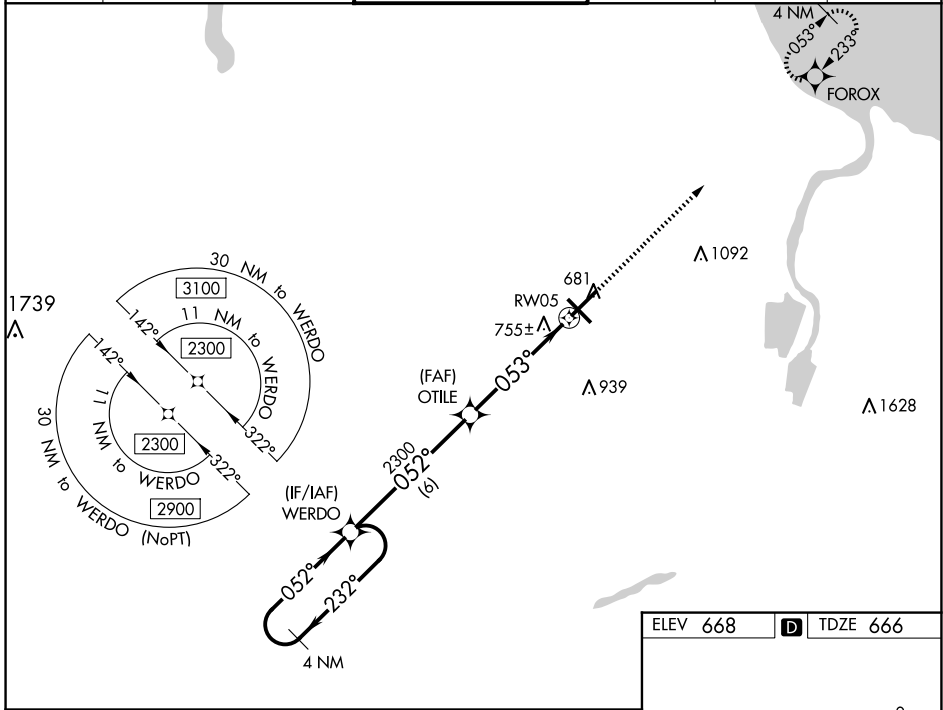
MBS INTL (MBS)

▽ For uncompensated Baro-VNAV systems, LNAV/VNAV NA below -18°C (0°F) or above 54°C (130°F). DME/DME RNP-0.3 NA. For inoperative ALS, increase LNAV/VNAV all Cats visibility to RVR 4500 and LNAV Cats C/D visibility to RVR 6000.
** RVR 1800 authorized with use of FD or AP or HUD to DA.

MALSRL

MISSED APPROACH:
Climb to 2300 direct FOROX and hold.

ATIS 125.925	GREAT LAKES APP CON* 126.45 235.625	SAGINAW TOWER * 120.1(CTAF) 0 257.7	GND CON 121.7	CLNC DEL 121.85	UNICOM 122.95
------------------------	---	---	-------------------------	---------------------------	-------------------------



ELEV 668 **D** TDZE 666

2300 FOROX
*1.1 NM to RW05
*LNAV only.
RW05
6360 X 130
8002 X 130
TWR 741
5-32
053°
REIL Rwy 14 and 32
HIRL Rwy 5-23 and 14-32

CATEGORY	A	B	C	D
LPV DA**		866/24	200 (200-½)	
LNAV/VNAV DA		955/24	289 (300-½)	
LNAV MDA	1080/24	414 (500-½)	1080/40	414 (500-¾)
C CIRCLING	1080-1 412 (500-1)	1120-1 452 (500-1)	1240-1½ 572 (600-1½)	1240-2 572 (600-2)

EC-1, 23 JAN 2025 to 20 FEB 2025

EC-1, 23 JAN 2025 to 20 FEB 2025