

LOC/DME I-EKW 110.9 Chan 46	APP CRS 289°	Rwy Idg TDZE Apt Elev 7001 990 1009
--	------------------------	---

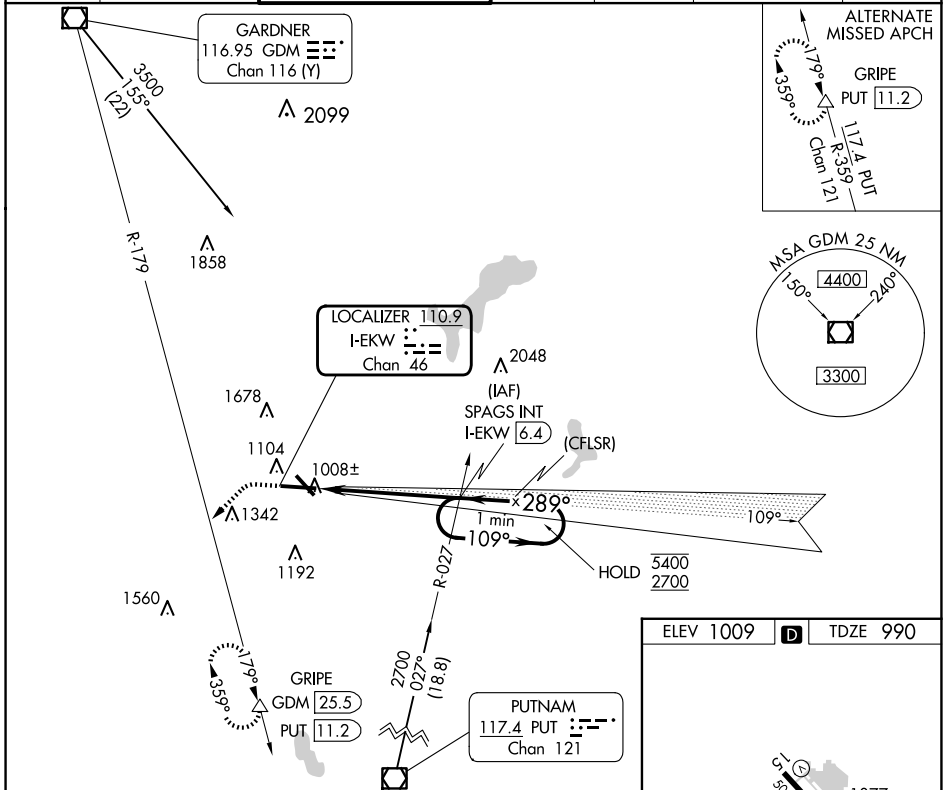
ILS or LOC RWY 29

WORCESTER RGNL (ORH)

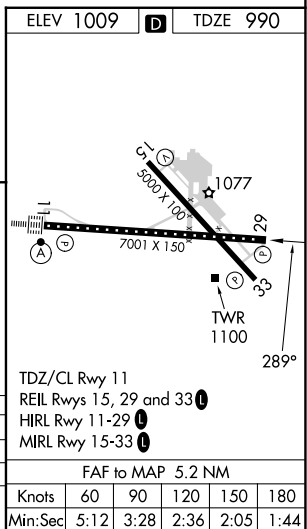
Autopilot coupled approach NA below 1430 feet.

MISSED APPROACH: Climb to 1600 then climbing left turn to 3000 on heading 240° and on GDM VOR/DME R-179 to GRIPE INT/GDM 25.5 DME and hold, continue climb-in-hold to 3000.

ATIS 126.55	BRADLEY APP CON 119.0 327.1	WORCESTER TOWER* 120.5 (CTAF) 263.0	GND CON 123.85	CLNC DEL 128.65	CLNC DEL 119.0 (When twr closed)	UNICOM 122.95
-----------------------	---------------------------------------	--	--------------------------	---------------------------	---	-------------------------



1600	3000	GDM	GRIPE	SPAGS INT I-EKW 6.4	One Minute Holding Pattern
↑	hdg 240°	R-179	△	2700	
I-EKW 1.2		I-EKW 2.3		109° → 5400	GS 3.00° TCH 54
← 289°				← 289°	
1.1 NM		4.1 NM			
CATEGORY	A	B	C	D	
S-ILS 29		1190/40	200 (200-¾)		
S-LOC 29		1380/55	390 (400-1)		
CIRCLING	1560-1 551 (600-1)	1740-1 731 (800-1)	2000-3 991 (1000-3)		



NE-1, 23 JAN 2025 to 20 FEB 2025

NE-1, 23 JAN 2025 to 20 FEB 2025