

WAAS Ch <b>82299</b> <b>W29A</b>	APP CRS <b>289°</b>	Rwy Idg TDZE Apt Elev	<b>7001</b> <b>990</b> <b>1009</b>
--	------------------------	-----------------------------	--

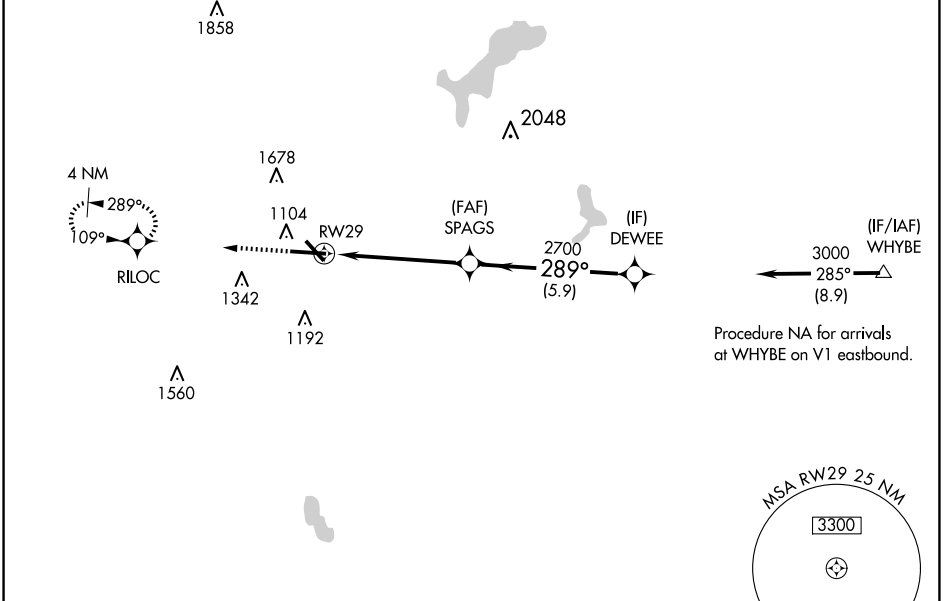
# RNAV (GPS) RWY 29

WORCESTER RGNL (ORH)

**▽** For uncompensated Baro-VNAV systems, LNAV/VNAV NA below -20°C (-4°F) or above 54°C (130°F).  
**△** DME/DME RNP -0.3 NA.

MISSED APPROACH: Climb to 3000 direct RILOC and hold.

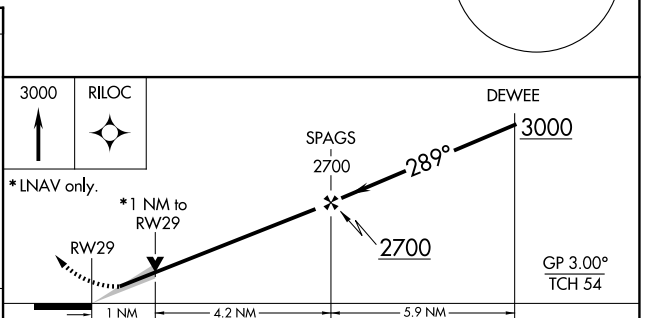
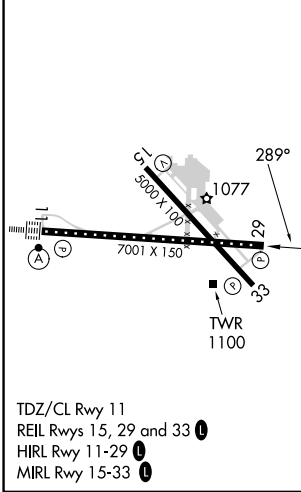
ATIS <b>126.55</b>	BRADLEY APP CON <b>119.0 327.1</b>	WORCESTER TOWER* <b>120.5 (CTAF) 263.0</b>	GND CON <b>123.85</b>	CLNC DEL <b>128.65</b>	CLNC DEL <b>119.0</b> (When twr closed)	UNICOM <b>122.95</b>
-----------------------	---------------------------------------	---	--------------------------	---------------------------	---	-------------------------



NE-1, 23 JAN 2025 to 20 FEB 2025

NE-1, 23 JAN 2025 to 20 FEB 2025

ELEV 1009	<b>D</b>	TDZE 990
-----------	----------	----------



CATEGORY	A	B	C	D
LPV DA		1190/50	200 (200-1)	
LNAV/VNAV DA		1261/50	271 (300-1)	
LNAV MDA		1360/55	370 (400-1)	
<b>C</b> CIRCLING	1560-1 551 (600-1)	1720-1 711 (800-1)	2000-3	991 (1000-3)