

APP CRS <b>333°</b>	Rwy Idg <b>5000</b>
	TDZE <b>999</b>
	Apt Elev <b>1009</b>

# RNAV (GPS) RWY 33

WORCESTER RGNL (ORH)

RNP APCH.

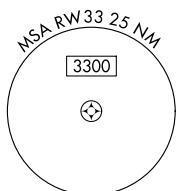
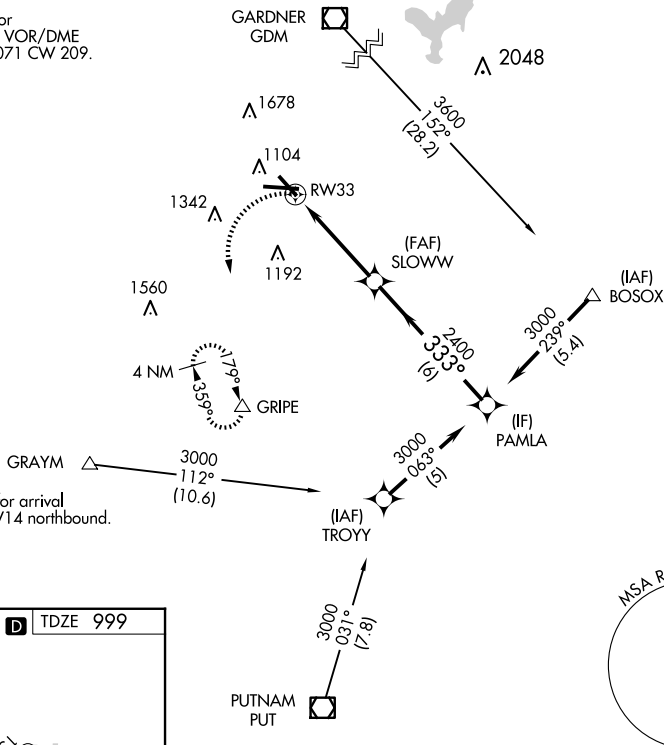
- ▼ When local altimeter setting not received, use Bedford altimeter setting and increase all MDAs 200 feet and visibility LNAV Cat C/D  $\frac{5}{8}$  SM and visibility Circling Cat B  $\frac{1}{4}$  SM. VDP NA with Bedford altimeter setting.

MISSED APPROACH:  
Climbing left turn to 3000  
direct GRIPE and hold.

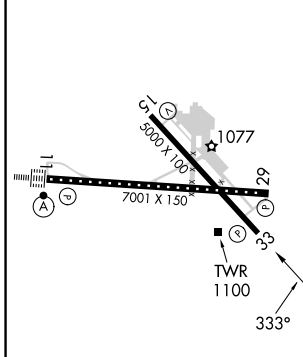
ATIS <b>126.55</b>	BRADLEY APP CON <b>119.0 327.1</b>	WORCESTER TOWER★ <b>120.5 (CTAF) 263.0</b>	GND CON <b>123.85</b>	CLNC DEL <b>128.65</b>	CLNC DEL <b>119.0</b> (When twr closed)	UNICOM <b>122.95</b>
-----------------------	---------------------------------------	-----------------------------------------------	--------------------------	---------------------------	-----------------------------------------------	-------------------------

Procedure NA for arrival on GDM VOR/DME airway radials 071 CW 209.

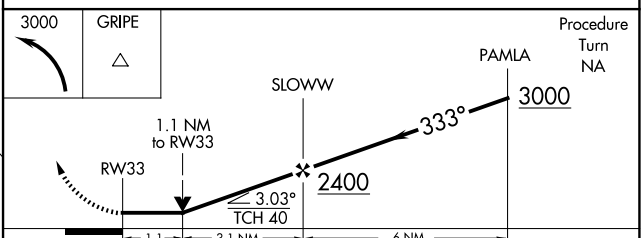
Procedure NA for arrival at GRAYM on V14 northbound.



ELEV 1009	<b>D</b>	TDZE 999
-----------	----------	----------



- TDZ/CL Rwy 11
- REIL Rws 15, 29 and 33
- HIRL Rwy 11-29
- MIRL Rwy 15-33



CATEGORY	A	B	C	D
LNAV MDA	1480-1	482 (500-1)	1480 - $1\frac{3}{8}$	482 (500-1 $\frac{3}{8}$ )
<b>C</b> CIRCLING	1560-1 551 (600-1)	1720-1 711 (800-1)	2000-3 991 (1000-3)	

NE-1, 23 JAN 2025 to 20 FEB 2025

NE-1, 23 JAN 2025 to 20 FEB 2025