

VOR/DME GDM <b>116.95</b> Chan 116 (Y)	APP CRS <b>347°</b>	Rwy Idg TDZE Apt Elev	<b>5000</b> <b>998</b> <b>1009</b>
--	------------------------	-----------------------------	--

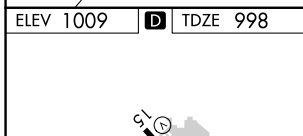
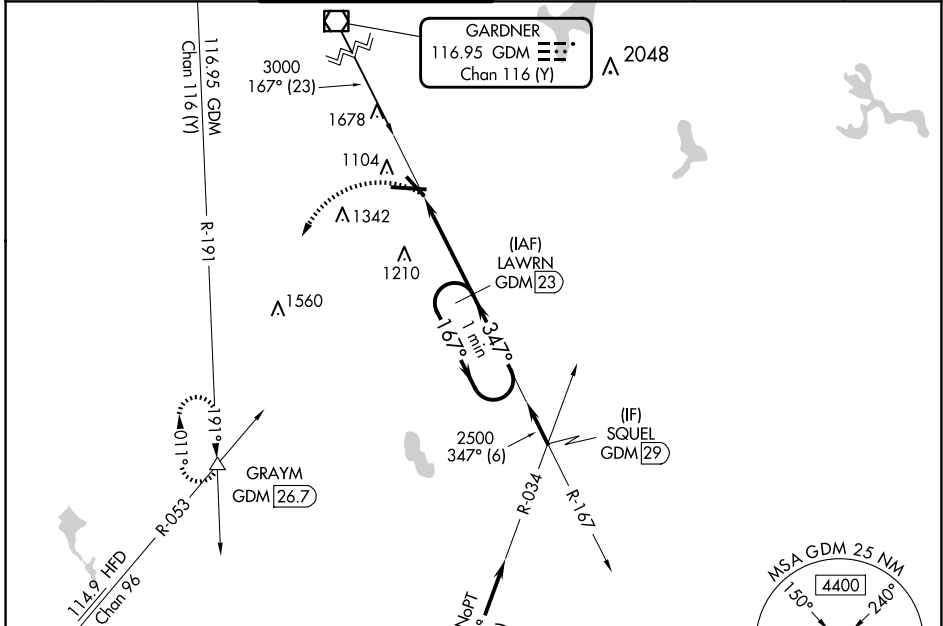
# VOR/DME RWY 33

WORCESTER RGNL (ORH)

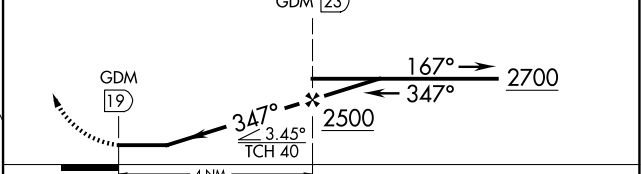
**⚠** When local altimeter setting not received, use Bedford altimeter setting and increase all MDAs 200 feet; increase S-33 Cat C/D visibility ½ SM and Circling Cat B ¼ SM.

**MISSED APPROACH:** Climbing left turn to 3000 on heading 240° and GDM VOR/DME R-191 to GRAYM INT/GDM 26.7 DME and hold.

ATIS <b>126.55</b>	BRADLEY APP CON <b>119.0 327.1</b>	WORCESTER TOWER ★ <b>120.5 (CTAF) 263.0</b>	GND CON <b>123.85</b>	CLNC DEL <b>128.65</b>	CLNC DEL <b>119.0</b> (When twr closed)	UNICOM <b>122.95</b>
-----------------------	---------------------------------------	--	--------------------------	---------------------------	---	-------------------------



3000 hdg 240° GDM R-191 GRAYM VGSI and descent angles not coincident (VGSI Angle 3.00/TCH 40). LAWRN GDM 23 One Minute Holding Pattern



ELEV 1009 **D** TDZE 998

TDZ/CL Rwy 11  
REIL Rwys 15, 29 and 33  
HIRL Rwy 11-29  
MIRL Rwy 15-33

CATEGORY	A	B	C	D
S-33	1520-1	522 (600-1)	1520-1½	522 (600-1½)
<b>C</b> CIRCLING	1560-1 551 (600-1)	1720-1 711 (800-1)	2000-3	991 (1000-3)

NE-1, 23 JAN 2025 to 20 FEB 2025

NE-1, 23 JAN 2025 to 20 FEB 2025