

VORTAC MQP 117.7 Chan 124	APP CRS 309°	Rwy Idg 5596 TDZE 974 Apt Elev 974
---	------------------------	---

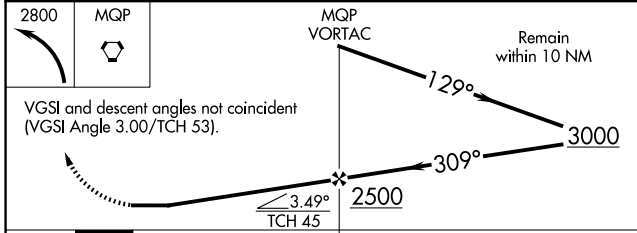
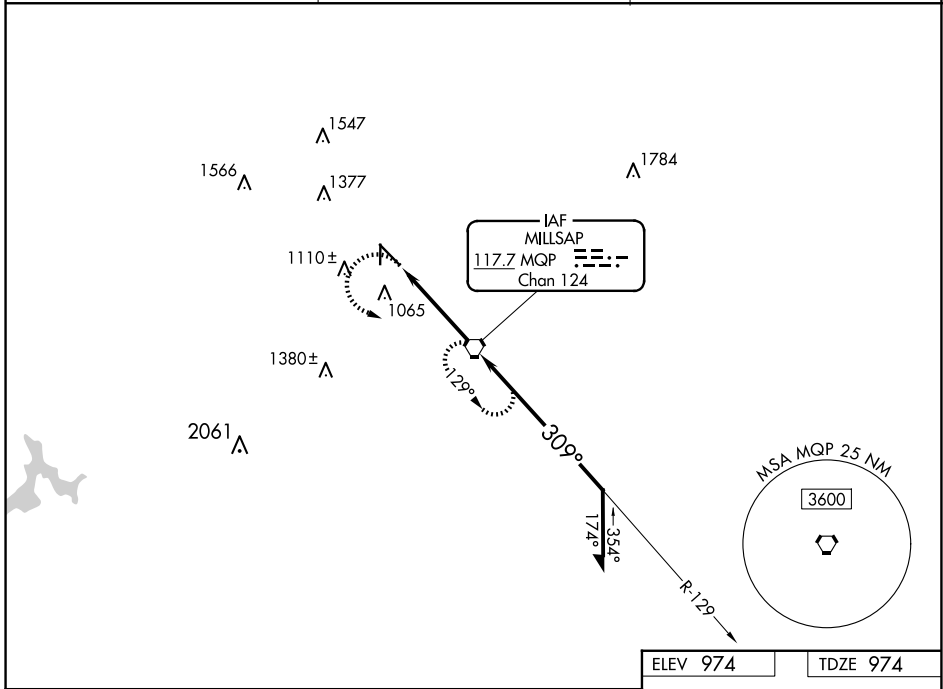
VOR RWY 31

MINERAL WELLS RGNL (MWL)

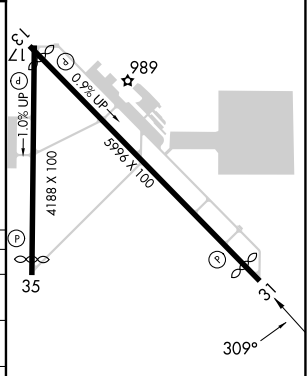
NA Circling to Rwy 17 NA at night. When local altimeter setting not received, use Fort Worth Meacham altimeter setting.

MISSED APPROACH: Climbing left turn to 2800 direct MQP VORTAC and hold.

ASOS 135.075	FORT WORTH CENTER 127.0 360.6	UNICOM 122.725 (CTAF) 0
------------------------	---	-----------------------------------



ELEV 974	TDZE 974
----------	----------



CATEGORY	A	B	C	D
S-31	1340-1 366 (400-1)			1340-1¼ 366 (400-1¼)
C CIRCLING	1420-1 446 (500-1)	1460-1 486 (500-1)	1740-2¼ 766 (800-2¼)	1740-2½ 766 (800-2½)
FORT WORTH MEACHAM INTL ALTIMETER SETTING MINIMUMS				
S-31	1460-1	486 (500-1)	1460-1¼ 486 (500-1¼)	1460-1½ 486 (500-1½)
C CIRCLING	1540-1 566 (600-1)	1560-1 586 (600-1)	1820-2½ 846 (900-2½)	1820-2¾ 846 (900-2¾)

MIRL Rwy 13-31 and 17-35 0
FAF to MAP 4 NM
Knots 60 90 120 150 180
Min:Sec 4:00 2:40 2:00 1:36 1:20

SC-2, 23 JAN 2025 to 20 FEB 2025

SC-2, 23 JAN 2025 to 20 FEB 2025