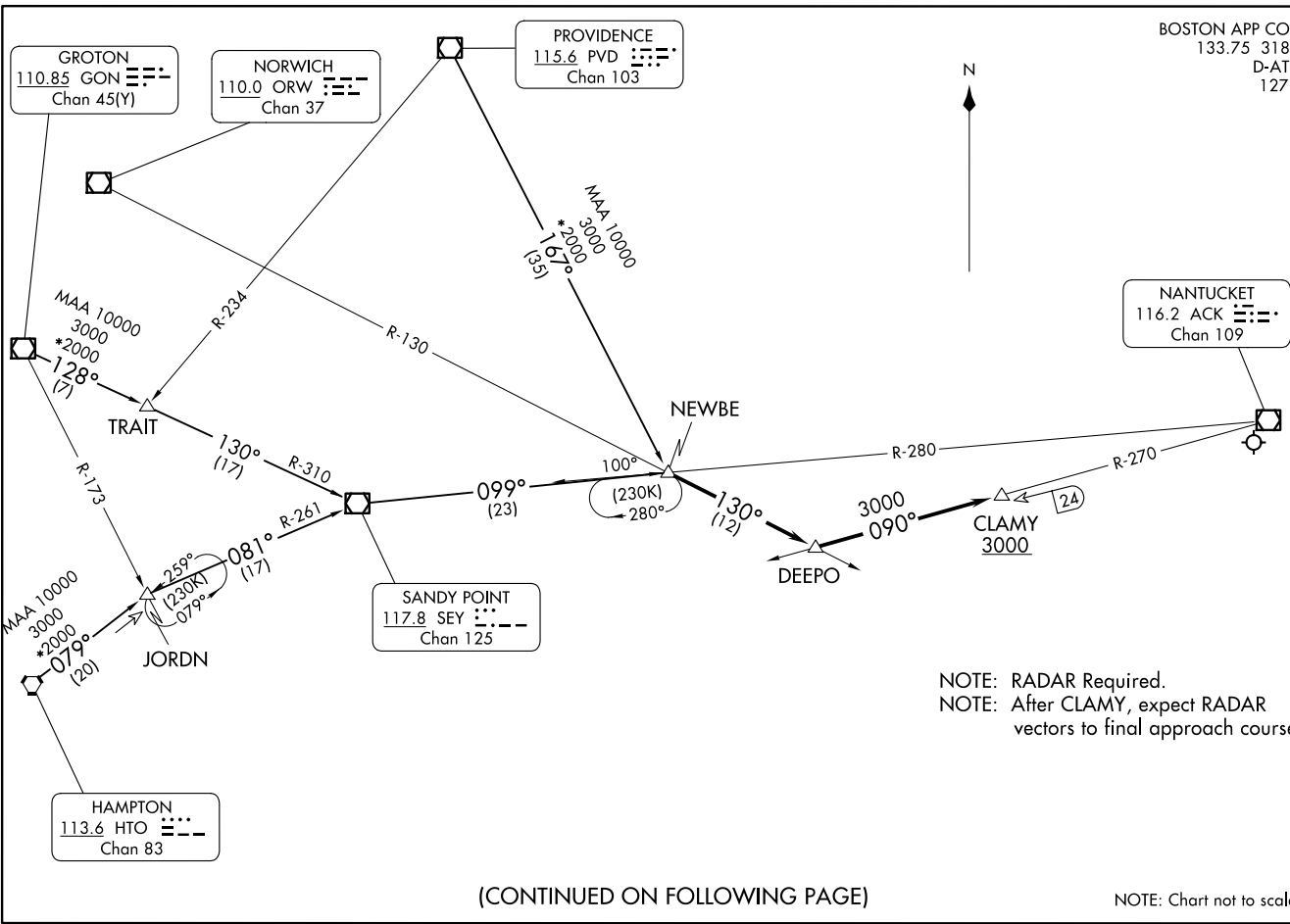


BOSTON APP CON  
133.75 318.1  
D-ATIS  
127.5

(NEWBE, NEWBE3) 24277  
NEWBE THREE ARRIVAL

AL-659 (FAA)

NANTUCKET MEML (ACK)  
NANTUCKET, MASSACHUSETTS



NOTE: RADAR Required.  
NOTE: After CLAMY, expect RADAR vectors to final approach course.

(CONTINUED ON FOLLOWING PAGE)

NOTE: Chart not to scale.

NEWBE THREE ARRIVAL  
(NEWBE, NEWBE3) 120CT17

NANTUCKET, MASSACHUSETTS  
NANTUCKET MEML (ACK)

### ARRIVAL DESCRIPTION

GROTON TRANSITION (GON.NEWBE3): From over GON VOR/DME on GON R-128 to TRAIT INT, then on SEY R-310 to SEY VOR/DME, then on SEY R-099 to NEWBE. Thence . . . .

HAMPTON TRANSITION (HTO.NEWBE3): From over HTO VORTAC on HTO R-079 to JORDN INT, then on SEY R-261 to SEY VOR/DME, then on SEY R-099 to NEWBE. Thence . . . .

PROVIDENCE TRANSITION (PVD.NEWBE3): From over PVD VOR/DME on PVD R-167 to NEWBE. Thence . . . .

. . . . From over NEWBE on ORW R-130 to DEEPO, then on ACK R-270 to cross CLAMY at or above 3000. After CLAMY, expect vectors to the final approach course.

NE-1, 23 JAN 2025 to 20 FEB 2025

NE-1, 23 JAN 2025 to 20 FEB 2025