

HOOVER EIGHT DEPARTURE
(HOOVR8.LAS) 08SEP22

HOOVER EIGHT DEPARTURE
(HOOVR8.LAS) 24277

LAS VEGAS DEP CON
125.9 307.25 (Rwys 19L/R, 26L/R)
133.95 353.7 (Rwys 1L/R, 8L/R)
CLNC DEL
118.0
CPDLC
GND CON
121.1 270.8 E of 1R/19L
121.9 254.3 W of 1L/19R
LAS VEGAS TOWER
118.75 257.8 (Rwys 1L/R, 19L/R)
119.9 257.8 (Rwys 8L/R, 26L/R)

**TOP ALTITUDE:
ASSIGNED BY ATC**

RADAR and DME required

DOVE CREEK
114.6 DVC
Chan 93

MILFORD
112.1 MLF
Chan 58

MORMON MESA
113.1 MMM
Chan 78

PAGE
116.45 PGA
Chan 111(Y)

LAS VEGAS
116.9 LAS
Chan 116

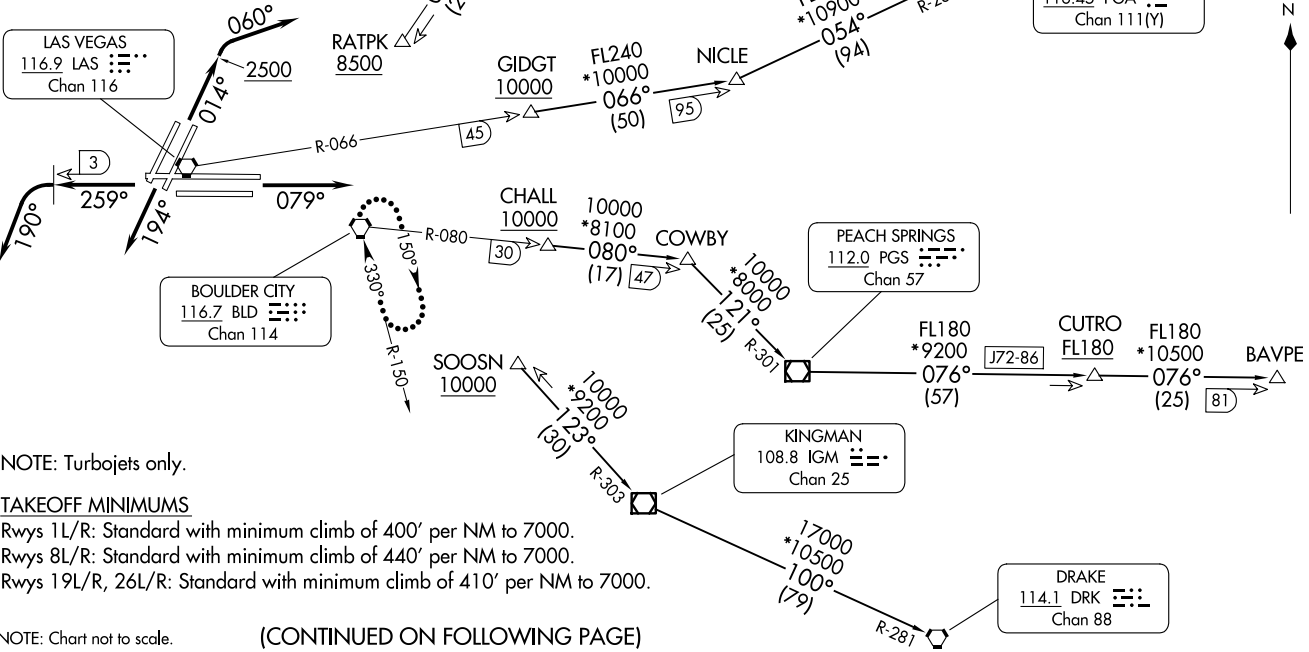
BOULDER CITY
116.7 BLD
Chan 114

CHALL
10000
*8100
080°
(17) (47)

PEACH SPRINGS
112.0 PGS
Chan 57

KINGMAN
108.8 IGM
Chan 25

DRAKE
114.1 DRK
Chan 88



NOTE: Turbojets only.

TAKEOFF MINIMUMS

Rwys 1L/R: Standard with minimum climb of 400' per NM to 7000.
Rwys 8L/R: Standard with minimum climb of 440' per NM to 7000.
Rwys 19L/R, 26L/R: Standard with minimum climb of 410' per NM to 7000.

NOTE: Chart not to scale.

(CONTINUED ON FOLLOWING PAGE)

LAS VEGAS, NEVADA
HARRY REID INTL (LAS)

HARRY REID INTL (LAS)
LAS VEGAS, NEVADA

AL-662 (FAA)



DEPARTURE ROUTE DESCRIPTION

TAKEOFF RUNWAYS 1L/R: Climb on heading 014° to 2500, then climbing right turn heading 060°, thence. . . .

TAKEOFF RUNWAYS 8L/R: Climb on heading 079°, thence. . . .

TAKEOFF RUNWAYS 19L/R: Climb on heading 194°, thence. . . .

TAKEOFF RUNWAYS 26L/R: Climb on heading 259° until LAS VORTAC 3 DME, then climbing left turn heading 190°, thence. . . .

. . . .RADAR vectors to transition or assigned route. Maintain ATC assigned altitude, expect clearance to filed altitude two minutes after departure.

LOST COMMUNICATIONS: If no contact with ATC upon reaching 7000, proceed direct BLD VORTAC then climb in BLD VORTAC holding pattern to appropriate MEA for route of flight.

BAVPE TRANSITION (HOOVR8.BAVPE): From over CHALL on BLD R-080 and PGS R-301 to PGS VOR/DME, then on PGS R-076 to BAVPE.

DOVE CREEK TRANSITION (HOOVR8.DVC): From over GIDGT on LAS R-066 and PGA R-234 to PGA VOR/DME, then on PGA R-053 and DVC R-233 to DVC VORTAC.

DRAKE TRANSITION (HOOVR8.DRK): From over SOOSN on IGM R-303 to IGM VOR/DME, then on IGM R-100 and DRK R-281 to DRK VORTAC.

MILFORD TRANSITION (HOOVR8.MLF): From over RATPK on MMM R-199 to MMM VORTAC, then on MMM R-016 and MLF R-197 to MLF VORTAC.

SW-4, 23 JAN 2025 to 20 FEB 2025

SW-4, 23 JAN 2025 to 20 FEB 2025