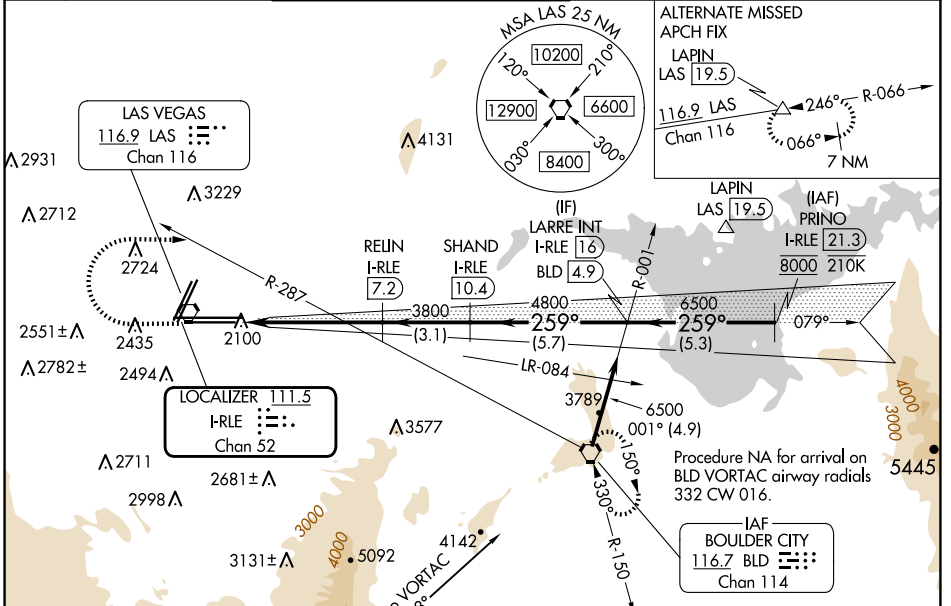


LOC/DME I-RLE	APP CRS	Rwy Idg	26L	26R
111.5	259°	TDZE	10526	12638
Chan 52		Apt Elev	2069	2067
			2181	2181

ILS Z or LOC Z RWY 26L

HARRY REID INTL (LAS)

DME required.		MALS F Rwy 26L	MALS Rwy 26R	MISSED APPROACH: Climb to 3200 then climbing right turn to 6000 heading 080° and on BLD R-287 to BLD VORTAC and hold, continue climb-in-hold to 6000.		
<p>▼ Inop table does not apply to S-ILS 26L and Sidestep 26R. For inop ALS, increase S-LOC 26L Cat C/D/E visibility to 1 3/8 SM.</p>						
D-ATIS	LAS VEGAS APP CON	LAS VEGAS TOWER		GND CON	CLNC DEL	CPDLC
132.4	125.025 379.15 (West) 119.775 282.2 (East)	118.75 257.8 (Rwy 1L/19R, 1R/19L) 119.9 257.8 (Rwy 8L/26R, 8R/26L)		121.1 270.8 E of 1R/19L 121.9 254.3 W of 1L/19R	118.0	



3200	6000	BLD R-287	VGSI and ILS glidepath not coincident (VGSI Angle 3.00/TCH 84).		
			SHAND I-RLE 10.4	LARRE INT I-RLE 16	PRINO I-RLE 21.3
			RELIN I-RLE 7.2	BLD 4.9	8000
			I-RLE 3.1	3800	259°
			I-RLE 1.9	3800	6500
			1.2 NM	4.1 NM	3.1 NM
			5.7 NM	5.3 NM	
CATEGORY	A	B	C	D	E
S-ILS 26L	2269-3/4 200 (100-3/4)				
S-LOC 26L	2520-3/4 451 (400-3/4)		2520-1 451 (400-1)		
SIDESTEP 26R	2560-1 493 (400-1)		2560-1 1/2 493 (400-1 1/2)		2560-2 493 (400-2)
CIRCLING	3020-1 1/4 839 (900-1 1/4)		3060-1 1/4 879 (900-1 1/4)		3100-2 3/4 919 (1000-2 3/4)
	3540-3		1359 (1400-3)		

ELEV 2181	D	TDZE 26L 2069	TDZE 26R 2067
-----------	----------	---------------	---------------

Procedure NA for arrival on BLD VORTAC airway radials 332 CW 016.

IAF BOULDER CITY 116.7 BLD Chan 114

TWR 2433

MIRL Rwy 1R-19L
REIL Rws 1R, 8R, 19L and 19R
HIRL Rws 1L-19R, 8L-26R and 8R-26L

SW-4, 23 JAN 2025 to 20 FEB 2025

SW-4, 23 JAN 2025 to 20 FEB 2025