

RNAV 1 - DME/DME/IRU or GPS.  
RADAR required for non-GPS equipped aircraft.

**TOP ALTITUDE:  
14000**

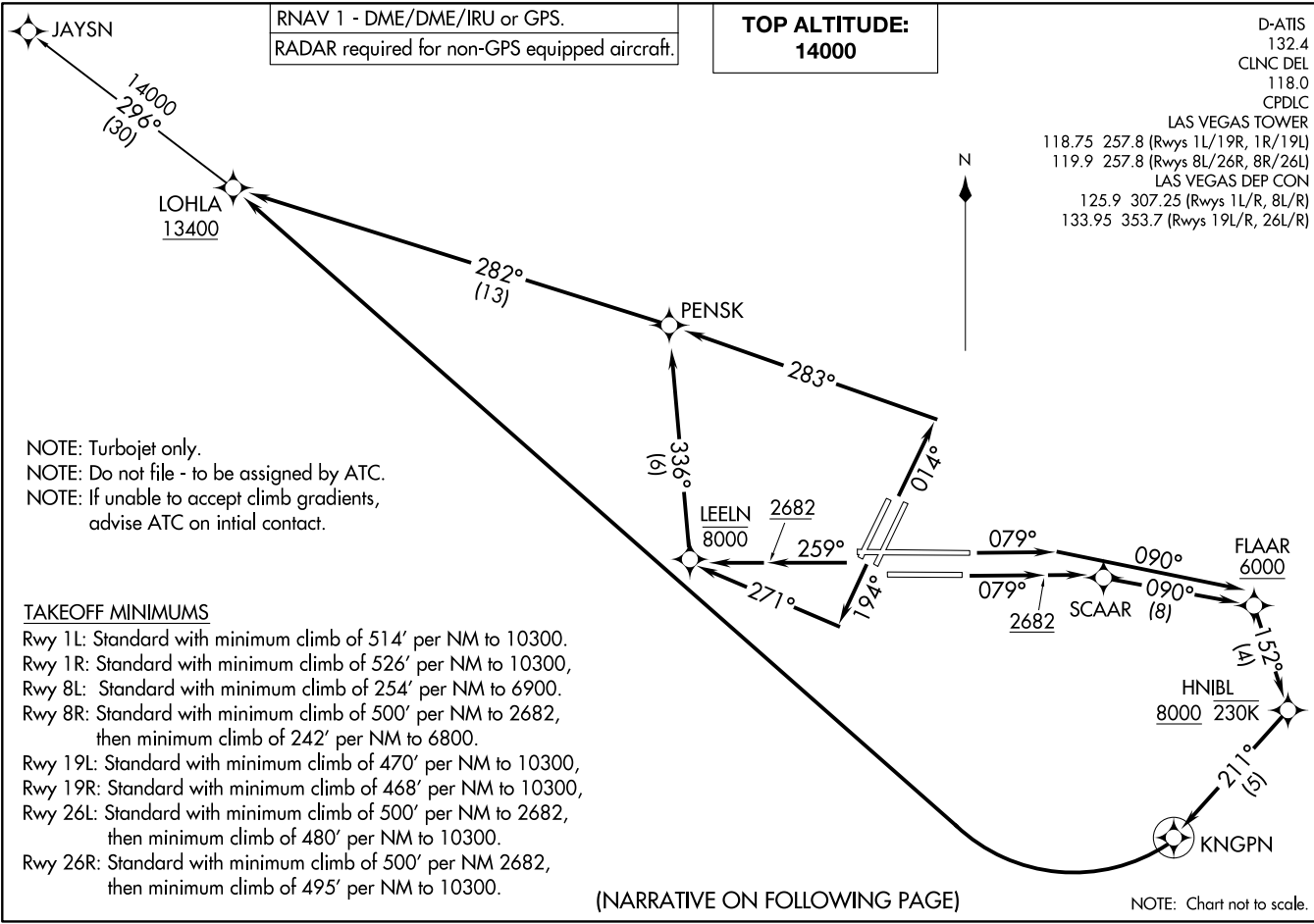
D-ATIS 132.4  
CLNC DEL 118.0  
CPDLC  
LAS VEGAS TOWER 118.75 257.8 (Rwys 1L/19R, 1R/19L)  
119.9 257.8 (Rwys 8L/26R, 8R/26L)  
LAS VEGAS DEP CON 125.9 307.25 (Rwys 1L/R, 8L/R)  
133.95 353.7 (Rwys 19L/R, 26L/R)

LOHLA THREE DEPARTURE (RNAV)  
(LOHLA3.LOHLA) 03NOV22

(LOHLA3.LOHLA) 22307  
LOHLA THREE DEPARTURE (RNAV)

AL-652 (FAA)

HARRY REID INTL (LAS)  
LAS VEGAS, NEVADA



NOTE: Turbojet only.  
NOTE: Do not file - to be assigned by ATC.  
NOTE: If unable to accept climb gradients, advise ATC on initial contact.

**TAKEOFF MINIMUMS**

- Rwy 1L: Standard with minimum climb of 514' per NM to 10300.
- Rwy 1R: Standard with minimum climb of 526' per NM to 10300.
- Rwy 8L: Standard with minimum climb of 254' per NM to 6900.
- Rwy 8R: Standard with minimum climb of 500' per NM to 2682, then minimum climb of 242' per NM to 6800.
- Rwy 19L: Standard with minimum climb of 470' per NM to 10300.
- Rwy 19R: Standard with minimum climb of 468' per NM to 10300.
- Rwy 26L: Standard with minimum climb of 500' per NM to 2682, then minimum climb of 480' per NM to 10300.
- Rwy 26R: Standard with minimum climb of 500' per NM 2682, then minimum climb of 495' per NM to 10300.

(NARRATIVE ON FOLLOWING PAGE)

NOTE: Chart not to scale.

LAS VEGAS, NEVADA  
HARRY REID INTL (LAS)



DEPARTURE ROUTE DESCRIPTION

TAKEOFF RUNWAYS 1L/R: Climb on heading 014° to intercept course 283° to PENSK, then on track 282° to cross LOHLA at or above 13400, thence. . . .

TAKEOFF RUNWAY 8L: Climb on heading 079° to intercept course 090° to cross FLAAR at or above 6000, then on track 152° to cross HNIBL at or above 8000 and at or below 230K, then on track 211° to KNGPN, then right turn direct LOHLA at or above 13400, thence. . . .

TAKEOFF RUNWAY 8R: Climb on heading 079° to 2682, then direct SCAAR, then on track 090° to cross FLAAR at or above 6000, then on track 152° to cross HNIBL at or above 8000 and at or below 230K, then on track 211° to KNGPN, then right turn direct LOHLA at or above 13400, thence. . . .

TAKEOFF RUNWAYS 19L/R: Climb on heading 194° to intercept course 271° to LEELN at or below 8000, then on track 336° to PENSK, then on track 282° to cross LOHLA at or above 13400, thence. . . .

TAKEOFF RUNWAYS 26L/R: Climb on heading 259° to 2682, then direct LEELN at or below 8000, then on track 336° to PENSK, then on track 282° to cross LOHLA at or above 13400, thence. . . .

. . . . on (transition), maintain 14000. Expect filed altitude 10 minutes after departure.

JAYSN TRANSITION (LOHLA3.JAYSN)

SW-4, 23 JAN 2025 to 20 FEB 2025

SW-4, 23 JAN 2025 to 20 FEB 2025