

# MCCARRAN SEVEN DEPARTURE

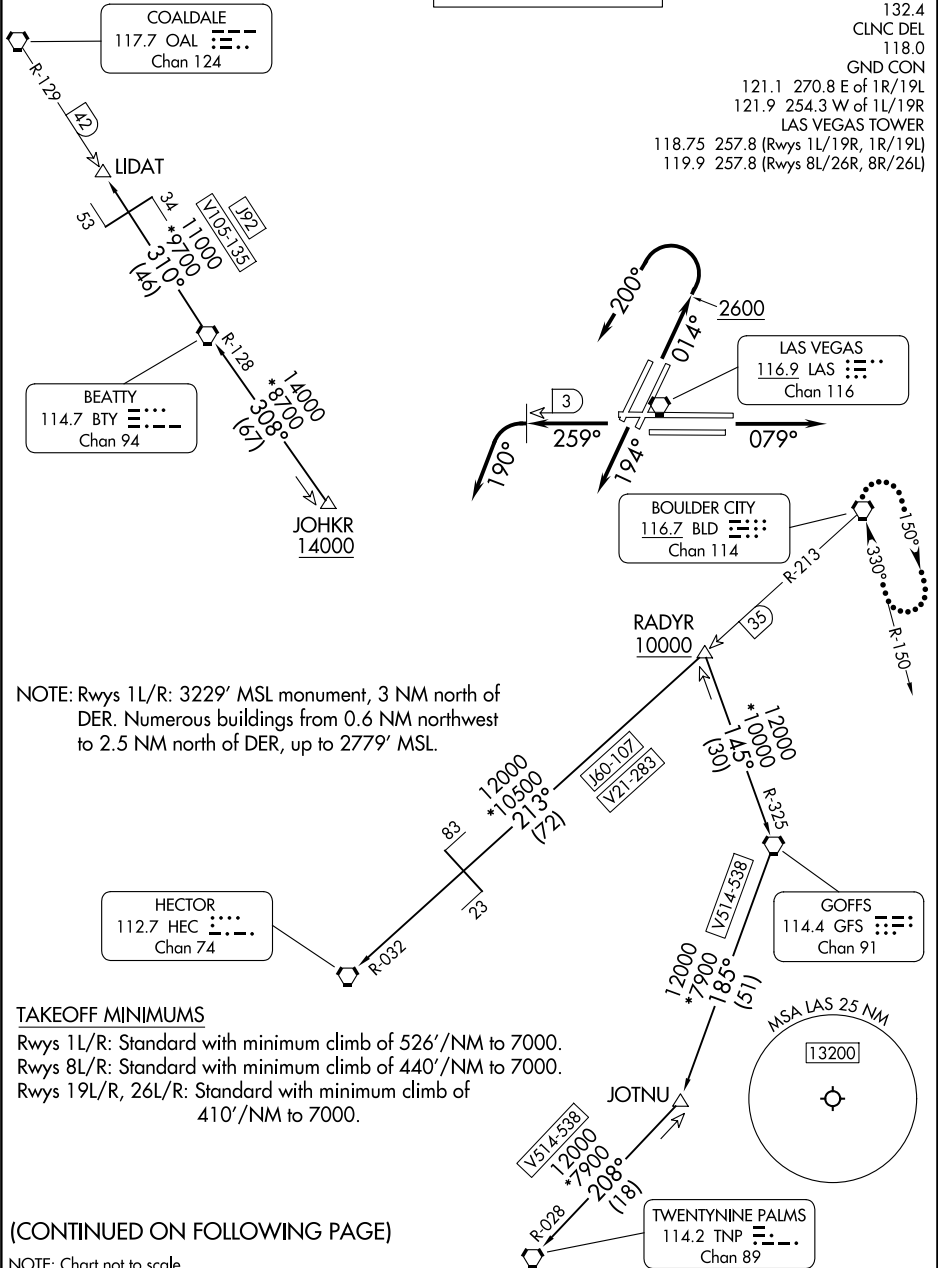
AL-662 (FAA)

HARRY REID INTL (LAS)  
LAS VEGAS, NEVADA

RADAR and DME required.

**TOP ALTITUDE:  
ASSIGNED BY ATC**

LAS VEGAS DEP CON  
125.9 307.25  
D-ATIS  
132.4  
CLNC DEL  
118.0  
GND CON  
121.1 270.8 E of 1R/19L  
121.9 254.3 W of 1L/19R  
LAS VEGAS TOWER  
118.75 257.8 (Rwys 1L/19R, 1R/19L)  
119.9 257.8 (Rwys 8L/26R, 8R/26L)



NOTE: Rwys 1L/R: 3229' MSL monument, 3 NM north of DER. Numerous buildings from 0.6 NM northwest to 2.5 NM north of DER, up to 2779' MSL.

### TAKEOFF MINIMUMS

Rwys 1L/R: Standard with minimum climb of 526'/NM to 7000.  
Rwys 8L/R: Standard with minimum climb of 440'/NM to 7000.  
Rwys 19L/R, 26L/R: Standard with minimum climb of 410'/NM to 7000.

(CONTINUED ON FOLLOWING PAGE)

NOTE: Chart not to scale.

# MCCARRAN SEVEN DEPARTURE

LAS VEGAS, NEVADA  
HARRY REID INTL (LAS)

SW-4, 23 JAN 2025 to 20 FEB 2025

SW-4, 23 JAN 2025 to 20 FEB 2025



DEPARTURE ROUTE DESCRIPTION

TAKEOFF RUNWAYS 1L/R: Climb on heading 014° to 2600, then climbing left turn heading 200°, thence. . . .

TAKEOFF RUNWAYS 8L/R: Climb on heading 079°, thence. . . .

TAKEOFF RUNWAYS 19L/R: Climb on heading 194°, thence. . . .

TAKEOFF RUNWAYS 26L/R: Climb on heading 259° until LAS VORTAC 3 DME, then climbing left turn heading 190°, thence. . . .

. . . .for RADAR vectors to assigned transition or assigned route. Maintain ATC assigned altitude. Expect clearance to filed altitude two minutes after departure.

LOST COMMUNICATIONS: If no contact with ATC upon reaching 7000, proceed direct BLD VORTAC then climb in BLD VORTAC holding pattern to the appropriate MEA for route of flight.

HECTOR TRANSITION (MCCRN7.HEC): From over RADYR on BLD R-213 and HEC R-032 to HEC VORTAC.

LIDAT TRANSITION (MCCRN7.LIDAT): From over JOHKR on BTY R-128 to BTY VORTAC, then on BTY R-310 and OAL R-129 to LIDAT.

TWENTY NINE PALMS TRANSITION (MCCRN7.TNP): From over RAYDR on GFS R-325 to GFS VORTAC, then on GFS R-185 and TNP R-028 to TNP VORTAC.

SW-4, 23 JAN 2025 to 20 FEB 2025

SW-4, 23 JAN 2025 to 20 FEB 2025