

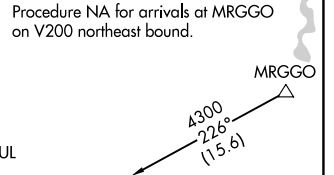
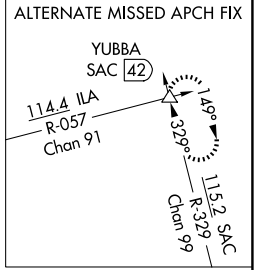
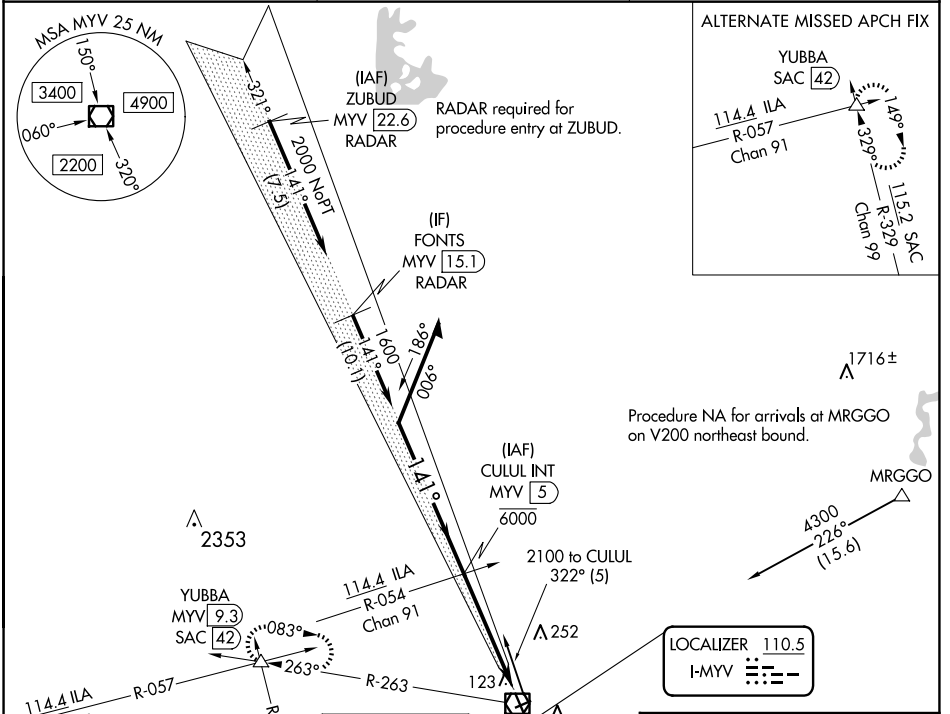
LOC I-MYV 110.5	APP CRS 141°	Rwy ldg 6007 TDZE 64 Apt Elev 64
---------------------------	------------------------	---

ILS or LOC RWY 14

YUBA COUNTY (MYV)

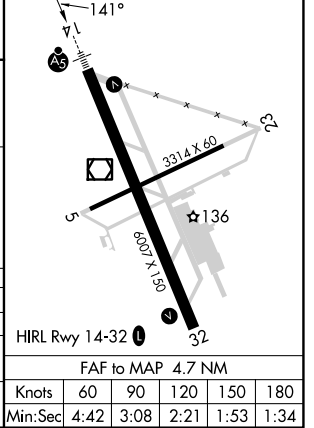
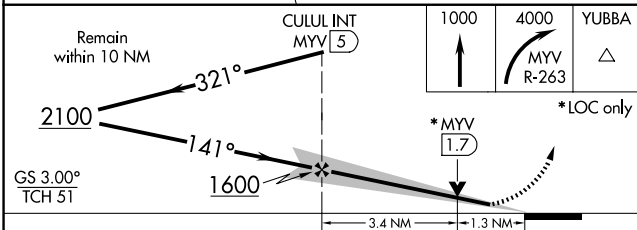
NA Circling Rwy 5, 23 NA at night. Autopilot coupled approach NA below 695.	MALSR 	MISSED APPROACH: Climb to 1000 then climbing right turn to 4000 on MYV VOR/DME R-263 to YUBBA INT/ MYV 9.3 DME and hold, continue climb in hold to 4000.
	ASOS 118.475	

NORCAL APP CON 125.4 259.1	UNICOM 123.05 (CTAF)
--------------------------------------	--------------------------------



LOCALIZER 110.5
I-MYV

ELEV 64	TDZE 64
----------------	----------------



CATEGORY	A	B	C	D
S-ILS 14	264-1/2		200 (200-1/2)	
S-LOC 14	520-1/2	456 (500-1/2)	520-7/8	456 (500-7/8)
CIRCLING	540-1	476 (500-1)	560-1 1/2 496 (500-1 1/2)	620-2 556 (600-2)

FAF to MAP 4.7 NM					
Knots	60	90	120	150	180
Min:Sec	4:42	3:08	2:21	1:53	1:34

SW-2, 23 JAN 2025 to 20 FEB 2025

SW-2, 23 JAN 2025 to 20 FEB 2025