

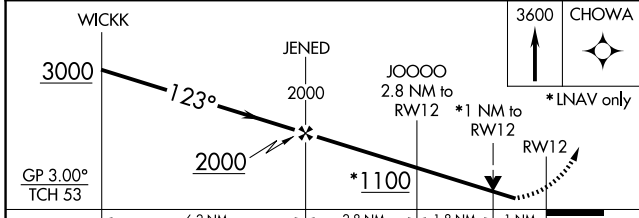
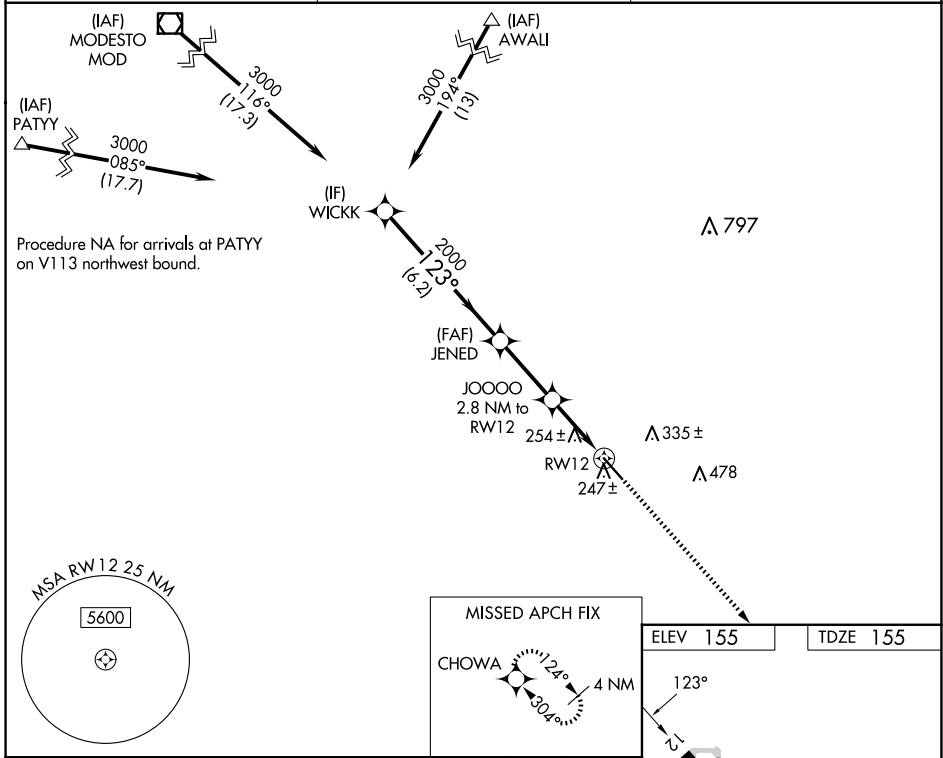
WAAS CH 93923 W12A	APP CRS 123°	Rwy Idg 5914 TDZE 155 Apt Elev 155
--	------------------------	---

RNAV (GPS) RWY 12

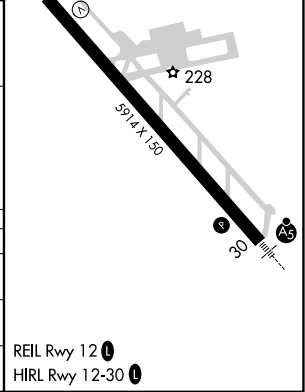
MERCED YOSEMITE RGNL (MCE)

RNP APCH.	MISSED APPROACH: Climb to 3600 direct CHOWA and hold.
<p>▼ Rwy 12 helicopter visibility reduction below 3/4 SM NA. For uncompensated Baro-VNAV systems, LNAV/VNAV NA below -3°C or above 54°C.</p>	

ASOS 132.175	NORCAL APP CON 120.95 269.45	UNICOM 122.7 (CTAF) 0
------------------------	--	---------------------------------



CATEGORY	A	B	C	D
LPV DA		405-3/4	250 (300-3/4)	
LNAV/VNAV DA		434-7/8	279 (300-7/8)	
LNAV MDA		520-1	365 (400-1)	



SW-2, 23 JAN 2025 to 20 FEB 2025

SW-2, 23 JAN 2025 to 20 FEB 2025