

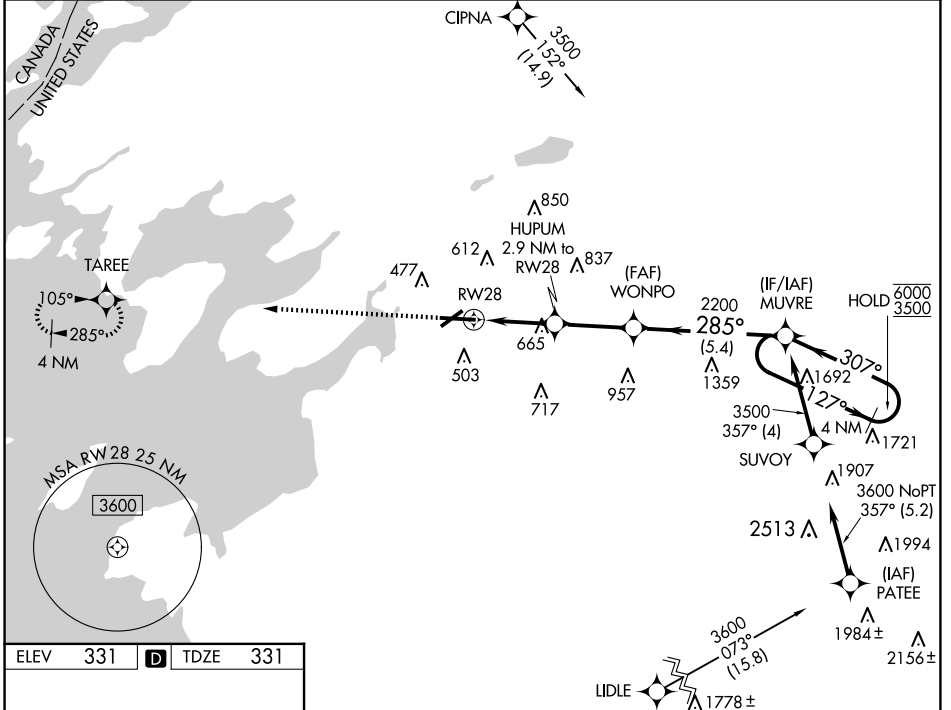
WAAS CH <b>82322</b>	APP CRS <b>285°</b>	Rwy Idg TDZE Apt Elev	<b>7001</b> <b>331</b> <b>331</b>
-------------------------	------------------------	-----------------------------	---

# RNAV (GPS) RWY 28

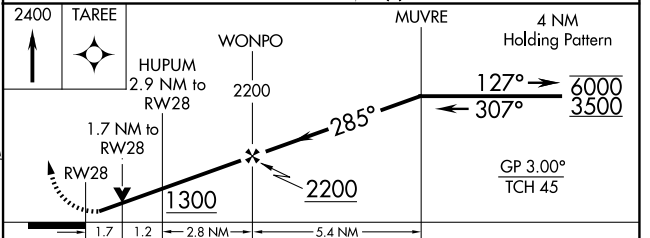
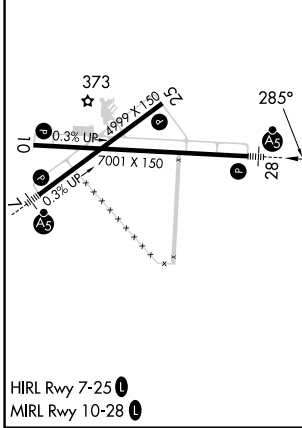
WATERTOWN INTL (ART)

RNP APCH - GPS.				MALSR 	MISSED APPROACH: Climb to 2400 direct TAREE and hold.
▼ Rwy 28 helicopter visibility reduction below 3/4 SM NA. For uncompensated Baro-VNAV systems, LNAV/VNAV NA below -20°C or above 54°C. For inop ALS, increase LNAV Cats A/B visibility to 1 SM. ▲					

ASOS <b>132.325</b>	KGTB ATIS <b>119.525</b>	WHEELER-SACK APP CON <b>124.875 307.125</b>	CLNC DEL <b>120.8</b>	UNICOM <b>123.0 (CTAF)</b>
------------------------	-----------------------------	--	--------------------------	-------------------------------



ELEV 331	<b>D</b>	TDZE 331
----------	----------	----------



CATEGORY	A	B	C	D
LPV DA		531-1/2	200 (200-1/2)	
LNAV/VNAV DA		852-1	521 (600-1)	
LNAV MDA	920-3/4	589 (600-3/4)	920-1 1/4	589 (600-1 1/4)
<b>C</b> CIRCLING	920-1 589 (600-1)	960-1 629 (700-1)	980-1 3/4 649 (700-1 3/4)	1080-2 1/2 749 (800-2 1/2)

NE-2, 23 JAN 2025 to 20 FEB 2025

NE-2, 23 JAN 2025 to 20 FEB 2025