

VORTAC ART 109.8 Chan 35	APP CRS 043°	Rwy Idg 4784 TDZE 319 Apt Elev 331
--	------------------------	---

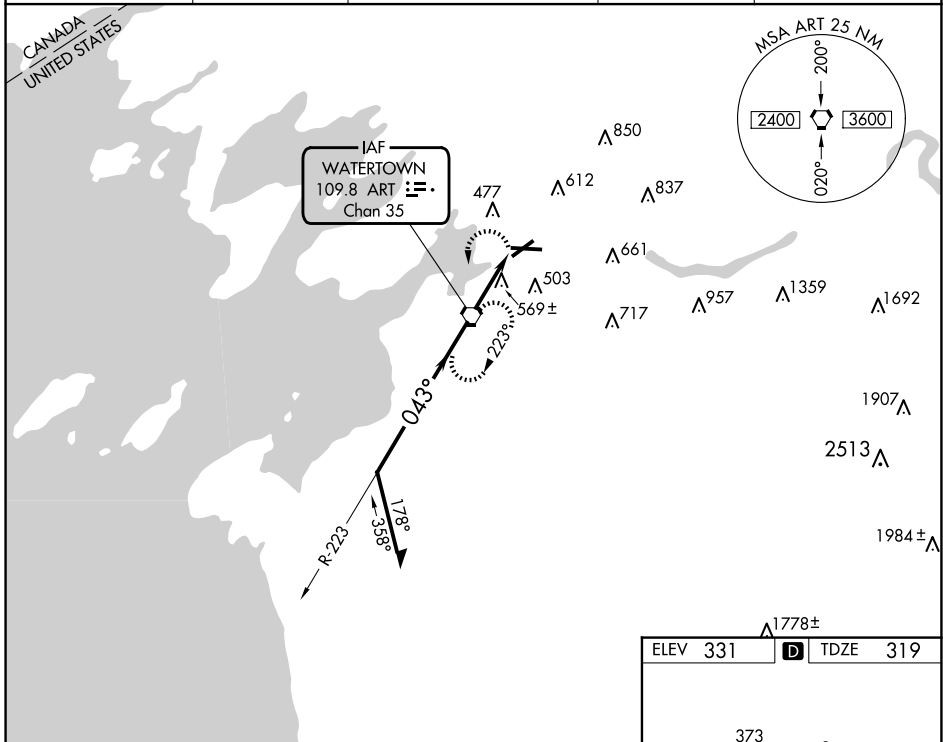
VOR RWY 7

WATERTOWN INTL (ART)

⚠ Inop table does not apply. When local altimeter setting not received, use Fort Drum altimeter setting and increase all MDAs 100 feet and visibility S-7 Cat C/D and Circling Cat D ¼ SM and Circling Cat C ½ SM. VDP NA when using Fort Drum altimeter setting.

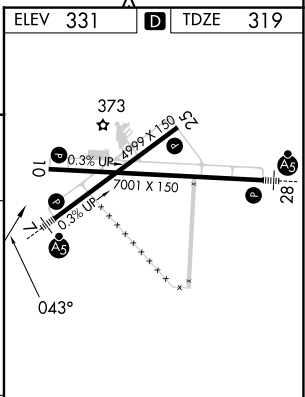
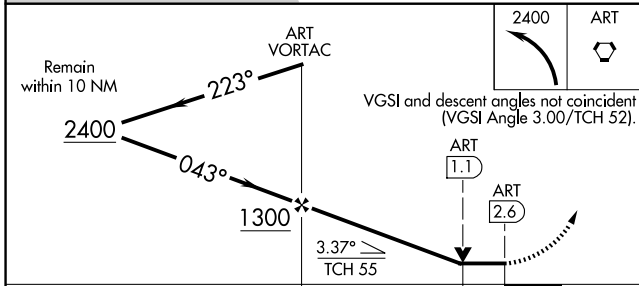
MALS MISSED APPROACH: Climbing left turn to 2400 direct ART VORTAC and hold, continue climb-in-hold to 2400.

ASOS 132.325	KGTB ATIS 119.525	WHEELER-SACK APP CON 124.875 307.125	CLNC DEL 120.8	UNICOM 123.0 (CTAF)
------------------------	-----------------------------	--	--------------------------	-------------------------------



NE-2, 23 JAN 2025 to 20 FEB 2025

NE-2, 23 JAN 2025 to 20 FEB 2025



CATEGORY	A	B	C	D
	880-1	561 (600-1)	880-1½	561 (600-1½)
S-7	880-1	561 (600-1)	880-1½	561 (600-1½)
CIRCLING	960-1	629 (700-1)	980-1¾	1080-2½
			649 (700-1¾)	749 (800-2½)

ELEV 331	TDZE 319
HIRL Rwy 7-25	MIRL Rwy 10-28
FAF to MAP 2.6 NM	
Knots	60 90 120 150 180
Min:Sec	2:36 1:44 1:18 1:02 0:52