

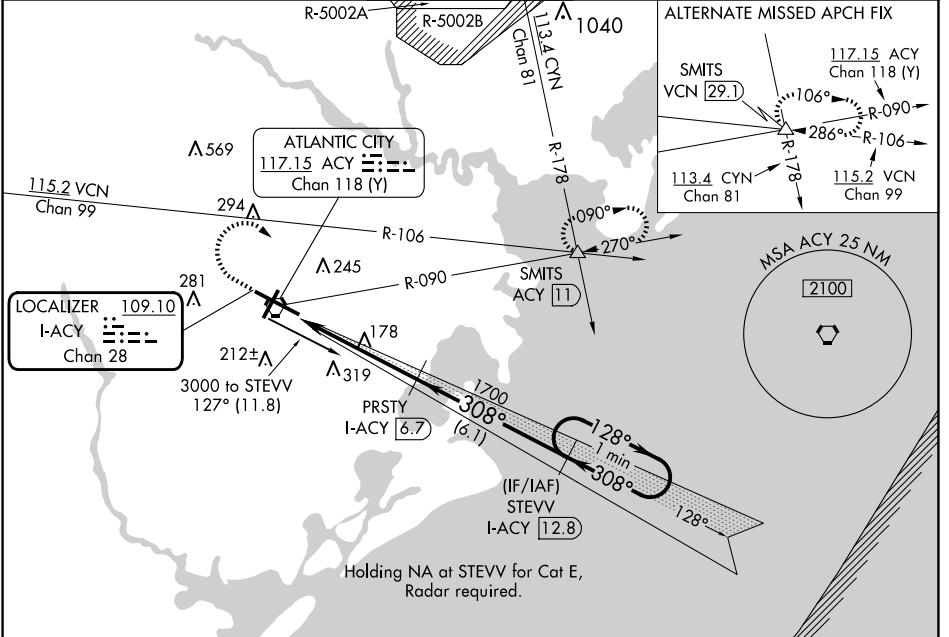
LOC/DME I-ACY 109.10 Chan 28	APP CRS 308°	Rwy Idg TDZE Apt Elev	10001 64 75
---	------------------------	-----------------------------	--

ILS or LOC/DME RWY 31

ATLANTIC CITY INTL (ACY)

MISSED APPROACH: Climb to 500 then climbing right turn to 2000 via heading 130° and via ACY R-090 to SMITS INT/ACY 11 DME and hold.

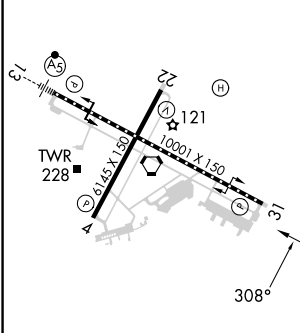
ATIS 125.725 316.15	ATLANTIC CITY APP CON 124.6 327.125	ATLANTIC CITY TOWER 120.3 239.0	GND CON 121.9 284.6	CLNC DEL 127.85 353.775
-------------------------------	---	---	-------------------------------	-----------------------------------



NE-2, 23 JAN 2025 to 20 FEB 2025

NE-2, 23 JAN 2025 to 20 FEB 2025

ELEV 75	D	TDZE 64
---------	----------	---------



TDZ/CL Rwy 13
HIRL Rws 4-22 and 13-31
REIL Rwy 31

DME REQUIRED

500	2000	ACY R-090	SMITS	Use I-ACY DME when on localizer course. VGSI and ILS glidepath not coincident (VGSI Angle 3.00/TCH 69).	One Minute Holding Pattern
↑	hdg 130°				
		PRSTY I-ACY [6.7]	STEVV I-ACY [12.8]		
		I-ACY [1.8]	I-ACY [3]	1700	1700
				308°	128°
				308°	2000
				GS 3.00°	TCH 52
		1.2	3.7 NM	6.1 NM	
CATEGORY	A	B	C	D	E
S-ILS 31	264/40 200 (200-¾)				
S-LOC 31	520/55	456 (500-1)	520/60 456 (500-1½)	520-1½	456 (500-1½)
CIRCLING	540-1 465 (500-1)	600-1 525 (600-1)	620-1½ 545 (600-1½)	640-2 565 (600-2)	760-2½ 685 (700-2½)