

ILS or LOC RWY 14
DODGE CITY RGNL (DDC)

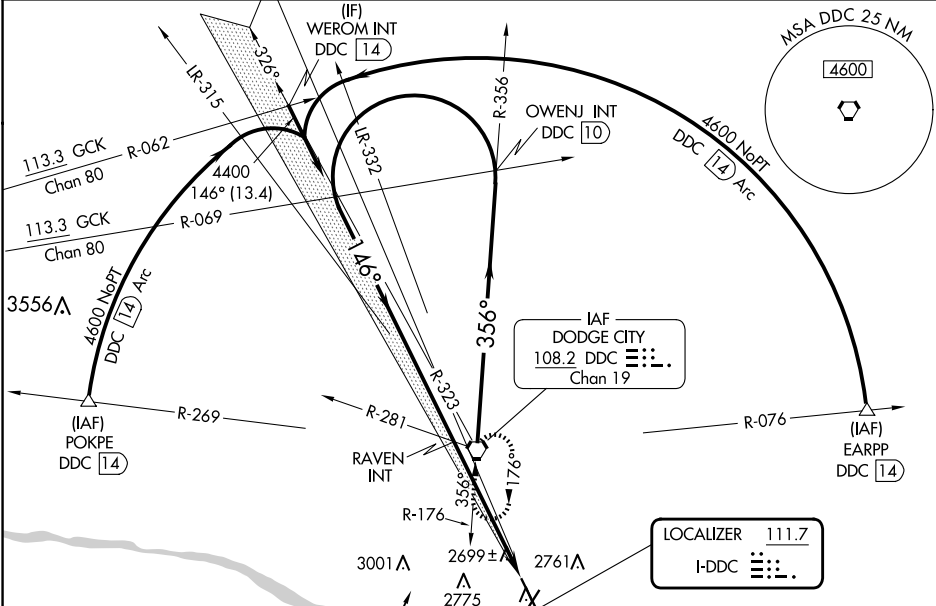
LOC I-DDC 111.7	APP CRS 146°	Rwy ldg TDZE Apt Elev	6329 2586 2596
---------------------------	------------------------	-----------------------------	---

A For inop ALS, increase S-LOC 14 Cat C/D visibility to 1 SM.

MALSR

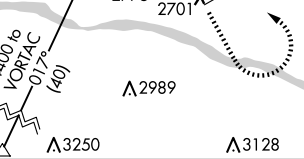
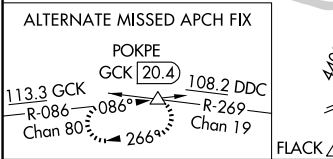
MISSED APPROACH: Climb to 3200 then climbing left turn to 4400 direct DDC VORTAC and hold.

ASOS 118.525	KANSAS CITY CENTER 125.2 285.425	UNICOM 122.7 (CTAF) 1
------------------------	--	--



NC-2, 23 JAN 2025 to 20 FEB 2025

NC-2, 23 JAN 2025 to 20 FEB 2025



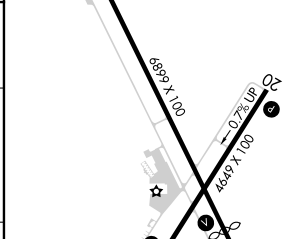
VGSI and ILS glidepath not coincident (VGSI Angle 3.00/TCH 5.5).

Teardrop Left Turn

GS 3.00° TCH 40

3200	4400	DDC

ELEV	2596	TDZE	2586
LOCALIZER	111.7	I-DDC	



CATEGORY	A	B	C	D
S-ILS 14	2786-1/2 200 (200-1/2)			
S-LOC 14	2960-1/2	374 (400-1/2)	2960-5/8	374 (400-5/8)
C CIRCLING	3040-1 444 (500-1)	3080-1 484 (500-1)	3320-2 724 (800-2)	3320-2 1/4 724 (800-2 1/4)

REIL Rwy 32 1	MIRL Rwys 14-32 and 2-20 1				
FAF to MAP 5.5 NM					
Knots	60	90	120	150	180
Min:Sec	5:30	3:40	2:45	2:12	1:50