

WAAS CH <b>99320</b> <b>W27A</b>	APP CRS <b>272°</b>	Rwy Idg <b>5549</b> TDZE <b>34</b> Apt Elev <b>48</b>
--	------------------------	---

# RNAV (GPS) RWY 27

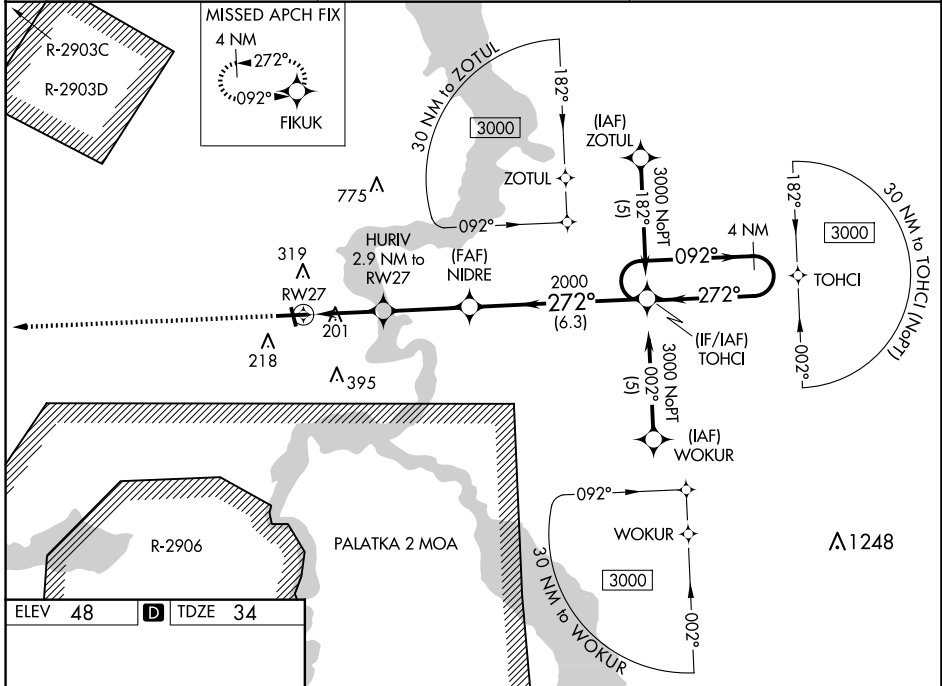
PALATKA MUNI/LT KAY LARKIN FLD (28J)

RNP APCH-GPS.

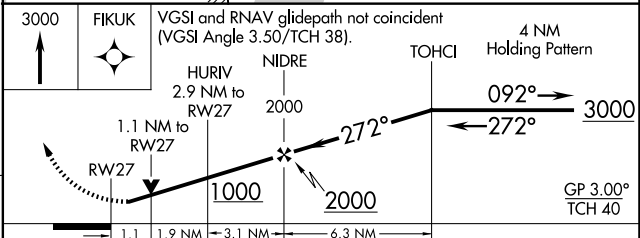
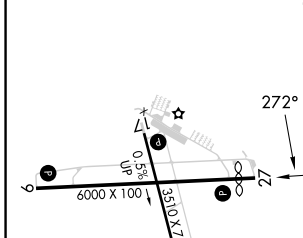
Baro-VNAV NA when using St. Augustine altimeter setting. For uncompensated Baro-VNAV systems, LNAV/VNAV NA below -15°C or above 54°C. Rwy 27 helicopter visibility reduction below ¼ SM NA. When local altimeter setting not received, use St Augustine altimeter setting and increase LPV DA to 419 feet and all visibilities ¼ SM. Increase LNAV/VNAV DA to 582 feet and all visibilities ¼ SM. Increase all MDAs 80 feet and LNAV visibility Cat C/D ¼ SM, and Circling visibility Cat C/D ¼ SM. Circling Rwy 17, 35 NA at night.

MISSED APPROACH: Climb to 3000 direct FIKUK and hold. Continue climb-in-hold to 3000.

AWOS-3 <b>119.925</b>	JACKSONVILLE APP CON <b>118.175 338.25</b>	UNICOM <b>122.8 (CTAF)</b>
--------------------------	---	-------------------------------



ELEV 48	<b>D</b>	TDZE 34
---------	----------	---------



CATEGORY	A	B	C	D
LPV DA		354-7/8	320 (400-7/8)	
LNAV/VNAV DA		517-13/8	483 (500-13/8)	
LNAV MDA	460-1	426 (500-1)	460-1 1/4 426 (500-1 1/4)	460-1 1/4 426 (500-1 1/4)
CIRCLING	620-1	572 (600-1)	700-1 3/4 652 (700-1 3/4)	700-2 652 (700-2)

PALATKA, FLORIDA  
Orig-D 15JUN23

PALATKA MUNI/LT KAY LARKIN FLD (28J)  
29°40'N-81°41'W  
**RNAV (GPS) RWY 27**

SE-3, 23 JAN 2025 to 20 FEB 2025

SE-3, 23 JAN 2025 to 20 FEB 2025