

TAYTR ONE ARRIVAL (RNAV)

AL-683 (FAA)

PROVO, UTAH

SW-4, 23 JAN 2025 to 20 FEB 2025

ARRIVAL ROUTE DESCRIPTION

FRNZY TRANSITION (FRNZY.TAYTR1)

JAMMN TRANSITION (JAMMN.TAYTR1)

KNOLE TRANSITION (KNOLE.TAYTR1)

NEEBO TRANSITION (NEEBO.TAYTR1)

SPANE TRANSITION (SPANE.TAYTR1)

YMONT TRANSITION (YMONT.TAYTR1)

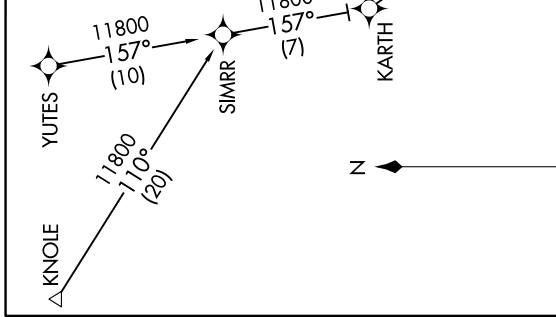
YUTES TRANSITION (YUTES.TAYTR1)

LANDING PVU: From TAYTR, expect ILS or LOC RWY 13 or RNAV (GPS) RWY 13 approach.

LANDING SPK: From TAYTR, expect RNAV (GPS) Y RWY 12 or RNAV (GPS) Z RWY 12 approach.

SALT LAKE CITY APP CON
118.85 233.7
PVU ATIS*
135.175

RNAV 1 - GPS.
RADAR required.



TAYTR ONE ARRIVAL (RNAV)

PROVO, UTAH

NOTE: GPS required.

NOTE: FRNZY Transition, ATC assigned only.

NOTE: Chart not to scale.

SW-4, 23 JAN 2025 to 20 FEB 2025