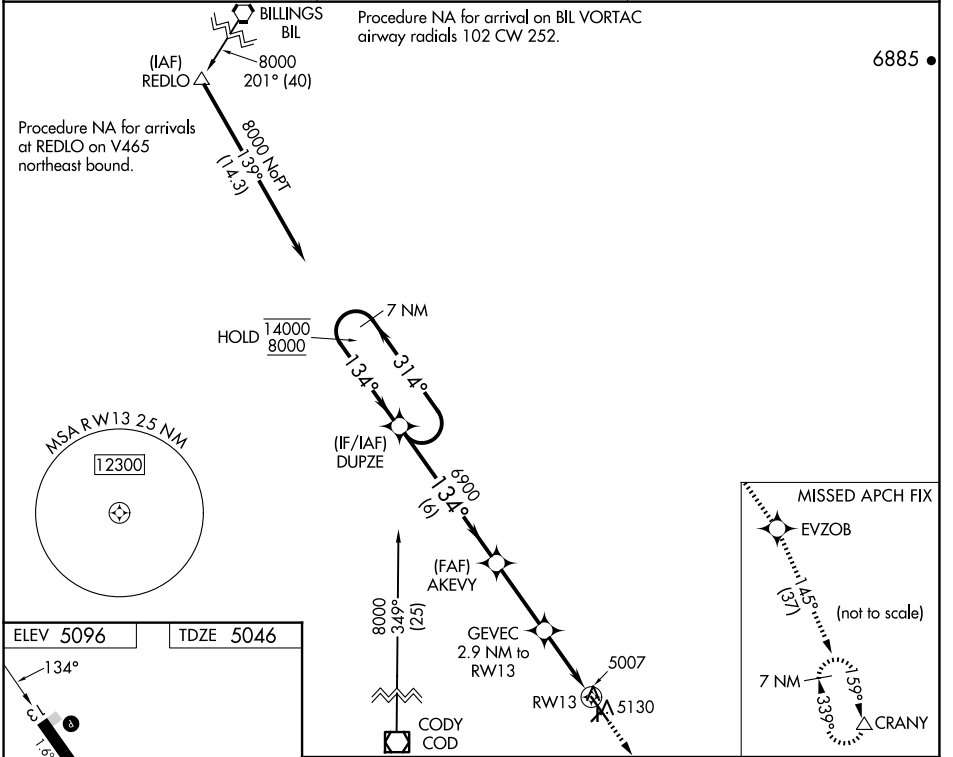


WAAS CH <b>90233</b> <b>W13A</b>	APP CRS <b>134°</b>	Rwy Idg TDZE Apt Elev	<b>6200</b> <b>5046</b> <b>5096</b>
--	------------------------	-----------------------------	---

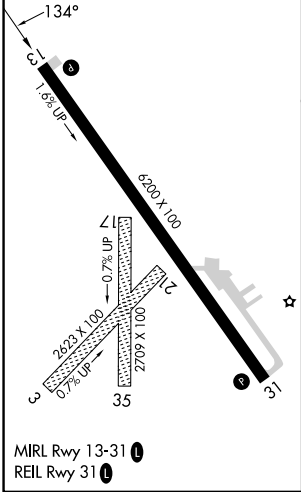
# RNAV (GPS) RWY 13

POWELL MUNI (POY)

RNP APCH.		MISSED APPROACH: Climb to 8500 direct EVZOB and on track 145° to CRANY and hold.	
<p><b>NA</b> Circling NA to Rwys 3, 17, 21 and 35. For uncompensated Baro-VNAV systems, LNAV/VNAV NA below -25°C or above 51°C. Baro-VNAV and VDP NA when using Cody altimeter setting. When local altimeter setting not received, use Cody altimeter setting and increase all DA 54 feet and all MDA 60 feet.</p>			
AWOS-3 <b>119.275</b>	SALT LAKE CENTER <b>127.75 351.9</b>	UNICOM <b>122.7 (CTAF) 0</b>	



ELEV 5096	TDZE 5046
-----------	-----------



7 NM Holding Pattern	DUPZE	AKEYY	8500 EVZOB	tr 145°	CRANY
14000 8000	← 314° 134°	6900 134°	GEVEC 2.9 NM to RWY13	*0.7 NM to RWY13	*LNAV only
GP 3.00° TCH 38		*5940			
	← 6 NM	← 3 NM	← 2.2 NM	← 0.7	
CATEGORY	A	B	C	D	
LPV DA		5296-1	250 (200-1)		
LNAV/VNAV DA		5296-1	250 (200-1)		
LNAV MDA		5300-1	254 (300-1)		
CIRCLING	5500-1 404 (500-1)	5560-1 464 (500-1)	5560-1½ 464 (500-1½)	5660-2 564 (600-2)	

NW-1, 23 JAN 2025 to 20 FEB 2025

NW-1, 23 JAN 2025 to 20 FEB 2025