

LOC/DME I-RDD <b>108.7</b> Chan 24	APP CRS <b>166°</b>	Rwy Idg TDZE Apt Elev	<b>7003</b> <b>505</b> <b>505</b>
--	------------------------	-----------------------------	---

# LOC BC RWY 16

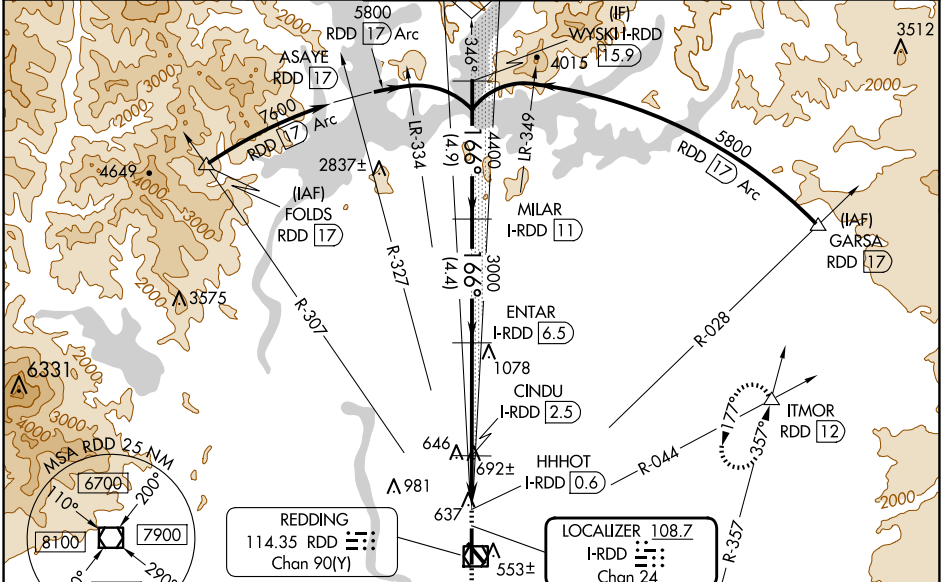
REDDING RGNL (RDD)

DME required.

Rwy 16 helicopter visibility reduction below 3/4 SM NA.

MISSED APPROACH: Climb to 2000 then climbing left turn to 5000 on heading 015° and RDD VOR/DME R-044 to ITMOR INT/RDD 12 DME and hold, continue climb-in-hold to 5000.

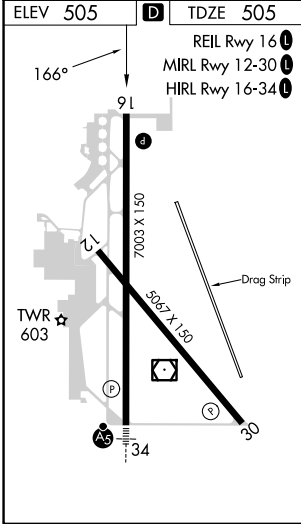
ATIS <b>124.1</b>	OAKLAND CENTER <b>132.2 350.3</b>	REDDING TOWER * <b>119.8(CTAF) 269.25</b>	GND CON <b>121.7</b>	UNICOM <b>122.95</b>
----------------------	--------------------------------------	--	-------------------------	-------------------------



SW-2, 23 JAN 2025 to 20 FEB 2025

SW-2, 23 JAN 2025 to 20 FEB 2025

ELEV 505	<b>D</b>	TDZE 505
----------	----------	----------

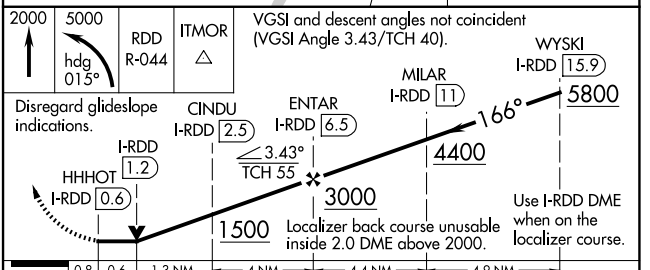


**BACK COURSE**

REDDING 114.35 RDD Chan 90(Y)

LOCALIZER 108.7 I-RDD Chan 24

ALTERNATE MISSED APCH FIX  
REDDING RDD 114.35 Chan 90(Y)



CATEGORY	A	B	C	D
S-16	960-1 455 (500-1)		960-1 3/8 455 (500-1 3/8)	
<b>C</b> CIRCLING	960-1 455 (500-1)	1000-1 495 (500-1)	1120-1 3/4 615 (700-1 3/4)	1340-2 3/4 835 (900-2 3/4)