

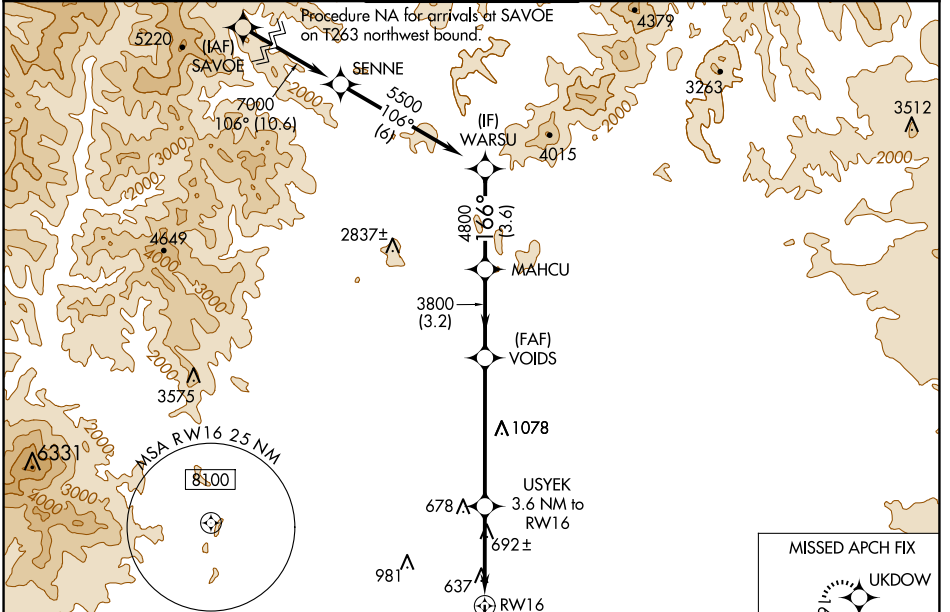
WAAS CH 86443 W16A	APP CRS 166°	Rwy Idg TDZE Apt Elev	7003 505 505
--	------------------------	-----------------------------	---

RNAV (GPS) RWY 16

REDDING RGNL (RDD)

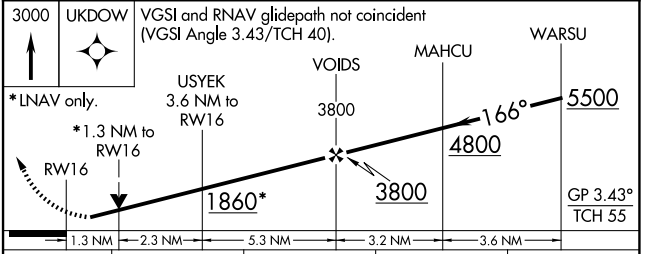
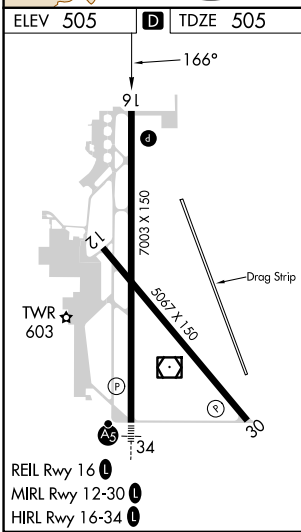
RNP APCH.	MISSED APPROACH: Climb to 3000 direct UKDOW and hold.
<p>▼ Rwy 16 helicopter visibility reduction below 3/4 SM NA. ▲ For uncompensated Baro-VNAV systems, LNAV/VNAV NA below -4°C or above 53°C.</p>	

ATIS 124.1	OAKLAND CENTER 132.2 350.3	REDDING TOWER * 119.8 (CTAF) 0 269.25	GND CON 121.7	UNICOM 122.95
----------------------	--------------------------------------	---	-------------------------	-------------------------



SW-2, 23 JAN 2025 to 20 FEB 2025

SW-2, 23 JAN 2025 to 20 FEB 2025



	3000 UKDOW	VGSi and RNAV glidepath not coincident (VGSi Angle 3.43/TCH 40).		MAHCU	WARSU	
		USYEK 3.6 NM to RW16	VOIDS			
		*1.3 NM to RW16				
					5500	
					GP 3.43° TCH 55	
		1.3 NM	2.3 NM	5.3 NM	3.2 NM	3.6 NM
CATEGORY	A	B	C	D		
LPV DA	755-3/4	250 (300-3/4)	775-7/8	270 (300-7/8)		
LNAV/VNAV DA	892-1 1/8 387 (400-1 1/8)					
LNAV MDA	960-1	455 (500-1)	960-1 3/8	455 (500-1 1/8)		
C CIRCLING	960-1	1000-1	1120-1 3/4	1340-2 3/4		
	455 (500-1)	495 (500-1)	615 (700-1 3/4)	835 (900-2 3/4)		