

| | | | |
|---------------------------|------------------------|--|-------------------------|
| LOC I-RIW 110.5 | APP CRS 284° | Rwy ldg TDZE 8204 5459 | Apt Elev 5516 |
|---------------------------|------------------------|--|-------------------------|

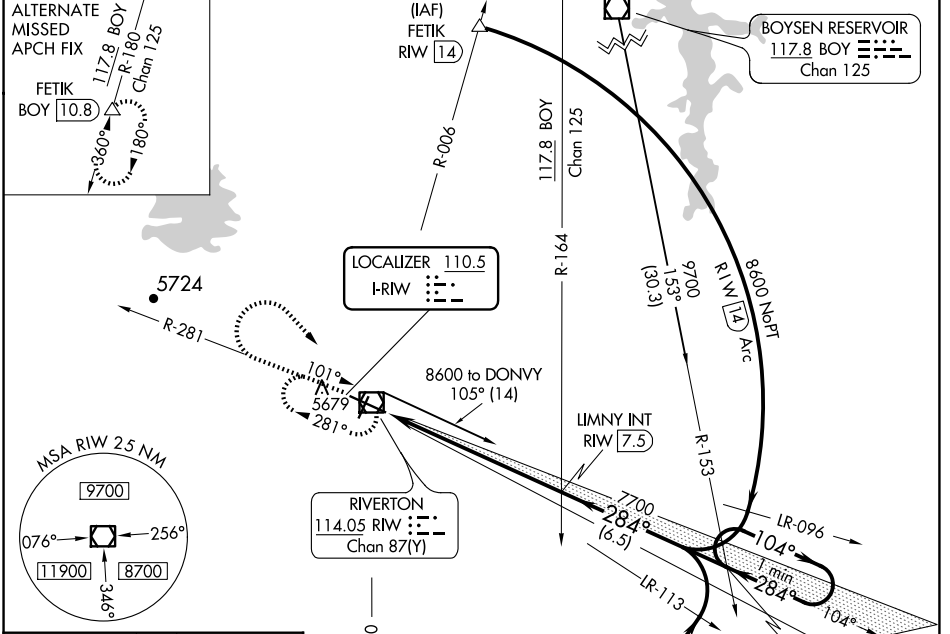
ILS or LOC RWY 28

CENTRAL WYOMING RGNL (RIW)

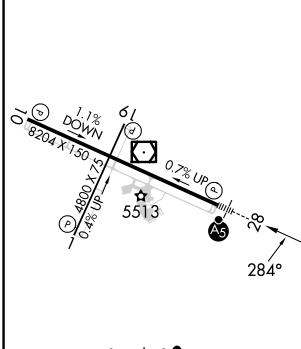
NA When local altimeter setting not received, use Lander altimeter setting: increase DA to 5713 feet; increase all MDA 60 feet and S-LOC 28 Cat C and D visibility ¼ mile. For inop MALSRL, when using Lander altimeter setting, increase S-ILS 28 all Cats visibility to ¾ mile and S-LOC 28 Cat C and D visibility to 1 ½ mile. VDP NA when using Lander altimeter setting.

MALSRL MISSED APPROACH: Climb to 6800 then climbing right turn to 7700 direct RIW VOR/DME and hold, continue climb-in-hold to 7700.

| | | |
|------------------------|---|-------------------------------|
| ASOS 121.425 | SALT LAKE CENTER 133.25 285.6 | UNICOM 122.8 (CTAF) |
|------------------------|---|-------------------------------|



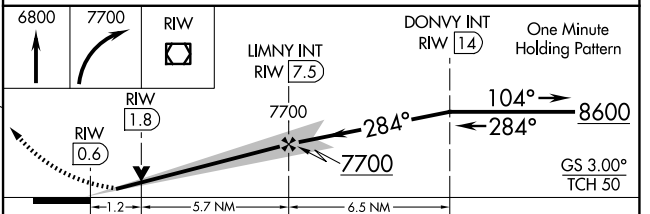
| | | |
|-----------|----------|-----------|
| ELEV 5516 | D | TDZE 5459 |
|-----------|----------|-----------|



REIL Rwy 1, 10 and 19
MIRL Rwy 1-19
HIRL Rwy 10-28

FAF to MAP 6.9 NM

| | | | | | |
|---------|------|------|------|------|------|
| Knots | 60 | 90 | 120 | 150 | 180 |
| Min:Sec | 6:54 | 4:36 | 3:27 | 2:46 | 2:18 |



| CATEGORY | A | B | C | D |
|-------------------|--------------------|---|--|---|
| S-ILS 28 | 5659-½ 200 (200-½) | | | |
| S-LOC 28 | 5880-½ 421 (400-½) | | 5880-¾ 421 (400-¾) | |
| C CIRCLING | 6000-1 484 (500-1) | | 6000-1½ 6120-2 484 (500-1½) 604 (700-2) | |

NW-1, 23 JAN 2025 to 20 FEB 2025

NW-1, 23 JAN 2025 to 20 FEB 2025